

Product datasheet for RC201730L1

gamma Actin (ACTG1) (NM_001614) Human Tagged Lenti ORF Clone

Product data:

Product Type:	Expression Plasmids
Product Name:	gamma Actin (ACTG1) (NM_001614) Human Tagged Lenti ORF Clone
Tag:	Myc-DDK
Symbol:	gamma Actin
Synonyms:	ACT; ACTG; DFNA20; DFNA26; HEL-176
Mammalian Cell Selection:	None
Vector:	pLenti-C-Myc-DDK (PS100064)
E. coli Selection:	Chloramphenicol (34 ug/mL)
ORF Nucleotide Sequence:	The ORF insert of this clone is exactly the same as(RC201730).
Restriction Sites:	SgfI-MluI
Cloning Scheme:	

Cloning sites used for ORF Shuttling:



* The last codon before the Stop codon of the ORF.

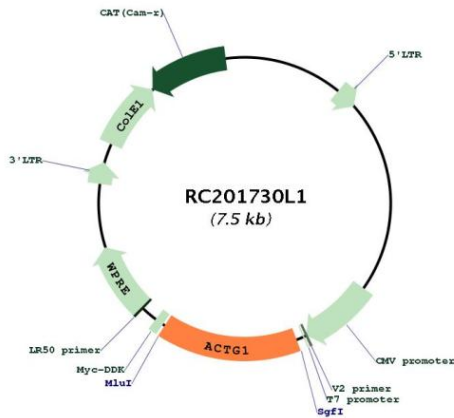
ACCN:	NM_001614
ORF Size:	1125 bp



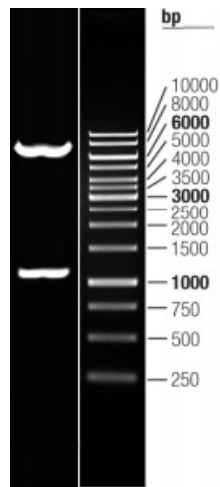
[View online »](#)

OTI Disclaimer:	The molecular sequence of this clone aligns with the gene accession number as a point of reference only. However, individual transcript sequences of the same gene can differ through naturally occurring variations (e.g. polymorphisms), each with its own valid existence. This clone is substantially in agreement with the reference, but a complete review of all prevailing variants is recommended prior to use. More info
OTI Annotation:	This clone was engineered to express the complete ORF with an expression tag. Expression varies depending on the nature of the gene.
Components:	The ORF clone is ion-exchange column purified and shipped in a 2D barcoded Matrix tube containing 10ug of transfection-ready, dried plasmid DNA (reconstitute with 100 ul of water).
Reconstitution Method:	<ol style="list-style-type: none">1. Centrifuge at 5,000xg for 5min.2. Carefully open the tube and add 100ul of sterile water to dissolve the DNA.3. Close the tube and incubate for 10 minutes at room temperature.4. Briefly vortex the tube and then do a quick spin (less than 5000xg) to concentrate the liquid at the bottom.5. Store the suspended plasmid at -20°C. The DNA is stable for at least one year from date of shipping when stored at -20°C.
RefSeq:	NM_001614.2
RefSeq Size:	2004 bp
RefSeq ORF:	1128 bp
Locus ID:	71
UniProt ID:	P63261
Cytogenetics:	17q25.3
Domains:	ACTIN
Protein Pathways:	Adherens junction, Arrhythmogenic right ventricular cardiomyopathy (ARVC), Dilated cardiomyopathy, Focal adhesion, Hypertrophic cardiomyopathy (HCM), Leukocyte transendothelial migration, Pathogenic Escherichia coli infection, Regulation of actin cytoskeleton, Tight junction, Vibrio cholerae infection, Viral myocarditis
MW:	41.8 kDa
Gene Summary:	Actins are highly conserved proteins that are involved in various types of cell motility and in maintenance of the cytoskeleton. Three main groups of actin isoforms have been identified in vertebrate animals: alpha, beta, and gamma. The alpha actins are found in muscle tissues and are a major constituent of the contractile apparatus. The beta and gamma actins co-exist in most cell types as components of the cytoskeleton and as mediators of internal cell motility. Actin gamma 1, encoded by this gene, is a cytoplasmic actin found in all cell types. Mutations in this gene are associated with DFNA20/26, a subtype of autosomal dominant non-syndromic sensorineural progressive hearing loss and also with Baraitser-Winter syndrome. Alternative splicing results in multiple transcript variants. [provided by RefSeq, Jul 2017]

Product images:



Circular map for RC201730L1



Double digestion of RC201730L1 using SgfI and MluI