

## Product datasheet for RC201721

### AVPI1 (NM\_021732) Human Tagged ORF Clone

#### Product data:

**Product Type:** Expression Plasmids  
**Product Name:** AVPI1 (NM\_021732) Human Tagged ORF Clone  
**Tag:** Myc-DDK  
**Symbol:** AVPI1  
**Synonyms:** PP5395; VIP32; VIT32  
**Mammalian Cell Selection:** Neomycin  
**Vector:** pCMV6-Entry (PS100001)  
**E. coli Selection:** Kanamycin (25 ug/mL)  
**ORF Nucleotide Sequence:** >RC201721 ORF sequence  
Red=Cloning site Blue=ORF Green=Tags(s)

TTTTGTAATACGACTCACTATAGGGCGCCGGGAATTCGTCGACTGGATCCGGTACCGAGGAGATCTGCC  
GCC**CGATCGCC**

ATGGGTACCCAGCCTCGGTGGTCAGTGAGCCACCCCTTGGCAGGCCCGATTGAGGCCGGGGCCGCA  
AGCAGGCCTCAGCCAACATCTTCCAGGACGCCGAGCTGCTGCAGATCCAAGGCCTGTTTCAACGCAGCGG  
GGACCAGCTGGCCGAGGAACGGGCACAGATCATCTGGGAATGTGCAGGGGACCACCGTGTGGCTGAGGCC  
CTCAAGAGGCTGCGCAGGAAGAGGCCCAAGGCAGAAACCCCTGGGCCACTCGTACACCACTGCAGCC  
GCCTCAGAATCCTGGAGCCCCTCTGCACTGGCCAACCCACAGAGTGCCACAGAGACAGCCTCCAGTGA  
GCAGTATCTGCACTCTAGGAAGAAAAGTGCCAGGATCCGCCGGAAGTGGAGGAAGTCAGGCCCCACAAGC  
TACCTCCACCAGATCAGACAC

**ACGCGT**ACGCGGCCGCTCGAGCAGAACTCATCTCAGAAGAGGATCTGGCAGCAAATGATATCCTGGATT  
ACAAGGATGACGACGATAAGGTTTAA

**Protein Sequence:** >RC201721 protein sequence  
Red=Cloning site Green=Tags(s)

MGTPASVYSEPPWQAPIEARGRKQASANIFQDAELLQIQGLFQRSGDQLAEERAQIIWECAGDHRVAEA  
LKRLRRKRPPRQKPLGHSLHHC SRLRILEPHSALANPQSATETASSEQYLHSRKK SARIRRNWRKSGPTS  
YLHQIRH

**TR**TRPLEQKLI SEEDLAANDILDYKDDDDKV

**Chromatograms:** [https://cdn.origene.com/chromatograms/mk6018\\_c05.zip](https://cdn.origene.com/chromatograms/mk6018_c05.zip)



[View online »](#)

Restriction Sites: SgfI-MluI

Cloning Scheme:



ACCN: NM\_021732

ORF Size: 441 bp

OTI Disclaimer: The molecular sequence of this clone aligns with the gene accession number as a point of reference only. However, individual transcript sequences of the same gene can differ through naturally occurring variations (e.g. polymorphisms), each with its own valid existence. This clone is substantially in agreement with the reference, but a complete review of all prevailing variants is recommended prior to use. [More info](#)

OTI Annotation: This clone was engineered to express the complete ORF with an expression tag. Expression varies depending on the nature of the gene.

Components: The ORF clone is ion-exchange column purified and shipped in a 2D barcoded Matrix tube containing 10ug of transfection-ready, dried plasmid DNA (reconstitute with 100 ul of water).

Reconstitution Method:

1. Centrifuge at 5,000xg for 5min.
2. Carefully open the tube and add 100ul of sterile water to dissolve the DNA.
3. Close the tube and incubate for 10 minutes at room temperature.
4. Briefly vortex the tube and then do a quick spin (less than 5000xg) to concentrate the liquid at the bottom.
5. Store the suspended plasmid at -20°C. The DNA is stable for at least one year from date of shipping when stored at -20°C.

RefSeq: [NM\\_021732.3](#)

RefSeq Size: 1422 bp

RefSeq ORF: 444 bp

Locus ID: 60370

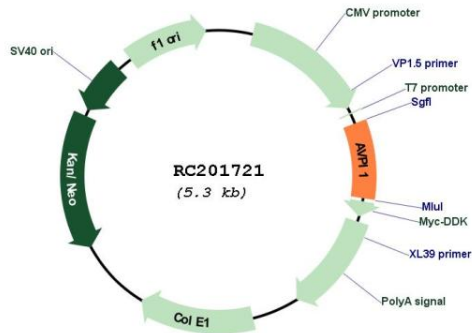
UniProt ID: [Q5T686](#)

Cytogenetics: 10q24.2

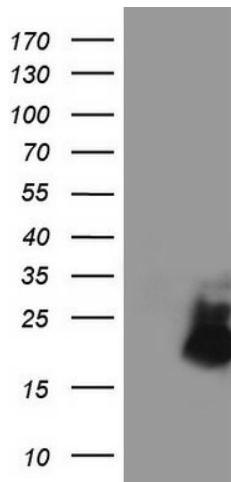
MW: 16.8 kDa

Gene Summary: May be involved in MAP kinase activation, epithelial sodium channel (ENaC) down-regulation and cell cycling.[UniProtKB/Swiss-Prot Function]

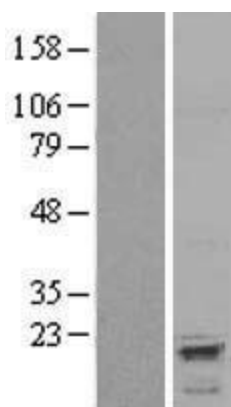
### Product images:



Circular map for RC201721



HEK293T cells were transfected with the pCMV6-ENTRY control (Cat# [PS100001], Left lane) or pCMV6-ENTRY AVPI1 (Cat# RC201721, Right lane) cDNA for 48 hrs and lysed. Equivalent amounts of cell lysates (5 ug per lane) were separated by SDS-PAGE and immunoblotted with anti-AVPI1 (Cat# [TA802924]). Positive lysates [LY402873] (100ug) and [LC402873] (20ug) can be purchased separately from OriGene.



Western blot validation of overexpression lysate (Cat# [LY402873]) using anti-DDK antibody (Cat# [TA50011-100]). Left: Cell lysates from untransfected HEK293T cells; Right: Cell lysates from HEK293T cells transfected with RC201721 using transfection reagent MegaTran 2.0 (Cat# [TT210002]).