

Product datasheet for RC201717

SLC25A3 (NM_213611) Human Tagged ORF Clone

Product data:

Product Type: Expression Plasmids
Product Name: SLC25A3 (NM_213611) Human Tagged ORF Clone
Tag: Myc-DDK
Symbol: SLC25A3
Synonyms: OK/SW-cl.48; PHC; PTP
Mammalian Cell Selection: Neomycin
Vector: pCMV6-Entry (PS100001)
E. coli Selection: Kanamycin (25 ug/mL)
ORF Nucleotide Sequence: >RC201717 ORF sequence
 Red=Cloning site Blue=ORF Green=Tags(s)

TTTTGTAATACGACTCACTATAGGGCGGCCGGAATTCGTCGACTGGATCCGGTACCGAGGAGATCTGCC
 GCC**CGGATCGCC**

ATGTTCTCGTCCGTGGCGCACCTGGCGGGCGAACCCCTTCAACACGCCACATCTGCAGCTGGTGCACG
 ATGGTCTCGGGGACCTCCGCAGCAGCTCCCAGGGCCACGGGCCAGCCCGCCGCTCGCAACCTGGC
 AGCCGCCCGCGTGAAGAGTACAGTTGTGAATTTGGCTCCGCGAAGTATTATGCACTGTGTGGCTTTGGT
 GGGGTCTTAAGTTGTGGTCTGACACACACTGCTGTGGTCCCTGGATTTAGTGAATGCCGATGCAGG
 TGGACCCCAAAAGTACAAGGGCATATTTAACGGATTCTCAGTTACACTTAAAGAGGATGGTGTTCGTGG
 TTTGGCTAAAGGATGGGCTCCGACTTTCCTTGGCTACTCCATGCAGGGACTCTGCAAGTTTGGCTTTTAT
 GAAGTCTTTAAAGTCTTGTATAGCAATATGCTTGGAGAGGAGAATACTTATCTCTGGCGCACATCACTAT
 ATTTGGCTGCCTCTGCCAGTGTGAATCTTTGCTGACATTGCCCTGGCTCCTATGGAAGCTGCTAAGGT
 TCGAATTCAAACCCAGCCAGGTTATGCCAACACTTTGAGGGATGCAGCTCCCAAAATGTATAAGGAAGAA
 GGCCTAAAAGCATTCTACAAGGGGGTGTCTCTCTGGATGAGACAGATACCATACCCATGATGAAGT
 TCGCCTGCTTTGAACGACTGTTGAAGCACTGTACAAGTTTGTGGTTCCTAAGCCCCGAGTGAATGTT
 AAAGCCAGAGCAGCTGGTTGTAACATTTGTAGCAGGTTACATAGCTGGAGTCTTTTGTGCAATTGTTTCT
 CACCTGCTGATTCTGTGGTATCTGTGTTGAATAAAGAAAAAGGTAGCAGTCTCTCTGGTCCTCAAGA
 GACTTGGATTTAAAGGTGTATGGAAGGGACTGTTTGCCTGATCATCATGATTGGTACCCTGACTGCAT
 ACAGTGGTTTATCTATGACTCCGTGAAGGTCTACTTCAGACTTCTCGCCCTCTCCACCCGAGATGCCA
 GAGTCTCTGAAGAAGAAGCTTGGTTAACTCAG

ACGCGTACGCGGCCGCTCGAGCAGAACTCATCTCAGAAGAGGATCTGGCAGCAATGATATCCTGGATT
 ACAAGGATGACGACGATAAGGTTTAA



[View online »](#)

Reconstitution Method:

1. Centrifuge at 5,000xg for 5min.
2. Carefully open the tube and add 100ul of sterile water to dissolve the DNA.
3. Close the tube and incubate for 10 minutes at room temperature.
4. Briefly vortex the tube and then do a quick spin (less than 5000xg) to concentrate the liquid at the bottom.
5. Store the suspended plasmid at -20°C. The DNA is stable for at least one year from date of shipping when stored at -20°C.

RefSeq: [NM_213611.3](#)

RefSeq Size: 1919 bp

RefSeq ORF: 1086 bp

Locus ID: 5250

UniProt ID: [Q00325](#)

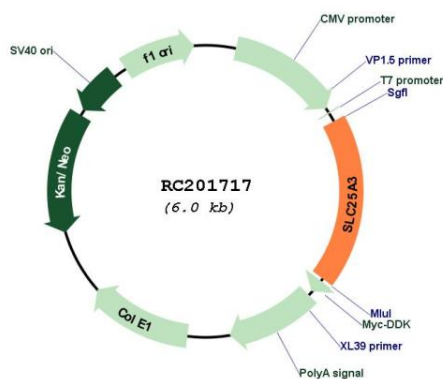
Cytogenetics: 12q23.1

Protein Families: Transmembrane

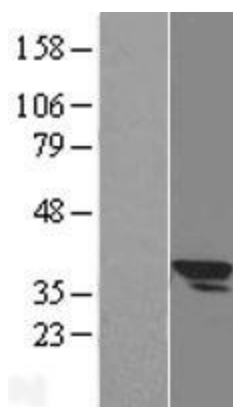
MW: 40 kDa

Gene Summary: The protein encoded by this gene catalyzes the transport of phosphate into the mitochondrial matrix, either by proton cotransport or in exchange for hydroxyl ions. The protein contains three related segments arranged in tandem which are related to those found in other characterized members of the mitochondrial carrier family. Both the N-terminal and C-terminal regions of this protein protrude toward the cytosol. Multiple alternatively spliced transcript variants have been isolated. [provided by RefSeq, Jul 2008]

Product images:



Circular map for RC201717



Western blot validation of overexpression lysate (Cat# [LY403888]) using anti-DDK antibody (Cat# [TA50011-100]). Left: Cell lysates from untransfected HEK293T cells; Right: Cell lysates from HEK293T cells transfected with RC201717 using transfection reagent MegaTran 2.0 (Cat# [TT210002]).