

Product datasheet for **RC201716**

ASB8 (NM_024095) Human Tagged ORF Clone

Product data:

Product Type:	Expression Plasmids
Product Name:	ASB8 (NM_024095) Human Tagged ORF Clone
Tag:	Myc-DDK
Symbol:	ASB8
Synonyms:	PP14212
Mammalian Cell Selection:	Neomycin
Vector:	pCMV6-Entry (PS100001)
E. coli Selection:	Kanamycin (25 ug/mL)
ORF Nucleotide Sequence:	>RC201716 ORF sequence Red=Cloning site Blue=ORF Green=Tags(s)

TTTTGTAATACGACTCACTATAGGGCGGCCGGAATTCGTCGACTGGATCCGGTACCGAGGAGATCTGCC
GCC**CGCATCGCC**

ATGAGTTCAGTATGTGGTATATTATGCAGAGCATTAGAGCAAATACTCTCTCCGAGCGCTTAATCC
GAACAATTGCTGCCATCCGTTCCCTCCACATGATAATGTAGAGGACCTCATCAGAGGGGAGCAGATGT
GAACTGCACTCATGGCACACTGAAGCCCTTGCCTGTGCCTGTATGGTGTGAGATGCTGACTGTGTGGAG
TTACTTCTGGAAAAGGAGCCGAGGTGAATGCCCTGGATGGGTATAACCGAACAGCCCTCCACTATGCAG
CAGAGAAAAGATGAGGCTTGTGTGGAGGTCCTATTGGAGTATGGTGCAAACCCCAATGCTTTGGATGGCAA
CAGAGATACCCCACTTCACTGGGCAGCCTTAAGAACAATGCTGAGTGTGTGCGGGCTCTCTAGAGAGC
GGGGCCTCTGTCAATGCCCTGGATTACAACAATGATACACCGCTCAGCTGGGCTGCCATGAAGGGAATC
TTGAGAGTGTGAGCATCCTTCTGGATTATGGCGCAGAGGTGAGATCATCAACCTAATAGGCCAGACACC
CATCTCCCGCCTGGTGGCTCTGCTAGTCAGGGGACTTGGAAACAGAGAAAAGAGGACTCTTGCTTTGAGCTC
CTCCACAGAGCTGTTGGACACTTTGAATTGAGGAAAAATGGCACCATGCCACGAGAGGTGGCCAGAGACC
CGCAGCTATGTGAAAACTGACTGTTCTGTGCTCAGCTCCAGGAAGCTCTAAAACTCGCTCGCTATGC
CGTGCCCGTAGCCTGGGACTCCAGTATCTCCCGATGCAGTGAAGGGCCTTCCACTGCCAGCTTCTTTG
AAGGAATACCTGTTACTTTTAGAA

ACGCGTACGCGGCCGCTCGAGCAGAAACTCATCTCAGAAGAGGATCTGGCAGCAAATGATATCCTGGATT
ACAAGGATGACGACGATAAGGTTAA



[View online »](#)

Protein Sequence: >RC201716 protein sequence
Red=Cloning site Green=Tags(s)

MSSSMWYIMQSIQSKYSLSERLIRTIAAIRSFPHDNVEDLIRGGADVNCTHGLKPLHCACMVSDADCVE
 LLLLEKGAEVNLDGYNRTALHYAAEKDEACVEVLLLEYGANPNALDGNRDTPLHWAAFKNNACVRALLES
 GASVNALDYNNDTPLSWAAMKGNLESVSIILLDYGAEVRVINLIGQTPISRLVALLVRGLGTEKEDSCFEL
 LHRAVGHFELRKNGTMPREVARDPQLCEKLTVLCSAPGTLKTLARYAVRRSLGLQYLPDAVKGLPLPASL
 KEYLLLLLE

TRTRPLEQKLISEEDLAANDILDYKDDDDKV

Chromatograms: https://cdn.origene.com/chromatograms/mk6541_e05.zip

Restriction Sites: SgfI-MluI

Cloning Scheme:



ACCN: NM_024095

ORF Size: 864 bp

OTI Disclaimer: The molecular sequence of this clone aligns with the gene accession number as a point of reference only. However, individual transcript sequences of the same gene can differ through naturally occurring variations (e.g. polymorphisms), each with its own valid existence. This clone is substantially in agreement with the reference, but a complete review of all prevailing variants is recommended prior to use. [More info](#)

OTI Annotation: This clone was engineered to express the complete ORF with an expression tag. Expression varies depending on the nature of the gene.

Components: The ORF clone is ion-exchange column purified and shipped in a 2D barcoded Matrix tube containing 10ug of transfection-ready, dried plasmid DNA (reconstitute with 100 ul of water).

Reconstitution Method:

1. Centrifuge at 5,000xg for 5min.
2. Carefully open the tube and add 100ul of sterile water to dissolve the DNA.
3. Close the tube and incubate for 10 minutes at room temperature.
4. Briefly vortex the tube and then do a quick spin (less than 5000xg) to concentrate the liquid at the bottom.
5. Store the suspended plasmid at -20°C. The DNA is stable for at least one year from date of shipping when stored at -20°C.

RefSeq: [NM_024095.5](#)

RefSeq Size: 2629 bp

RefSeq ORF: 867 bp

Locus ID: 140461

UniProt ID: [Q9H765](#)

Cytogenetics: 12q13.11

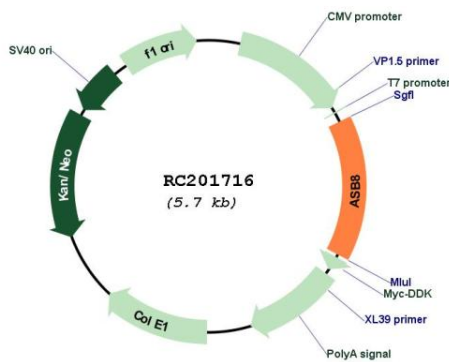
Domains: ANK

Protein Families: Druggable Genome

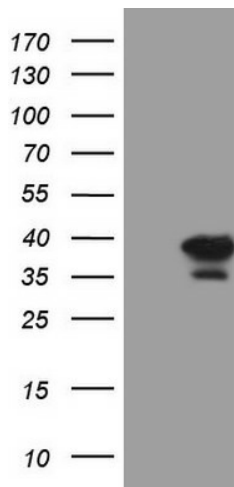
MW: 31.6 kDa

Gene Summary: May be a substrate-recognition component of a SCF-like ECS (Elongin-Cullin-SOCS-box protein) E3 ubiquitin-protein ligase complex which mediates the ubiquitination and subsequent proteasomal degradation of target proteins.[UniProtKB/Swiss-Prot Function]

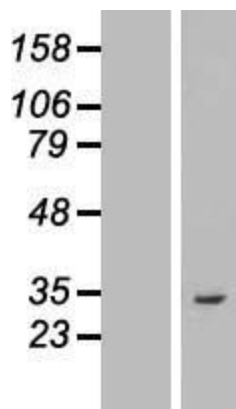
Product images:



Circular map for RC201716



HEK293T cells were transfected with the pCMV6-ENTRY control (Cat# [PS100001], Left lane) or pCMV6-ENTRY ASB8 (Cat# RC201716, Right lane) cDNA for 48 hrs and lysed. Equivalent amounts of cell lysates (5 ug per lane) were separated by SDS-PAGE and immunoblotted with anti-ASB8 (Cat# [TA808401])(1:2000). Positive lysates [LY411366] (100ug) and [LC411366] (20ug) can be purchased separately from OriGene.



Western blot validation of overexpression lysate (Cat# [LY411366]) using anti-DDK antibody (Cat# [TA50011-100]). Left: Cell lysates from untransfected HEK293T cells; Right: Cell lysates from HEK293T cells transfected with RC201716 using transfection reagent MegaTran 2.0 (Cat# [TT210002]).