

## Product datasheet for RC201711

### CMBL (NM\_138809) Human Tagged ORF Clone

#### Product data:

Product Type:	Expression Plasmids
Product Name:	CMBL (NM_138809) Human Tagged ORF Clone
Tag:	Myc-DDK
Symbol:	CMBL
Synonyms:	JS-1
Mammalian Cell Selection:	Neomycin
Vector:	pCMV6-Entry (PS100001)
E. coli Selection:	Kanamycin (25 ug/mL)
ORF Nucleotide Sequence:	>RC201711 ORF sequence Red=Cloning site Blue=ORF Green=Tags(s)

TTTTGTAATACGACTCACTATAGGGCGCCGGGAATTCGTCGACTGGATCCGGTACCGAGGAGATCTGCC  
GCC**CGATCGCC**

ATGGCTAACGAAGCTTATCCTTGTCCGTGTGACATTGGCCACAGACTTGAGTATGGAGGGCTAGGCCGTG  
AAGTTCAAGTCGAGCACATCAAGGCTTATGTCACCAAATCCCCGTTGATGCAGGCAAAGCTGTGATTGT  
CATTCAAGATATATTTGGCTGGCAGTTGCCAATACCAGATATATAGCTGACATGATCTCAGGAAATGGA  
TACACAACCATTGTTCCAGACTTCTTTGTAGGGCAAGAGCCTTGGGACCCCTCTGGCGACTGGTCTATCT  
TCCCTGAGTGGCTGAAAACAAGAAATGCCAGAAGATCGATAGAGAGATCAGTGCTATCTTGAAGTATCT  
GAAACAACAGTGTGATGCCAGAAAATTGGCATCGTGGGATTCTGCTGGGGTGGAACTGCTGTCCATCAT  
TTGATGATGAAATACTCAGAATTCAGGGCAGGGGTGTCCGTCTATGGCATTGTCAAGGATTCTGAAGACA  
TTTACAATTTAAAGAACCCCACTTTGTTCAATTTTGTGAAAATGATGTTGTGATTCCACTCAAGGACGT  
ATCTTTGCTGACTCAGAAGTTGAAAGAACACTGCAAAGTTGAATATCAAATTTAAACATTTTCTGGGCAG  
ACTCATGGGTTTCGTGCATCGGAAGAGAGAAGATTGCTCACCTGCAGACAAGCCCTACATTGACGAGGCCA  
GAAGGAATTTAATTGAGTGGCTGAACAAGTACATG

**ACGCGT**ACGCGGCCGCTCGAGCAGAACTCATCTCAGAAGAGGATCTGGCAGCAAATGATATCCTGGATT  
ACAAGGATGACGACGATAAGGTTTAA



[View online »](#)

**Protein Sequence:** >RC201711 protein sequence  
Red=Cloning site Green=Tags(s)

MANEAYPCPCDIGHRLEYGGLGREVQVEHIKAYVTKSPVDAGKAVIVIQDIFGWQLPNTRYIADMISGNG  
 YTTIVPDDFFVQGQEPWDPSPGDWSIFPEWLKTRNAQKIDREISAILKYLKQQAQKIGIVGFCWGGTAVHH  
 LMMKYSEFRAGVSYYGIVKDESDIYNLKNPTLFI FAENDVVIPLKDVSLLTQKLKEHCKVEYQIKTFSGQ  
 THGFVHRKREDCSPADKPYIDEARRNLI EWLNKYM

TRTRPLEQKLISEEDLAANDILDYKDDDDKV

**Chromatograms:** [https://cdn.origene.com/chromatograms/mk6323\\_g11.zip](https://cdn.origene.com/chromatograms/mk6323_g11.zip)

**Restriction Sites:** SgfI-MluI

**Cloning Scheme:**

Cloning sites used for ORF Shuttling:



\* The last codon before the Stop codon of the ORF

**ACCN:** NM\_138809

**ORF Size:** 735 bp

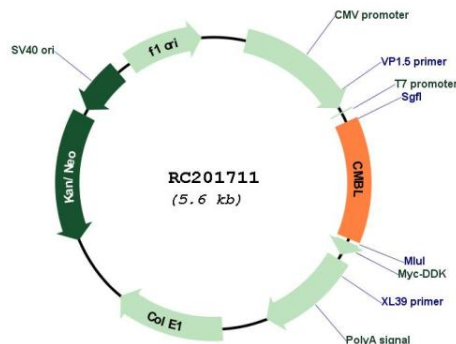
**OTI Disclaimer:** Due to the inherent nature of this plasmid, standard methods to replicate additional amounts of DNA in E. coli are highly likely to result in mutations and/or rearrangements. Therefore, OriGene does not guarantee the capability to replicate this plasmid DNA. Additional amounts of DNA can be purchased from OriGene with batch-specific, full-sequence verification at a reduced cost. Please contact our customer care team at [custsupport@origene.com](mailto:custsupport@origene.com) or by calling 301.340.3188 option 3 for pricing and delivery.

The molecular sequence of this clone aligns with the gene accession number as a point of reference only. However, individual transcript sequences of the same gene can differ through naturally occurring variations (e.g. polymorphisms), each with its own valid existence. This clone is substantially in agreement with the reference, but a complete review of all prevailing variants is recommended prior to use. [More info](#)

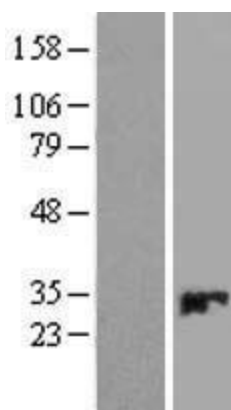
**OTI Annotation:** This clone was engineered to express the complete ORF with an expression tag. Expression varies depending on the nature of the gene.

<b>Components:</b>	The ORF clone is ion-exchange column purified and shipped in a 2D barcoded Matrix tube containing 10ug of transfection-ready, dried plasmid DNA (reconstitute with 100 ul of water).
<b>Reconstitution Method:</b>	<ol style="list-style-type: none"> <li>1. Centrifuge at 5,000xg for 5min.</li> <li>2. Carefully open the tube and add 100ul of sterile water to dissolve the DNA.</li> <li>3. Close the tube and incubate for 10 minutes at room temperature.</li> <li>4. Briefly vortex the tube and then do a quick spin (less than 5000xg) to concentrate the liquid at the bottom.</li> <li>5. Store the suspended plasmid at -20°C. The DNA is stable for at least one year from date of shipping when stored at -20°C.</li> </ol>
<b>RefSeq:</b>	<u>NM_138809.4</u>
<b>RefSeq Size:</b>	4047 bp
<b>RefSeq ORF:</b>	738 bp
<b>Locus ID:</b>	134147
<b>UniProt ID:</b>	<u>Q96DG6</u>
<b>Cytogenetics:</b>	5p15.2
<b>Domains:</b>	DLH
<b>Protein Pathways:</b>	Metabolic pathways
<b>MW:</b>	28 kDa
<b>Gene Summary:</b>	CMBL (EC 3.1.1.45) is a cysteine hydrolase of the diene lactone hydrolase family that is highly expressed in liver cytosol. CMBL preferentially cleaves cyclic esters, and it activates medoxomil-ester prodrugs in which the medoxomil moiety is linked to an oxygen atom (Ishizuka et al., 2010 [PubMed 20177059]).[supplied by OMIM, Apr 2010]

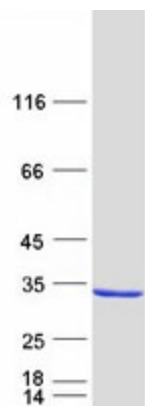
**Product images:**



Circular map for RC201711



Western blot validation of overexpression lysate (Cat# [LY408494]) using anti-DDK antibody (Cat# [TA50011-100]). Left: Cell lysates from untransfected HEK293T cells; Right: Cell lysates from HEK293T cells transfected with RC201711 using transfection reagent MegaTran 2.0 (Cat# [TT210002]).



Coomassie blue staining of purified CMBL protein (Cat# [TP301711]). The protein was produced from HEK293T cells transfected with CMBL cDNA clone (Cat# RC201711) using MegaTran 2.0 (Cat# [TT210002]).