

Product datasheet for RC201709

C8orf55 (THEM6) (NM_016647) Human Tagged ORF Clone

Product data:

Product Type: Expression Plasmids
Product Name: C8orf55 (THEM6) (NM_016647) Human Tagged ORF Clone
Tag: Myc-DDK
Symbol: C8orf55
Synonyms: C8orf55; DSCD75
Mammalian Cell Selection: Neomycin
Vector: pCMV6-Entry (PS100001)
E. coli Selection: Kanamycin (25 ug/mL)
ORF Nucleotide Sequence: >RC201709 ORF sequence
 Red=Cloning site Blue=ORF Green=Tags(s)

TTTTGTAATACGACTCACTATAGGGCGCCGGGAATTCGTCGACTGGATCCGGTACCGAGGAGATCTGCC
 GCCCGATCGCC

ATGCTGGGGCTGCTGGTGGCGTTGCTGGCCCTGGGGCTCGCTGTCTTTGCGCTGCTGGACGCTCTGGTACC
 TGGTGCCTTCCGTGCGCCGTGCTGCGCGCGCCTGCTGCAGCCGCGCGTCCGTGACCTGCTAGCTGA
 GCAGCGCTTCCCGGGCCGCGTGTGCCCTCGGACTTGGACCTGCTGCTGCACATGAACAACGCGCTAC
 CTGCGCGAGGCCGACTTTGCGCGCGTGCAGCCTGACCCGCTGCGGGGTGCTCGGGGCGCTGAGGGAGT
 TCGGGGCGCACACGGTGTGGCGCCCTCGTGCAGCGCCACCGCGCTGCTGCGCTGCTGGAGCCCTT
 CGAGGTGCGCACCCGCTGCTGGGCTGGGACGACCGCGCTTCTACCTGGAGGCGCGCTTTGTCAGCCTG
 CGGGACGGCTTCGTGTGCGCGCTGCTGCGCTTCCGGCAGCACCTGCTGGGACCTCACCCGAGCGGCTCG
 TGCAGCACCTGTGCCAGCGCAGGGTGGAGCCCCCTGAGCTGCCCGCTGATCTGCAGCACTGGATCTCCTA
 CAACGAGGCCAGCAGCCAGCTGCTCCGCATGGAGAGTGGGCTCAGTGATGTACCAAGGACCAG

ACGCGTACGCGGCCGCTCGAGCAGAACTCATCTCAGAAGAGGATCTGGCAGCAATGATATCCTGGATT
 ACAAGGATGACGACGATAAGGTTTAA

Protein Sequence: >RC201709 protein sequence
 Red=Cloning site Green=Tags(s)

MLGLLVALLALGLAVFALLDVWYLVRLPCAVLRARLLQPRVRDLLAEQRFPGRVLPDLDLLHMNNARY
 LREADFARVAHLTRCGVLGALRELRAHTVLAASCARHRRSLRLLPEFVTRLLGWDDRAFYLEARFVSL
 RDGFVCALLRFQHLGTSPEVVQHLQRRVEPPELPADLQHWISYNEASSQLLRMESGLSDVTKDQ

TRTRPLEQKLISEEDLAANDILDYKDDDDKV



[View online »](#)

Chromatograms: https://cdn.origene.com/chromatograms/mk6300_d02.zip

Restriction Sites: SgfI-MluI

Cloning Scheme:



ACCN: NM_016647

ORF Size: 624 bp

OTI Disclaimer: The molecular sequence of this clone aligns with the gene accession number as a point of reference only. However, individual transcript sequences of the same gene can differ through naturally occurring variations (e.g. polymorphisms), each with its own valid existence. This clone is substantially in agreement with the reference, but a complete review of all prevailing variants is recommended prior to use. [More info](#)

OTI Annotation: This clone was engineered to express the complete ORF with an expression tag. Expression varies depending on the nature of the gene.

Components: The ORF clone is ion-exchange column purified and shipped in a 2D barcoded Matrix tube containing 10ug of transfection-ready, dried plasmid DNA (reconstitute with 100 ul of water).

Reconstitution Method:

1. Centrifuge at 5,000xg for 5min.
2. Carefully open the tube and add 100ul of sterile water to dissolve the DNA.
3. Close the tube and incubate for 10 minutes at room temperature.
4. Briefly vortex the tube and then do a quick spin (less than 5000xg) to concentrate the liquid at the bottom.
5. Store the suspended plasmid at -20°C. The DNA is stable for at least one year from date of shipping when stored at -20°C.

RefSeq: [NM_016647.3](#)

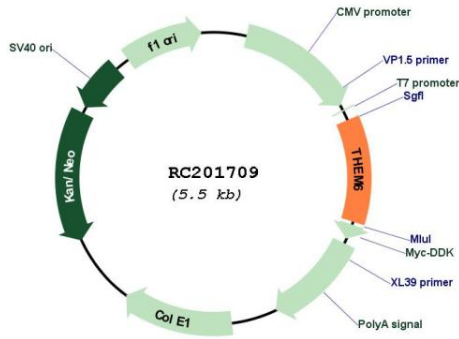
RefSeq Size: 2264 bp

RefSeq ORF: 627 bp

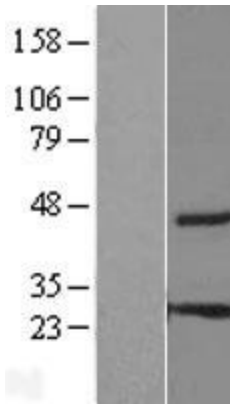
Locus ID: 51337

UniProt ID: [Q8WUY1](#)
 Cytogenetics: 8q24.3
 Protein Families: Transmembrane
 MW: 23.9 kDa

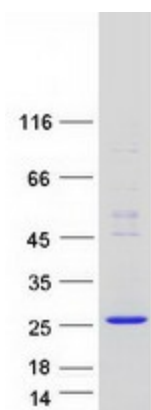
Product images:



Circular map for RC201709



Western blot validation of overexpression lysate (Cat# [LY413847]) using anti-DDK antibody (Cat# [TA50011-100]). Left: Cell lysates from untransfected HEK293T cells; Right: Cell lysates from HEK293T cells transfected with RC201709 using transfection reagent MegaTran 2.0 (Cat# [TT210002]).



Coomassie blue staining of purified THEM6 protein (Cat# [TP301709]). The protein was produced from HEK293T cells transfected with THEM6 cDNA clone (Cat# RC201709) using MegaTran 2.0 (Cat# [TT210002]).