

Product datasheet for RC201707

TMEM109 (NM_024092) Human Tagged ORF Clone

Product data:

Product Type: Expression Plasmids
 Product Name: TMEM109 (NM_024092) Human Tagged ORF Clone
 Tag: Myc-DDK
 Symbol: TMEM109
 Vector: pCMV6-Entry (PS100001)
 E. coli Selection: Kanamycin (25 ug/mL)
 Cell Selection: Neomycin
 ORF Nucleotide Sequence: >RC201707 ORF sequence
 Red=Cloning site Blue=ORF Green=Tags(s)

TTTTGTAATACGACTCACTATAGGGCGGCCGGAATTCGTCGACTGGATCCGGTACCGAGGAGATCTGCC
 GCCGCGATCGCC

ATGGCAGCCTCCAGCATCAGTTCACCATGGGGAAAGCATGTGTTCAAAGCCATTCTGATGGTCTAGTGG
 CCCTTATCCTCCTCCACTCAGCATTGGCCAGTCCCGTCGAGACTTTCACCACCAGGCCAACAGAAGAG
 AGAAGCCCAGTTGATGTCTTGACCCAGATAGGTCGATCTGTGCGAGGGACACTGGATGCCTGGATTGGG
 CCAGAGACCATGCACCTGGTGTGACAGTCTTCGTCCCAAGTGTTGTGGGCCATCTCATCAGCCATTCTG
 TGGCCTTCTTTGCTCTGTCTGGGATCGCCGCACAGCTGCTGAATGCCTTGGGACTAGCTGGTGATTACCT
 CGCCCAGGGCCTGAAGCTCAGCCCTGGCCAGGTCAGACCTTCTGCTGTGGGGAGCAGGGGCCCTGGTC
 GTCTACTGGTGTCTCTGCTCCTCGGCTTGGTCTTGGCCTTGGTGGGCGGATCCTGTGGGGCCTGA
 AGCTTGTGATCTTCTGGCCGGCTTCGTGGCCCTGATGAGGTCGGTGCCTGACCTTCCACCCGGGCCCT
 GCTACTCCTGGCCTTGTGATCCTCTACGCCCTGCTGAGCCGGCTCACTGGCTCCCGAGCCTCTGGGGCC
 CAACTCGAGGCCAAGGTGCGAGGGCTGGAACGCCAGGTGGAGGAGCTGCGCTGGCGCCAGAGGCGAGCGG
 CCAAGGGGGCCCGCAGTGTGGAGGAGGAG

ACGCGTACGCGGCCGCTCGAGCAGAACTCATCTCAGAAGAGGATCTGGCAGCAAATGATATCCTGGATT
 ACAAGGATGACGACGATAAGGTTTAA

Protein Sequence: >RC201707 protein sequence
 Red=Cloning site Green=Tags(s)

MAASSISSPWGKHVFKAILMVLVALILLHSALAQSRDF APPGQKREAPVDVLTQIGRSVRGTLDAWIG
 PETMHLVSESSQVLWATSSAISVAFFALSGIAAQLLNALGLAGDYLAQGLKLSPGVQVTFLLWGAGALV
 VYWL LLLGLV LALLGRILWGLKLVIFLAGFVALMRSVPDPSTRALLLLALLILYALLSRLTGSRASGA
 QLEAKVRGLERQVEELRWRQRAAKGARSVEEE

TRTRPLEQKLI SEEDLAANDILDYKDDDDKV

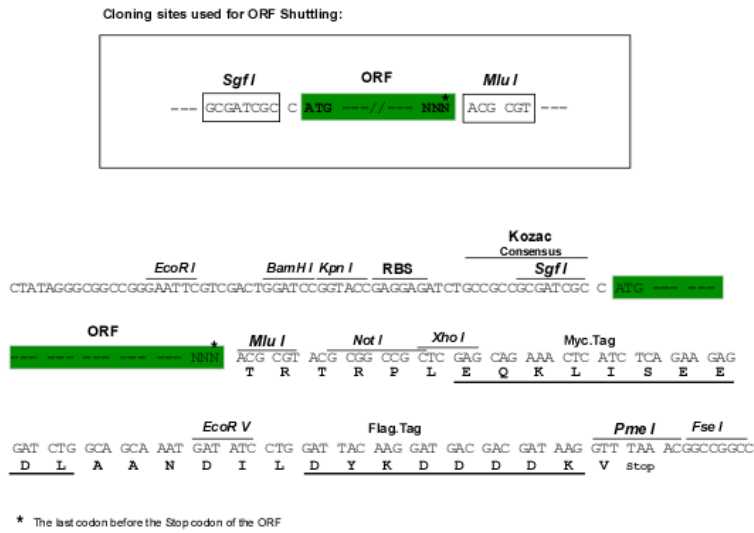


[View online »](#)

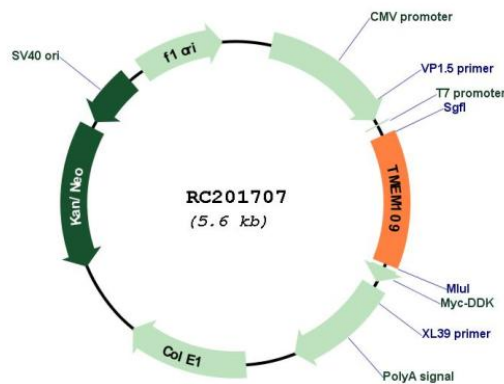
Chromatograms: https://cdn.origene.com/chromatograms/mk6300_e08.zip

Restriction Sites: SgfI-MluI

Cloning Scheme:



Plasmid Map:



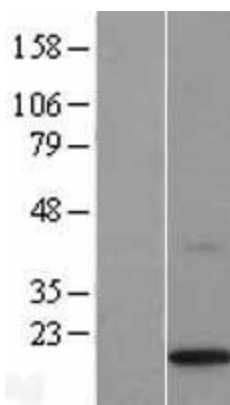
ACCN: NM_024092

ORF Size: 729 bp

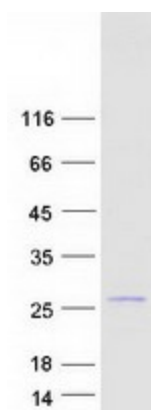
OTI Disclaimer: The molecular sequence of this clone aligns with the gene accession number as a point of reference only. However, individual transcript sequences of the same gene can differ through naturally occurring variations (e.g. polymorphisms), each with its own valid existence. This clone is substantially in agreement with the reference, but a complete review of all prevailing variants is recommended prior to use. [More info](#)

OTI Annotation:	This clone was engineered to express the complete ORF with an expression tag. Expression varies depending on the nature of the gene.
Components:	The ORF clone is ion-exchange column purified and shipped in a 2D barcoded Matrix tube containing 10ug of transfection-ready, dried plasmid DNA (reconstitute with 100 ul of water).
Reconstitution Method:	<ol style="list-style-type: none">1. Centrifuge at 5,000xg for 5min.2. Carefully open the tube and add 100ul of sterile water to dissolve the DNA.3. Close the tube and incubate for 10 minutes at room temperature.4. Briefly vortex the tube and then do a quick spin (less than 5000xg) to concentrate the liquid at the bottom.5. Store the suspended plasmid at -20°C. The DNA is stable for at least one year from date of shipping when stored at -20°C.
RefSeq:	NM_024092.3
RefSeq Size:	2412 bp
RefSeq ORF:	732 bp
Locus ID:	79073
UniProt ID:	Q9BVC6
Cytogenetics:	11q12.2
Protein Families:	Transmembrane
MW:	26.2 kDa
Gene Summary:	May mediate cellular response to DNA damage by protecting against ultraviolet C-induced cell death (PubMed:23542032). Can form voltage-gated calcium and potassium channels in vitro (By similarity).[UniProtKB/Swiss-Prot Function]

Product images:



Western blot validation of overexpression lysate (Cat# [LY411363]) using anti-DDK antibody (Cat# [TA50011-100]). Left: Cell lysates from untransfected HEK293T cells; Right: Cell lysates from HEK293T cells transfected with RC201707 using transfection reagent MegaTran 2.0 (Cat# [TT210002]).



Coomassie blue staining of purified TMEM109 protein (Cat# [TP301707]). The protein was produced from HEK293T cells transfected with TMEM109 cDNA clone (Cat# RC201707) using MegaTran 2.0 (Cat# [TT210002]).