

## Product datasheet for RC201704

### NUCKS1 (NM\_022731) Human Tagged ORF Clone

#### Product data:

Product Type: Expression Plasmids  
 Product Name: NUCKS1 (NM\_022731) Human Tagged ORF Clone  
 Tag: Myc-DDK  
 Symbol: NUCKS1  
 Synonyms: JC7; NUCKS  
 Mammalian Cell Selection: Neomycin  
 Vector: pCMV6-Entry (PS100001)  
 E. coli Selection: Kanamycin (25 ug/mL)  
 ORF Nucleotide Sequence: >RC201704 ORF sequence  
 Red=Cloning site Blue=ORF Green=Tags(s)

TTTTGTAATACGACTCACTATAGGGCGCCGGGAATTCGTCGACTGGATCCGGTACCGAGGAGATCTGCC  
 GCC**CGATCGC**C

ATGTCGGGCCTGTCAGAAATAGGAAGTTGTTGATTACTCACAGTTTCAGGAATCTGATGATGCAGATG  
 AAGATTATGGAAGAGATTCGGGCCCTCCCACTAAGAAAATTCGATCATCTCCCGAGAAGCTAAAAATAA  
 GAGGCGATCTGGAAGAATTACAGGAAGATAGTGAGGACTCAGAAGACAAAGATGTGAAGACCAAGAAG  
 GATGATTCTCACTCAGCAGAGGATAGTGAAGATGAAAAAGAAGATCATAAAAATGTGCGCCAACAACGGC  
 AGGCGGCATCTAAAGCAGCTTCTAAACAGAGAGAGATGCTCATGGAAGATGTGGCAGTGAGGAAGAACA  
 AGAAGAGGAGGATGAGGCACCATTCAGGAGAAAGATTCGGCAGCGATGAAGATTCCTAATGGAAGAT  
 GATGACGATAGTGACTATGGCAGTTCGAAAAAGAAAAACAAAAGATGGTTAAGAAGTCCAAACCTGAAA  
 GAAAAGAAAAGAAAATGCCCAAACCCAGACTAAAGGCTACAGTGACGCCAAGTCCAGTGAAGGCAAAGG  
 GAAAGTGGGTCGCCCCACAGCTTCAAAGGCATCAAAGGAAAAGACTCCTTCTCCCAAAGAAGAAGATGAG  
 GAACCGGAAAGCCCGCCAGAAAAGAAAACATCTACAAGCCCCCACCAGAAATCTGGGGATGAAGGGT  
 CTGAAGATGAAGCCCCTTCTGGGGAGGAT

**ACGCGT**ACGCGGCCGCTCGAGCAGAAACTCATCTCAGAAGAGGATCTGGCAGCAAATGATATCCTGGATT  
 ACAAGGATGACGACGATAAGGTTTAA



[View online »](#)

**Protein Sequence:** >RC201704 protein sequence  
Red=Cloning site Green=Tags(s)

MSRPVNRNKVVDYSQFQESDDADEDYGRDSGPPTKKIRSSPREAKNKRSGKNSQDESDSEDKDVKTKK  
 DDSHSAEDSEDEKEDHKNVRQQRQAASKAASKQREMLMEDVGSSEEEQEEDEAPFQEKDSGSDDFLMED  
 DDDSDYGSKKNKMKVKKSKPERKEKMPKRLKATVTPSPVKGKGVGRPTASKASKEKTPSPKEEDE  
 EPESPEKKTSTSPPEKSGDEGESEDEAPSGED

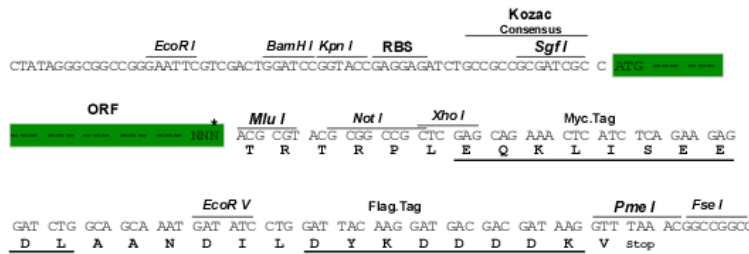
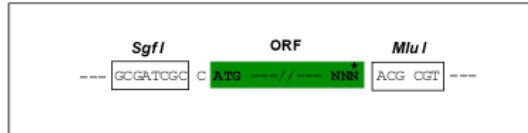
TRTRPLEQKLISEEDLAANDILDYKDDDDKV

**Chromatograms:** [https://cdn.origene.com/chromatograms/mk6300\\_e09.zip](https://cdn.origene.com/chromatograms/mk6300_e09.zip)

**Restriction Sites:** SgfI-MluI

**Cloning Scheme:**

Cloning sites used for ORF Shuttling:



\* The last codon before the Stop codon of the ORF

**ACCN:** NM\_022731

**ORF Size:** 729 bp

**OTI Disclaimer:** The molecular sequence of this clone aligns with the gene accession number as a point of reference only. However, individual transcript sequences of the same gene can differ through naturally occurring variations (e.g. polymorphisms), each with its own valid existence. This clone is substantially in agreement with the reference, but a complete review of all prevailing variants is recommended prior to use. [More info](#)

**OTI Annotation:** This clone was engineered to express the complete ORF with an expression tag. Expression varies depending on the nature of the gene.

**Components:** The ORF clone is ion-exchange column purified and shipped in a 2D barcoded Matrix tube containing 10ug of transfection-ready, dried plasmid DNA (reconstitute with 100 ul of water).

**Reconstitution Method:**

1. Centrifuge at 5,000xg for 5min.
2. Carefully open the tube and add 100ul of sterile water to dissolve the DNA.
3. Close the tube and incubate for 10 minutes at room temperature.
4. Briefly vortex the tube and then do a quick spin (less than 5000xg) to concentrate the liquid at the bottom.
5. Store the suspended plasmid at -20°C. The DNA is stable for at least one year from date of shipping when stored at -20°C.

**Note:** Plasmids are not sterile. For experiments where strict sterility is required, filtration with 0.22um filter is required.

**RefSeq:** [NM\\_022731.5](#)

**RefSeq Size:** 6471 bp

**RefSeq ORF:** 732 bp

**Locus ID:** 64710

**UniProt ID:** [Q9H1E3](#)

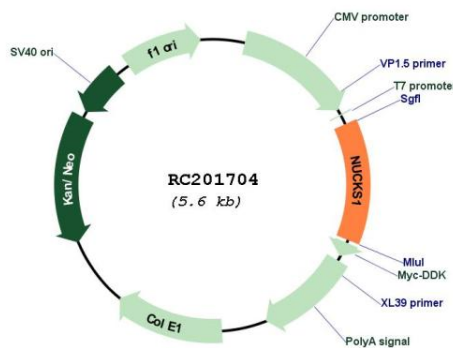
**Cytogenetics:** 1q32.1

**Protein Families:** Druggable Genome

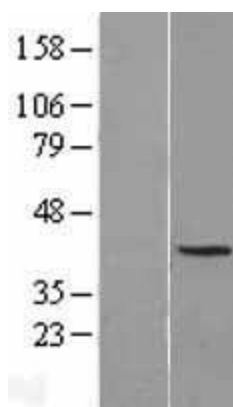
**MW:** 27.3 kDa

**Gene Summary:** This gene encodes a nuclear protein that is highly conserved in vertebrates. The conserved regions of the protein contain several consensus phosphorylation sites for casein kinase II and cyclin-dependent kinases, two putative nuclear localization signals, and a basic DNA-binding domain. It is phosphorylated in vivo by Cdk1 during mitosis of the cell cycle. [provided by RefSeq, Aug 2010]

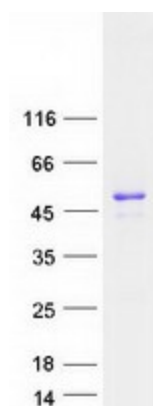
### Product images:



Circular map for RC201704



Western blot validation of overexpression lysate (Cat# [LY411597]) using anti-DDK antibody (Cat# [TA50011-100]). Left: Cell lysates from untransfected HEK293T cells; Right: Cell lysates from HEK293T cells transfected with RC201704 using transfection reagent MegaTran 2.0 (Cat# [TT210002]).



Coomassie blue staining of purified NUCKS1 protein (Cat# [TP301704]). The protein was produced from HEK293T cells transfected with NUCKS1 cDNA clone (Cat# RC201704) using MegaTran 2.0 (Cat# [TT210002]).