

## Product datasheet for RC201701L1

### p38 (CRK) (NM\_016823) Human Tagged Lenti ORF Clone

#### Product data:

Product Type:	Expression Plasmids
Product Name:	p38 (CRK) (NM_016823) Human Tagged Lenti ORF Clone
Tag:	Myc-DDK
Symbol:	p38
Synonyms:	CRKII; p38
Mammalian Cell Selection:	None
Vector:	pLenti-C-Myc-DDK (PS100064)
E. coli Selection:	Chloramphenicol (34 ug/mL)
ORF Nucleotide Sequence:	The ORF insert of this clone is exactly the same as(RC201701).
Restriction Sites:	SgfI-MluI
Cloning Scheme:	

Cloning sites used for ORF Shuttling:



\* The last codon before the Stop codon of the ORF.

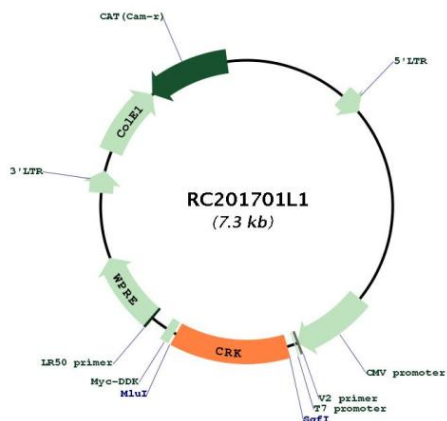
ACCN:	NM_016823
ORF Size:	912 bp



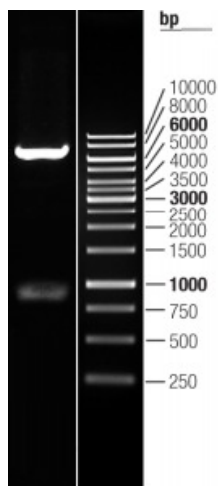
[View online »](#)

<b>OTI Disclaimer:</b>	The molecular sequence of this clone aligns with the gene accession number as a point of reference only. However, individual transcript sequences of the same gene can differ through naturally occurring variations (e.g. polymorphisms), each with its own valid existence. This clone is substantially in agreement with the reference, but a complete review of all prevailing variants is recommended prior to use. <a href="#">More info</a>
<b>OTI Annotation:</b>	This clone was engineered to express the complete ORF with an expression tag. Expression varies depending on the nature of the gene.
<b>Components:</b>	The ORF clone is ion-exchange column purified and shipped in a 2D barcoded Matrix tube containing 10ug of transfection-ready, dried plasmid DNA (reconstitute with 100 ul of water).
<b>Reconstitution Method:</b>	<ol style="list-style-type: none"><li>1. Centrifuge at 5,000xg for 5min.</li><li>2. Carefully open the tube and add 100ul of sterile water to dissolve the DNA.</li><li>3. Close the tube and incubate for 10 minutes at room temperature.</li><li>4. Briefly vortex the tube and then do a quick spin (less than 5000xg) to concentrate the liquid at the bottom.</li><li>5. Store the suspended plasmid at -20°C. The DNA is stable for at least one year from date of shipping when stored at -20°C.</li></ol>
<b>RefSeq:</b>	<a href="#">NM_016823.2</a>
<b>RefSeq Size:</b>	3225 bp
<b>RefSeq ORF:</b>	915 bp
<b>Locus ID:</b>	1398
<b>UniProt ID:</b>	<a href="#">P46108</a>
<b>Cytogenetics:</b>	17p13.3
<b>Domains:</b>	SH2, SH3
<b>Protein Families:</b>	Druggable Genome, Transcription Factors
<b>Protein Pathways:</b>	Chemokine signaling pathway, Chronic myeloid leukemia, ErbB signaling pathway, Fc gamma R-mediated phagocytosis, Focal adhesion, Insulin signaling pathway, MAPK signaling pathway, Neurotrophin signaling pathway, Pathways in cancer, Regulation of actin cytoskeleton, Renal cell carcinoma
<b>MW:</b>	33.8 kDa
<b>Gene Summary:</b>	This gene encodes a member of an adapter protein family that binds to several tyrosine-phosphorylated proteins. The product of this gene has several SH2 and SH3 domains (src-homology domains) and is involved in several signaling pathways, recruiting cytoplasmic proteins in the vicinity of tyrosine kinase through SH2-phosphotyrosine interaction. The N-terminal SH2 domain of this protein functions as a positive regulator of transformation whereas the C-terminal SH3 domain functions as a negative regulator of transformation. Two alternative transcripts encoding different isoforms with distinct biological activity have been described. [provided by RefSeq, Jul 2008]

Product images:



Circular map for RC201701L1



Double digestion of RC201701L1 using SgfI and MluI