

Product datasheet for RC201698

THOC3 (NM_032361) Human Tagged ORF Clone

Product data:

Product Type:	Expression Plasmids
Product Name:	THOC3 (NM_032361) Human Tagged ORF Clone
Tag:	Myc-DDK
Symbol:	THOC3
Synonyms:	hTREX45; THO3
Mammalian Cell Selection:	Neomycin
Vector:	pCMV6-Entry (PS100001)
E. coli Selection:	Kanamycin (25 ug/mL)
ORF Nucleotide Sequence:	>RC201698 ORF sequence Red=Cloning site Blue=ORF Green=Tags(s)

TTTTGTAATACGACTCACTATAGGGCGGCCGGAATTCGTCGACTGGATCCGGTACCGAGGAGATCTGCC
GCC**CGATCGCC**

ATGGCGGTCCCCGCTGCAGCCATGGGGCCCTCGGCGTTGGGCCAGAGCGGCCCGGCTCGATGGCCCCGT
GGTGCTCAGTGAGCAGCGGCCCGTCGCGCTACGTGCTTGGGATGCAGGAGCTGTTCCGGGGCCACAGCAA
GACGCGGAGTTCCTGGCGCACAGCGCCAAGGTGCACTCGGTGGCCTGGAGTTGCGACGGGCGTCGCCTA
GCCTCGGGGTCTTCGACAAGACGGCCAGCGTCTTCTTGGTGGAGAAGGACCGGTTGGTCAAAGAAAACA
ATTATCGGGGACATGGGGATAGTGTGGACCAGCTTTGTTGGCATCCAAGTAATCCTGACCTATTTGTTAC
GGCGTCTGGAGATAAAACCATTCGCATCTGGGATGTGAGGACTACAAAATGCATTGCCACTGTGAACACT
AAAGGGGAGAACATTAATATCTGCTGGAGTCTGATGGGCAGACCATTGCTGTAGGCAACAAGGATGATG
TGGTGACCTTTATTGATGCCAAGACACCCGTTCCAAAGCAGAAGAGCAGTTCAAGTTCGAGGTCAACGA
AATCTCCTGGAACAATGACAATAATATGTTCTTCTGACAAATGGCAATGGTTGTATCAACATCCTCAGC
TACCCAGAAGTGAAGCCTGTGCAGTCCATCAACGCCATCCTTCCAAGTGCATCTGTATCAAGTTTGACC
CCATGGGAAGTACTTTGCCACAGGAAGTGCAGATGCTTTGGTCAAGCCTCTGGGATGTGGATGAGTTAGT
GTGTGTTTCGGTGCTTTTCCAGGCTGGATTGGCCTGTAAGAACCCTCAGTTTCAGCCATGATGGGAAAATG
CTGGCGTCAGCATCGGAAGATCATTTTATTGACATTGCTGAAGTGGAGACAGGGGACAAACTATGGGAGG
TACAGTGTGAGTCTCCGACCTTACAGTGGCGTGGCACCCCAAAAGGCCTCTGCTGGCATTGCGCTGTGA
TGACAAAGACGGCAAATATGACAGCAGCCGGAAGCCGGAAGTGTGAAGCTGTTGGGCTTCTAATGAT
TCT

ACGCGTACGCGGCCGCTCGAGCAGAAACTCATCTCAGAAGAGGATCTGGCAGCAAATGATATCCTGGATT
ACAAGGATGACGACGATAAGGTTTAA



[View online »](#)

Protein Sequence: >RC201698 protein sequence
Red=Cloning site Green=Tags(s)

MAVPAAMGPSALGQSGPGSMAPWCSVSSGSPRYVLGMQELFRGHSKTREFLAHSAKVHSAVWASCDGRRL
 ASGSFDKTASVFLLEKDRLVKENNYRGHGDSVDQLCWHPSNPDLFVTASGDKTIRIWDVRTTKCIATVNT
 KGENINICWSPDGQTIIVGNKDDVVTFIDAKTHRSKAAEQKFVNEISWNNNDNMFFLTNGNGCINILS
 YPELKPVQSIHAHPSNCICIKFDPMGKYFATGSADALVSLWDVDELVCVRCFSRLDWPVRTLSFSDHGKM
 LASASEDFHIDIAEVETGDKLWEVQCESPTFTVAWHPKRPLLAFCDDKDGKYDSSREAGTVKLFGLPND
 S

TRTRPLEQKLISEEDLAANDILDYKDDDDKV

Chromatograms: https://cdn.origene.com/chromatograms/mk6138_h08.zip

Restriction Sites: SgfI-MluI

Cloning Scheme:



* The last codon before the Stop codon of the ORF

ACCN: NM_032361

ORF Size: 1053 bp

OTI Disclaimer: The molecular sequence of this clone aligns with the gene accession number as a point of reference only. However, individual transcript sequences of the same gene can differ through naturally occurring variations (e.g. polymorphisms), each with its own valid existence. This clone is substantially in agreement with the reference, but a complete review of all prevailing variants is recommended prior to use. [More info](#)

OTI Annotation: This clone was engineered to express the complete ORF with an expression tag. Expression varies depending on the nature of the gene.

Components: The ORF clone is ion-exchange column purified and shipped in a 2D barcoded Matrix tube containing 10ug of transfection-ready, dried plasmid DNA (reconstitute with 100 ul of water).

Reconstitution Method:

1. Centrifuge at 5,000xg for 5min.
2. Carefully open the tube and add 100ul of sterile water to dissolve the DNA.
3. Close the tube and incubate for 10 minutes at room temperature.
4. Briefly vortex the tube and then do a quick spin (less than 5000xg) to concentrate the liquid at the bottom.
5. Store the suspended plasmid at -20°C. The DNA is stable for at least one year from date of shipping when stored at -20°C.

RefSeq: [NM_032361.1](#), [NP_115737.1](#)

RefSeq Size: 1617 bp

RefSeq ORF: 1056 bp

Locus ID: 84321

UniProt ID: [Q96J01](#)

Cytogenetics: 5q35.2

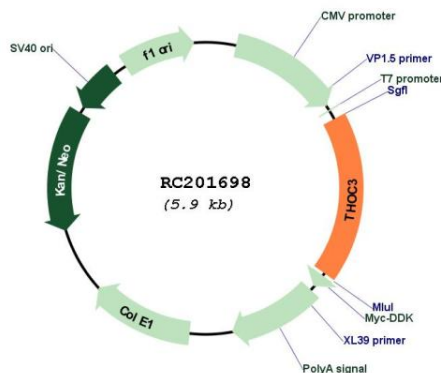
Domains: WD40

Protein Pathways: Spliceosome

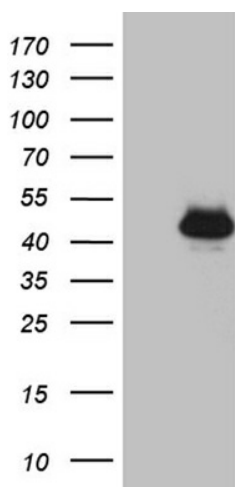
MW: 38.8 kDa

Gene Summary: This gene encodes a component of the nuclear THO transcription elongation complex, which is part of the larger transcription export (TREX) complex that couples messenger RNA processing and export. In humans, the transcription export complex is recruited to the 5'-end of messenger RNAs in a splicing- and cap-dependent manner. Studies of a related complex in mouse suggest that the metazoan transcription export complex is involved in cell differentiation and development. A pseudogene of this gene has been defined on chromosome 5. [provided by RefSeq, May 2013]

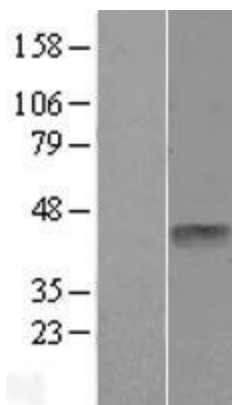
Product images:



Circular map for RC201698



HEK293T cells were transfected with the pCMV6-ENTRY control (Cat# [PS100001], Left lane) or pCMV6-ENTRY THOC3 (Cat# RC201698, Right lane) cDNA for 48 hrs and lysed. Equivalent amounts of cell lysates (5 ug per lane) were separated by SDS-PAGE and immunoblotted with anti-THOC3 (Cat# [TA809367])(1:2000). Positive lysates [LY403157] (100ug) and [LC403157] (20ug) can be purchased separately from OriGene.



Western blot validation of overexpression lysate (Cat# [LY403157]) using anti-DDK antibody (Cat# [TA50011-100]). Left: Cell lysates from untransfected HEK293T cells; Right: Cell lysates from HEK293T cells transfected with RC201698 using transfection reagent MegaTran 2.0 (Cat# [TT210002]).