

## Product datasheet for **RC201696**

### **BCL7B (NM\_001707) Human Tagged ORF Clone**

#### Product data:

Product Type: Expression Plasmids  
Product Name: BCL7B (NM\_001707) Human Tagged ORF Clone  
Tag: Myc-DDK  
Symbol: BCL7B  
Mammalian Cell Selection: Neomycin  
Vector: pCMV6-Entry (PS100001)  
E. coli Selection: Kanamycin (25 ug/mL)  
ORF Nucleotide Sequence: >RC201696 ORF sequence  
Red=Cloning site Blue=ORF Green=Tags(s)

TTTTGTAATACGACTCACTATAGGGCGGCCGGAATTCGTCGACTGGATCCGGTACCGAGGAGATCTGCC  
GCC**CGGATCGCC**

ATGTGGGCGCGGTCTGGTCCGGGCGGAGACCCGAGCCGGGCCAAGGACGACATCAAGAAGGTGATGGCGG  
CCATCGAGAAAGTGGGAAATGGGAGAAGAAGTGGGTGACTGTGGGTGACACGTCCCTGAGGATATTTAA  
GTGGGTTCTGTGACAGACAGCAAGGAGAAAGAAAAGTCAAAATCGAACAGTTTCCAGGACGAGGAGAACCT  
AATGGCTTTCTTCTGATGCCTCAGCCAATTCCTCTCTCTTCTTGAATTCAGGACGAGGAGAACCT  
AGAGTTCCGTGTCTGACGTCTATCAGCTTAAGGTGGACAGCAGCAGCACTCAAGCCCCAGCCCCAGCA  
GAGTGAGTCCCTGAGCCAGCACACACCTCCGACTTCCGACGGATGACTCCAGCCCCAACGCTGGGC  
CAGGAGATCCTGGAGGAGCCCTCCCTGCCCTCCTCGGAAGTTGCTGATGAACCTCTACCTCACCAAGG  
AAGAACCAGTTCCACTAGAGACACAGGTCGTTGAGGAAGAGGAAGACTCAGGTGCCCCGCCCTGAAGCG  
CTTCTGTGTGGACCAACCCACAGTGCCGACAGCGCGTCAGAAAGC

**ACGCGT**ACGCGGCCGCTCGAGCAGAACTCATCTCAGAAGAGGATCTGGCAGCAAATGATATCTGGATT  
ACAAGGATGACGACGATAAGGTTTAA

Protein Sequence: >RC201696 protein sequence  
Red=Cloning site Green=Tags(s)

MSGRSVRAETRSRAKDDIKKVMAAIEKVRKWEKKWVTVGDTSLRIFKWPVPTDSKEKEKSKSNSSAAREP  
NGFPSDASANSLLLLFQDENSQSSVSDVYQLKVDSTNSSPSPQSESLSPAHTSDFRTDDSQPPTLG  
QEILEEPSLPSSEVADEPPTLTKEEPVPLETQVVEEEDSGAPPLKRFCVDQPTVPQTASES

**TR**TRPLEQKLISEEDLAANDILDYKDDDDKV

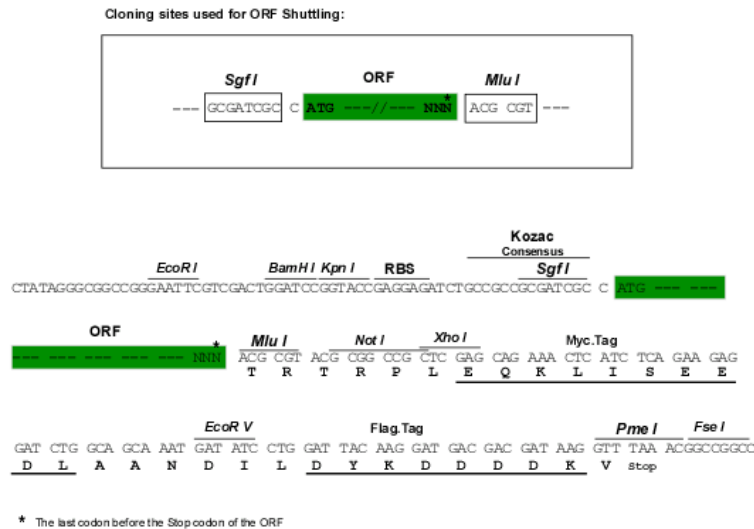
Chromatograms: [https://cdn.origene.com/chromatograms/mk6287\\_a03.zip](https://cdn.origene.com/chromatograms/mk6287_a03.zip)



[View online »](#)

Restriction Sites: SgfI-MluI

Cloning Scheme:



ACCN: NM\_001707

ORF Size: 606 bp

OTI Disclaimer: The molecular sequence of this clone aligns with the gene accession number as a point of reference only. However, individual transcript sequences of the same gene can differ through naturally occurring variations (e.g. polymorphisms), each with its own valid existence. This clone is substantially in agreement with the reference, but a complete review of all prevailing variants is recommended prior to use. [More info](#)

OTI Annotation: This clone was engineered to express the complete ORF with an expression tag. Expression varies depending on the nature of the gene.

Components: The ORF clone is ion-exchange column purified and shipped in a 2D barcoded Matrix tube containing 10ug of transfection-ready, dried plasmid DNA (reconstitute with 100 ul of water).

Reconstitution Method:

1. Centrifuge at 5,000xg for 5min.
2. Carefully open the tube and add 100ul of sterile water to dissolve the DNA.
3. Close the tube and incubate for 10 minutes at room temperature.
4. Briefly vortex the tube and then do a quick spin (less than 5000xg) to concentrate the liquid at the bottom.
5. Store the suspended plasmid at -20°C. The DNA is stable for at least one year from date of shipping when stored at -20°C.

Note: Plasmids are not sterile. For experiments where strict sterility is required, filtration with 0.22um filter is required.

RefSeq: [NM\\_001707.4](#)

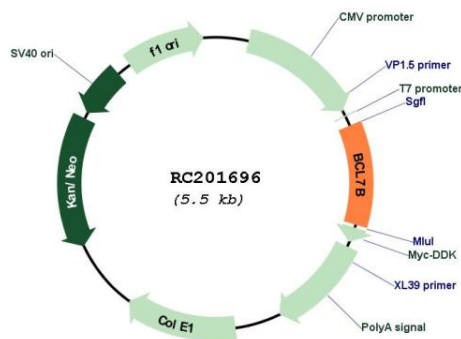
RefSeq Size: 1729 bp

RefSeq ORF: 609 bp

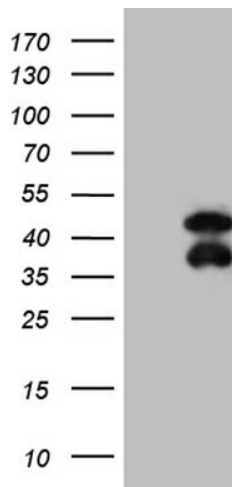
**Locus ID:** 9275  
**UniProt ID:** [Q9BQE9](#)  
**Cytogenetics:** 7q11.23  
**Domains:** BCL\_N  
**MW:** 22.2 kDa

**Gene Summary:** This gene encodes a member of the BCL7 family including BCL7A, BCL7B and BCL7C proteins. This member is BCL7B, which contains a region that is highly similar to the N-terminal segment of BCL7A or BCL7C proteins. The BCL7A protein is encoded by the gene known to be directly involved in a three-way gene translocation in a Burkitt lymphoma cell line. This gene is located at a chromosomal region commonly deleted in Williams syndrome. This gene is highly conserved from *C. elegans* to human. Multiple alternatively spliced transcript variants have been found for this gene. [provided by RefSeq, Oct 2010]

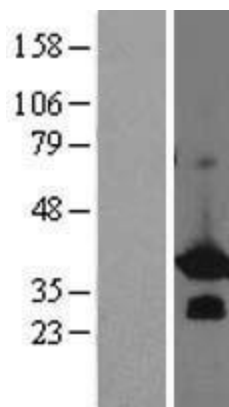
## Product images:



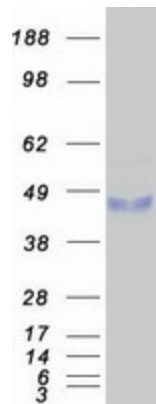
Circular map for RC201696



HEK293T cells were transfected with the pCMV6-ENTRY control (Cat# [PS100001], Left lane) or pCMV6-ENTRY BCL7B (Cat# RC201696, Right lane) cDNA for 48 hrs and lysed. Equivalent amounts of cell lysates (5 ug per lane) were separated by SDS-PAGE and immunoblotted with anti-BCL7B (Cat# [TA809485])(1:2000). Positive lysates [LY419788] (100ug) and [LC419788] (20ug) can be purchased separately from OriGene.



Western blot validation of overexpression lysate (Cat# [LY419788]) using anti-DDK antibody (Cat# [TA50011-100]). Left: Cell lysates from untransfected HEK293T cells; Right: Cell lysates from HEK293T cells transfected with RC201696 using transfection reagent MegaTran 2.0 (Cat# [TT210002]).



Coomassie blue staining of purified BCL7B protein (Cat# [TP301696]). The protein was produced from HEK293T cells transfected with BCL7B cDNA clone (Cat# RC201696) using MegaTran 2.0 (Cat# [TT210002]).