

Product datasheet for **RC201690**

TTC1 (NM_003314) Human Tagged ORF Clone

Product data:

| | |
|---------------------------|---|
| Product Type: | Expression Plasmids |
| Product Name: | TTC1 (NM_003314) Human Tagged ORF Clone |
| Tag: | Myc-DDK |
| Symbol: | TTC1 |
| Synonyms: | TPR1 |
| Mammalian Cell Selection: | Neomycin |
| Vector: | pCMV6-Entry (PS100001) |
| E. coli Selection: | Kanamycin (25 ug/mL) |
| ORF Nucleotide Sequence: | >RC201690 ORF sequence Red=Cloning site Blue=ORF Green=Tags(s) |

TTTTGTAATACGACTCACTATAGGGCGGCCGGAATTCGTCGACTGGATCCGGTACCGAGGAGATCTGCC
GCC**CGATCGCC**

ATGGGGGAGAAGTCAGAGAACTGTGGGGTTCCAGAGGATCTGTTAAATGGTTTGAAGTTACAGATACTC
AGGAAGCCGAGTGTGCTGGCCCTCCAGTTCCTGATCCCAAAAATCAGCATTCCCAGAGTAAGCTGCTCAG
GGATGATGAGGCCATCTCCAGGAGGACCAGGGAGAAGAGGAGTGTTCATGACTGCAGTGCCTCATT
GAGGAGGAGCCAGGAGCGGACAAGGTTGAGAACAATCTAATGAAGATGTGAATTCCTCTGAACTAGATG
AAGAATACCTAATAGAACTGAAAAAAACATGTCGGATGAAGAGAAACAGAAAAGAAGAGAAGAGAGCAC
TAGACTAAAGGAGGAGGAAATGAACAGTTAAGAAAGGAGATTATAGAAAGCTGAAAGTTCTTATAGT
CGAGCCCTCGAAATGTGCCATCCTGCTTCCAAAAGGAGAGGTCGATTCTATTTCAAATAGAGCTGCAG
CAAGGATGAAACAGGACAAGAAAGAAATGGCCATCAATGACTGCAGCAAAGCAATTCAATTAACCCCGAG
CTATATCAGGGCAATATTGAGGAGAGCAGAGTTGTATGAGAAGACGGACAAGCTAGATGAAGCCCTGGAA
GACTATAAATCTATTTAGAAAAAGATCCATCAATACATCAAGCAAGAGAAGCTTGTATGAGATTACCTA
AGCAAATTGAAGAACGTAATGAAAGACTAAAAGAAGAGATGTTAGGTAATTAAGATCTTGGAACTT
GGTTCTCCGACCTTTTGGGCTCTCCACGGAAAAATTTCCAGATCAAACAGGATTCCTCTACCGGCTCGTAC
TCCATCAATTTGTTCAAATCCAAATAATAACAGA

ACGCGTACGCGGCCGCTCGAGCAGAAACTCATCTCAGAAGAGGATCTGGCAGCAAATGATATCCTGGATT
ACAAGGATGACGACGATAAGGTTTAA



[View online »](#)

Protein Sequence: >RC201690 protein sequence
Red=Cloning site Green=Tags(s)

MGEKSENGVPEDLLNGLKVTDTQEACAGPPVPDPKNQHSQSKLLRDDEAHLQEDQGEEECFHDCSASF
 EEEPGADKVENKSNEDVNSSELDEEYLIELKKNMSDEEKQKRREESTRLKEEGNEQFKKGDYIEAESSYS
 RALEMCPSCFQKERSILFSNRAAARMKQDKKEMAINDCSKAIQLNPSYIRAILRRAELYEKTDKLEALE
 DYKSILEKDPSTHQAREACMRLPKQIEERNERLKEEMLGKLDLGNLVL RPFGLSTENFQIKQDSSTGSY
 SINFVQNPNNNR

TRTRPLEQKLISEEDLAANDILDYKDDDDKV

Chromatograms: https://cdn.origene.com/chromatograms/mk6299_h03.zip

Restriction Sites: SgfI-MluI

Cloning Scheme:



ACCN: NM_003314

ORF Size: 876 bp

OTI Disclaimer: The molecular sequence of this clone aligns with the gene accession number as a point of reference only. However, individual transcript sequences of the same gene can differ through naturally occurring variations (e.g. polymorphisms), each with its own valid existence. This clone is substantially in agreement with the reference, but a complete review of all prevailing variants is recommended prior to use. [More info](#)

OTI Annotation: This clone was engineered to express the complete ORF with an expression tag. Expression varies depending on the nature of the gene.

Components: The ORF clone is ion-exchange column purified and shipped in a 2D barcoded Matrix tube containing 10ug of transfection-ready, dried plasmid DNA (reconstitute with 100 ul of water).

Reconstitution Method:

1. Centrifuge at 5,000xg for 5min.
2. Carefully open the tube and add 100ul of sterile water to dissolve the DNA.
3. Close the tube and incubate for 10 minutes at room temperature.
4. Briefly vortex the tube and then do a quick spin (less than 5000xg) to concentrate the liquid at the bottom.
5. Store the suspended plasmid at -20°C. The DNA is stable for at least one year from date of shipping when stored at -20°C.

RefSeq: [NM_003314.3](#)

RefSeq Size: 1500 bp

RefSeq ORF: 879 bp

Locus ID: 7265

UniProt ID: [Q99614](#)

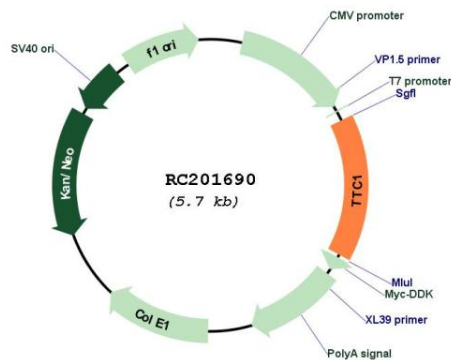
Cytogenetics: 5q33.3

Domains: TPR

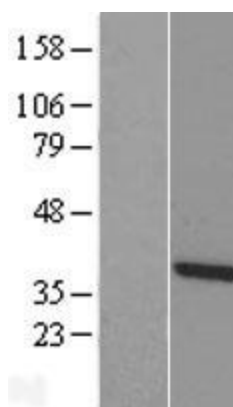
MW: 33.5 kDa

Gene Summary: This gene encodes a protein that belongs to the tetratricopeptide repeat superfamily of proteins. The encoded protein plays a role in protein-protein interactions, and binds to the Galpha subunit of G protein-coupled receptors to activate the Ras signaling pathway. Alternate splicing results in multiple transcript variants. [provided by RefSeq, Sep 2013]

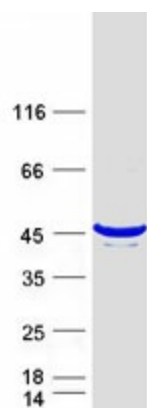
Product images:



Circular map for RC201690



Western blot validation of overexpression lysate (Cat# [LY418776]) using anti-DDK antibody (Cat# [TA50011-100]). Left: Cell lysates from untransfected HEK293T cells; Right: Cell lysates from HEK293T cells transfected with RC201690 using transfection reagent MegaTran 2.0 (Cat# [TT210002]).



Coomassie blue staining of purified TTC1 protein (Cat# [TP301690]). The protein was produced from HEK293T cells transfected with TTC1 cDNA clone (Cat# RC201690) using MegaTran 2.0 (Cat# [TT210002]).