

Product datasheet for **RC201684**

SACM1L (NM_014016) Human Tagged ORF Clone

Product data:

Product Type:	Expression Plasmids
Product Name:	SACM1L (NM_014016) Human Tagged ORF Clone
Tag:	Myc-DDK
Symbol:	SACM1L
Synonyms:	SAC1
Mammalian Cell Selection:	Neomycin
Vector:	pCMV6-Entry (PS100001)
E. coli Selection:	Kanamycin (25 ug/mL)



[View online »](#)

ORF Nucleotide Sequence:

>RC201684 representing NM_014016
 Red=Cloning site Blue=ORF Green=Tags(s)

TTTTGTAATACGACTCACTATAGGGCGGCCGGAATTCGTCGACTGGATCCGGTACCGAGGAGATCTGCC
 GCC**CGCATCGCC**

ATGGCGACGGCGCCTACGAGCAGCTGAAGCTGCATATCACACCTGAAAAATTTTATGTGGAAGCTTGTG
 ATGATGGAGCAGATGACGTACTTACCATTGACCGTGTGTCCACAGAGTTACCCTTGCAGTCAAGAAAGA
 TGTTCCCTCCTCAGCTGTCACAAGACCAATATTTGGTATACTGGGCACAATCCATCTGGTGGCAGGTAAT
 TATCTTATAGTCATTACCAAAAAGATAAAAGTAGGTGAATTTTTTTCAGTCATGTAGTCTGGAAAGCAACAG
 ATTTTGTATGTCCTTTCTTATAAGAAGACAATGTTGCACCTAACTGATTCAGTTACAAGATAATAAAAC
 CTTCTAGCGATGCTAAACCATGTCTTGAATGTGGATGGATTTTACTTTTCAACAACATATGATTTGACC
 CATACTTTCAGCGGCTATCCAACACTAGTCTGAATTCGAAGAAATGAGTCTCTGGAAAGGGCAGATC
 AGCGGTTTGTATGGAATGGTCATCTTCTAAGAGAATTTCTGCACAGCCAGAGGTTTCATCGGTTTGCCTT
 TCCAGTGTACATGGCTTTATTACCATGCATTCATGTTCTATTAATGGAAAATACTTTGATTGGATTCTC
 ATCTCGAGGAGGAGCTGTTTCAGAGCTGGTGTGCGCTATTATGTAAGAGGAATTGATTCCGAAAGGCCATG
 CAGCTAACTTTGTAGAAAAGACAACAAATTTGTGCACTACAATGGGAGCAAAGCTTCGTTTGTACAGACTCG
 AGGATCAATACCTGTTTTCTGGTCCCAAAGACCAACCTCAAGTACAAACCACTGCCACAGATCAGCAAA
 GTAGCAAAATCACATGGACGGTTTCCAAAGGCATTTTGATTCCCAAGTAATTTTATGAAAAACAAGTTA
 TAATCAATCTGATTAACCAGAAGGGCTCGGAGAAGCCACTTGAGCAGACATTTGCAACAATGGTGTCTTC
 CTTGGGAAGTGAATGATGAGATACATTGCCTTTGACTTCATAAGGAATGTAATAATGATGATGGGAT
 CGACTAAGTATTTTATTGGATCAGGTAGCAGAAATGCAAGATGAATTAAGTTATTTTCTAGTGGACTCTG
 CTGGCCAGGTGGTGGCAAACAGGAAGGGCTGTTCCGAAGCAATTCATGGATTGTCTAGATGAACCAA
 TGTGATCCAGAGTTTGTAGCTCGTCTCACTTCAGGCCCAACTTCAGAGACTAGGAGTTTTGCATGTG
 GGACAAAAGCTTGAAGAACAAGATGAATTTGAGAAGATTTTCAAAAATGCCTGGGCTGACAAACGCAATG
 CTTGTGCCAAGCAATATGCGGGAAGTGGTGCCTTGAAGACTGACTTTACCAGAAGTGGAAAGAGAAGTCA
 TTTGGGACTTATAATGGATGGCTGGAAGTCAATGATACGATATTATAAGAACAACTTTCCGATGGATTT
 AGACAAGATCCATAGACTTATTTCTTGGAAACTATTCAGTGGATGAATTAGAATCTCATAGTCTTTAA
 GTGTTCCAAGGGACTGAAAATCCTGGCTTGCCTATTATCATGGTTGTTGCCTTTTCAATGTGCATTAT
 CTGTTTGCTTATGGCTGGTGCACCTGGACAGAAACACTGGCCTATGTGCTCTTCTGGGAGTTGCAAGC
 ATTGGAACATTTTTATCATTCTTTACAATGGCAAAGATTTTGTGATGCTCCAGACTGGTCCAGAAAG
 AAAAGATAGAC

ACGCGTACGCGGCCGCTCGAGCAGAAACTCATCTCAGAAGAGGATCTGGCAGCAAATGATATCCTGGATT
 ACAAGGATGACGACGATAAGGTTTAA

Protein Sequence:

>RC201684 representing NM_014016
 Red=Cloning site Green=Tags(s)

MATAAYEQLKLHITPEKFYVEACDDGADDVLTIDRVSTEVTLAVKKDVPPSAVTRPIFGILGTIHLVAGN
 YLIVITKKIKVGEFFSHVVKATDFDVL SYKKTMLHLTDIQLQDNKTF LAMLNHVLNVDGFYFSTTYDLT
 HTLQRLSNTSPEFQEMSLERADQRFVWNGHLLRELSAQPEVHRFALPVLHGFITMHS CSINGKYFDWIL
 ISRRSCFRAGVRYVYRGIDSEGHAANFVETEQIVHYNGSKASFVQTRGSI PVFWSQRPNLKYKPLPQISK
 VANHMDGFQRHFD SQVIIYGKQVIINL INQKGSEKPLEQTFATMVSSLGSGMMRYIAFDHFHKECKNMRWD
 RLSILLDQVAEMQDEL SYFLVDSAGQVVANQEGVFRSNCMDCLDRTNVIQSLLARRSLQAQLQRLGVLHV
 GQKLEEQDEFEKIFKNAWADNANACAKQYAGTGALKTDFTRTGKRTHLGLIMDGWNSMIRYKNNFSDGF
 RQDSIDLFLGNYSVDELESHSPLSVPRDWKFLALPIIMVVAFSMCIICLLMAGDWTWETLAVYLVFWGVAS
 IGTFFIILYNGKDFVDAPRLVQKEKID

TRTRPLEQKLISEEDLAANDILDYKDDDDKV

Chromatograms:

https://cdn.origene.com/chromatograms/mg3802_d05.zip

Restriction Sites: SgfI-MluI

Cloning Scheme:



ACCN: NM_014016

ORF Size: 1761 bp

OTI Disclaimer: Due to the inherent nature of this plasmid, standard methods to replicate additional amounts of DNA in *E. coli* are highly likely to result in mutations and/or rearrangements. Therefore, OriGene does not guarantee the capability to replicate this plasmid DNA. Additional amounts of DNA can be purchased from OriGene with batch-specific, full-sequence verification at a reduced cost. Please contact our customer care team at custsupport@origene.com or by calling 301.340.3188 option 3 for pricing and delivery.

The molecular sequence of this clone aligns with the gene accession number as a point of reference only. However, individual transcript sequences of the same gene can differ through naturally occurring variations (e.g. polymorphisms), each with its own valid existence. This clone is substantially in agreement with the reference, but a complete review of all prevailing variants is recommended prior to use. [More info](#)

OTI Annotation: This clone was engineered to express the complete ORF with an expression tag. Expression varies depending on the nature of the gene.

Components: The ORF clone is ion-exchange column purified and shipped in a 2D barcoded Matrix tube containing 10ug of transfection-ready, dried plasmid DNA (reconstitute with 100 ul of water).

Reconstitution Method:

1. Centrifuge at 5,000xg for 5min.
2. Carefully open the tube and add 100ul of sterile water to dissolve the DNA.
3. Close the tube and incubate for 10 minutes at room temperature.
4. Briefly vortex the tube and then do a quick spin (less than 5000xg) to concentrate the liquid at the bottom.
5. Store the suspended plasmid at -20°C. The DNA is stable for at least one year from date of shipping when stored at -20°C.

Note: Plasmids are not sterile. For experiments where strict sterility is required, filtration with 0.22um filter is required.

RefSeq: [NM_014016.5](#)

RefSeq Size: 3550 bp

RefSeq ORF: 1764 bp

Locus ID: 22908

UniProt ID: [Q9NTJ5](#)

Cytogenetics: 3p21.31

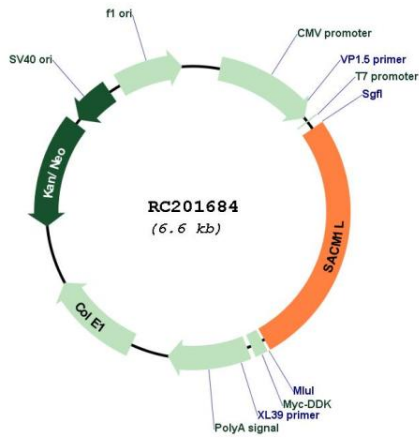
Domains: Syja_N

Protein Families: Druggable Genome, Transmembrane

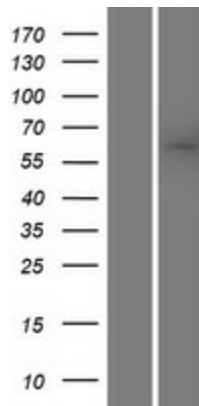
MW: 66.8 kDa

Gene Summary: This gene encodes an integral membrane protein, which is localized to the endoplasmic reticulum, and functions as a phosphoinositide phosphatase that hydrolyzes phosphatidylinositol 3-phosphate, phosphatidylinositol 4-phosphate, and phosphatidylinositol 3,5-bisphosphate. Deletion of this gene in mouse results in preimplantation lethality. Other studies suggest that this gene is also involved in the organization of golgi membranes and mitotic spindles. Alternatively spliced transcript variants have been found for this gene. A C-terminally extended isoform is also predicted to be produced by the use of an alternative in-frame, downstream translation termination codon via a stop codon readthrough mechanism.[provided by RefSeq, Dec 2017]

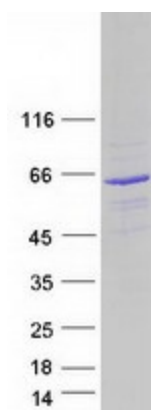
Product images:



Circular map for RC201684



Western blot validation of overexpression lysate (Cat# [LY415521]) using anti-DDK antibody (Cat# [TA50011-100]). Left: Cell lysates from untransfected HEK293T cells; Right: Cell lysates from HEK293T cells transfected with RC201684 using transfection reagent MegaTran 2.0 (Cat# [TT210002]).



Coomassie blue staining of purified SACM1L protein (Cat# [TP301684]). The protein was produced from HEK293T cells transfected with SACM1L cDNA clone (Cat# RC201684) using MegaTran 2.0 (Cat# [TT210002]).