

Product datasheet for RC201681

ARMER (ARL6IP1) (NM_015161) Human Tagged ORF Clone

Product data:

Product Type: Expression Plasmids
Product Name: ARMER (ARL6IP1) (NM_015161) Human Tagged ORF Clone
Tag: Myc-DDK
Symbol: ARMER
Synonyms: AIP1; ARL6IP; ARMER; SPG61
Mammalian Cell Selection: Neomycin
Vector: pCMV6-Entry (PS100001)
E. coli Selection: Kanamycin (25 ug/mL)
ORF Nucleotide Sequence: >RC201681 ORF sequence
 Red=Cloning site Blue=ORF Green=Tags(s)

TTTTGTAATACGACTCACTATAGGGCGGCCGGAATTCGTCGACTGGATCCGGTACCGAGGAGATCTGCC
GCC**CGATCGCC**

ATGGCGGAGGGAGATAATCGCAGACCAACCTGCTGGCTGCAGAGACTGCAAGTCTGGAAGAACAGCTGC
AAGGATGGGGAGAAGTGATGCTGATGGCTGATAAAGTCTCCGATGGGAAAGAGCCTGGTTTCCACCTGC
CATCATGGGTGTGGTTTCTTTGGTGTCTGATTACTACTATCTAGATCCATCTGTTCTGTCCGGCGTT
TCCTGTTTTGTTATGTTTTGTGCTTGGCTGACTACCTTGTCCATTCTAGCGCCTAGAATTTTTGGCT
CCAATAAATGGACCACTGAACAACAGCAAAGATCCATGAAATTTGCAGCAATCTAGTAAAACTCGACG
CAGAGCTGTGGTTGGTGGAAACGCCTTTCACACTAAAGGAAGAAAAACCTAAGATGTACTTCATGACC
ATGATCGTTTTCCCTTGCTGCGGTTGCTTGGGTGGGACAACAAGTCCACAACCTGTTCTCACCTACCTGA
TAGTGACTTCCTTACTATTGCTTCTGGACTAAACCAACATGGAATCATTTTGAAGTACATTGGAATGGC
CAAGAGGGAGATAAACAACTTCTCAAACAAAAAGAAAAGAAAAACGAA

ACGCGTACGCGGCCGCTCGAGCAGAACTCATCTCAGAAGAGGATCTGGCAGCAATGATATCCTGGATT
ACAAGGATGACGACGATAAGGTTTAA

Protein Sequence: >RC201681 protein sequence
 Red=Cloning site Green=Tags(s)

MAEGDNRSTNLLAAETASLEEQLQGWEVMLMADKVLRWERAWFPPAIMGVVSLVFLIIYYLDPSVLSGV
SCFVMFLCLADYLVPI LAPRIFGSNKWTEQQRFHEICSNLVKTRRRAVGWKRLFTLKEEKPKMYFMT
MIVSLAAVAWVGQVHNLLLTYLIVTSLLLLPLNQHGIILKYIGMAKREINKLLKQKEKKNE

TRTRPLEQKLISEEDLAANDILDYKDDDDKV



[View online »](#)

Chromatograms: https://cdn.origene.com/chromatograms/mk6323_h11.zip

Restriction Sites: SgfI-MluI

Cloning Scheme:



ACCN: NM_015161

ORF Size: 609 bp

OTI Disclaimer: The molecular sequence of this clone aligns with the gene accession number as a point of reference only. However, individual transcript sequences of the same gene can differ through naturally occurring variations (e.g. polymorphisms), each with its own valid existence. This clone is substantially in agreement with the reference, but a complete review of all prevailing variants is recommended prior to use. [More info](#)

OTI Annotation: This clone was engineered to express the complete ORF with an expression tag. Expression varies depending on the nature of the gene.

Components: The ORF clone is ion-exchange column purified and shipped in a 2D barcoded Matrix tube containing 10ug of transfection-ready, dried plasmid DNA (reconstitute with 100 ul of water).

Reconstitution Method:

1. Centrifuge at 5,000xg for 5min.
2. Carefully open the tube and add 100ul of sterile water to dissolve the DNA.
3. Close the tube and incubate for 10 minutes at room temperature.
4. Briefly vortex the tube and then do a quick spin (less than 5000xg) to concentrate the liquid at the bottom.
5. Store the suspended plasmid at -20°C. The DNA is stable for at least one year from date of shipping when stored at -20°C.

Note: Plasmids are not sterile. For experiments where strict sterility is required, filtration with 0.22um filter is required.

RefSeq: [NM_015161.3](#)

RefSeq Size: 2280 bp

RefSeq ORF: 612 bp

Locus ID: 23204

UniProt ID: [Q15041](#)

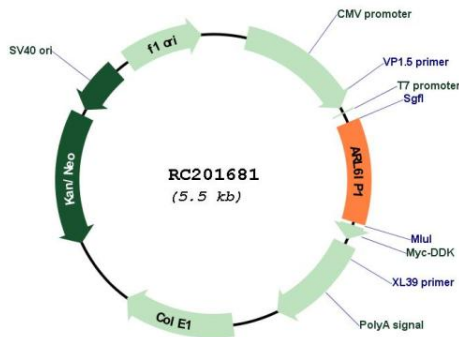
Cytogenetics: 16p12.3

Protein Families: Transmembrane

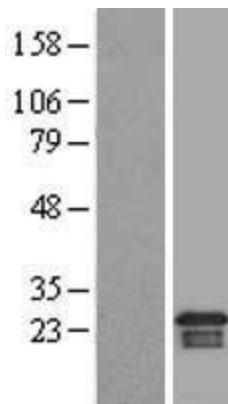
MW: 23.4 kDa

Gene Summary: This gene belongs to the ARL6ip family and encodes a transmembrane protein that is predominantly localized to intracytoplasmic membranes. It is highly expressed in early myeloid progenitor cells and thought to be involved in protein transport, membrane trafficking, or cell signaling during hematopoietic maturation. Mutations in this gene are associated with spastic paraplegia 61 (SPG61). Alternatively spliced transcript variants have been found for this gene. [provided by RefSeq, Sep 2015]

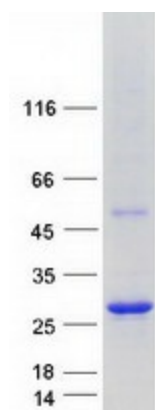
Product images:



Circular map for RC201681



Western blot validation of overexpression lysate (Cat# [LY414753]) using anti-DDK antibody (Cat# [TA50011-100]). Left: Cell lysates from untransfected HEK293T cells; Right: Cell lysates from HEK293T cells transfected with RC201681 using transfection reagent MegaTran 2.0 (Cat# [TT210002]).



Coomassie blue staining of purified ARL6IP1 protein (Cat# [TP301681]). The protein was produced from HEK293T cells transfected with ARL6IP1 cDNA clone (Cat# RC201681) using MegaTran 2.0 (Cat# [TT210002]).