

Product datasheet for **RC201677**

LANPL (ANP32E) (NM_030920) Human Tagged ORF Clone

Product data:

Product Type:	Expression Plasmids
Product Name:	LANPL (ANP32E) (NM_030920) Human Tagged ORF Clone
Tag:	Myc-DDK
Symbol:	LANPL
Synonyms:	LANP-L; LANPL
Mammalian Cell Selection:	Neomycin
Vector:	pCMV6-Entry (PS100001)
E. coli Selection:	Kanamycin (25 ug/mL)
ORF Nucleotide Sequence:	>RC201677 ORF sequence Red=Cloning site Blue=ORF Green=Tags(s)

TTTTGTAATACGACTCACTATAGGGCGCCGGGAATTCGTCGACTGGATCCGGTACCGAGGAGATCTGCC
GCC**CGATCGCC**

ATGGAGATGAAGAAGAAGATTAACCTGGAGTTAAGGAACAGATCCCCGGAGGAGGTGACAGAGTTAGTCC
TTGATAATTGCCTGTGTGCAATGGGAAATTGAAGGCCGAATGATACTTTCAAAGAACTAGAATTTCT
GAGTATGGCTAATGTGGAAGTAAGTTCGCTGGCCCGCTTCCAGCTAAATAAACTTCGAAAATTGGAG
CTTAGTGATAATAAATTTCTGGAGGCTTGAAGTCTGGCAGAGAAATGTCAAATCTTACCTACCTCA
ATCTGAGTGAAACAAAATAAAGATCTCAGTACAGTAGAAGCTCTGCAAAATCTTAAAAATTTGAAAAG
TCTTGACCTGTTAACTGTGAGATCACAAACCTGGAAGATTATAGAGAAAGTATTTTGAAGTACTGCAG
CAAATCACATACTTAGATGGATTTGATCAGGAGGATAATGAAGCGCCGGACTCTGAAGAGGAGGATGATG
AGGATGGAGATGAAGATGATGAAGAGGAAGAGGAAAATGAAGCTGGTCCACCGGAAGGATATGAGGAAGA
GGAGGAGGAAGAGGAAGAGGAGGATGAGGATGAGGATGAAGATGAAGATGAAGCAGGTTCCAGAGTTGGGA
GAGGGAGAAGAGGAAGTGGCCCTCATACTTAATGAAAGAAGAAATTCAGGATGAAGAAGATGATGATG
ACTATGTTGAAGAAGGGGAAGAAGAGGAAGAAGGAAGAAGGAGGTCTTCGAGGGGAGAAGAGGAAACG
AGATGCTGAAGACGATGGAGAGGAAGAAGATGAC

ACGCGTACGCGGCCGCTCGAGCAGAAACTCATCTCAGAAGAGGATCTGGCAGCAAATGATATCCTGGATT
ACAAGGATGACGACGATAAGGTTTAA



[View online »](#)

Protein Sequence: >RC201677 protein sequence
 Red=Cloning site Green=Tags(s)

MEMKKKINLELRNRSPEEVTTELVDNCLCVNGEIEGLNDTFKELEFLSMANVELSSLARLPSLNKLRKLE
 LSDNIIISGGLEVLAEKCPNLTYLNLSGNKIKDLSTVEALQNLKSLDLFNCEITNLEDYRESIFELLQ
 QITYLDGFDQEDNEAPDSEEEDEDEDGDEDEEEEEENEAGPPEGYEEEEEEEEDEDEDEDEAGSELG
 EGEEEVGLSYLMKEEIQDEEDDDDYVEEGEEEEEEEEEGGLRGEKRKRDAEDDGEEEDD

TRTRPLEQKLISEEDLAANDILDYKDDDDKV

Chromatograms: https://cdn.origene.com/chromatograms/mk6004_a03.zip

Restriction Sites: SgfI-MluI

Cloning Scheme:



ACCN: NM_030920

ORF Size: 804 bp

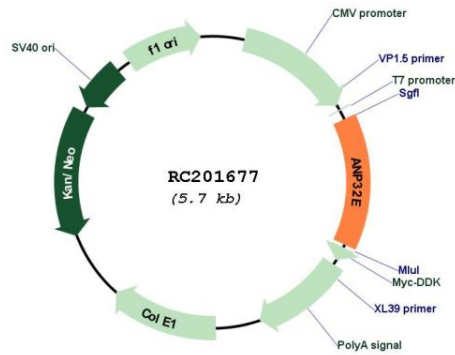
OTI Disclaimer: The molecular sequence of this clone aligns with the gene accession number as a point of reference only. However, individual transcript sequences of the same gene can differ through naturally occurring variations (e.g. polymorphisms), each with its own valid existence. This clone is substantially in agreement with the reference, but a complete review of all prevailing variants is recommended prior to use. [More info](#)

OTI Annotation: This clone was engineered to express the complete ORF with an expression tag. Expression varies depending on the nature of the gene.

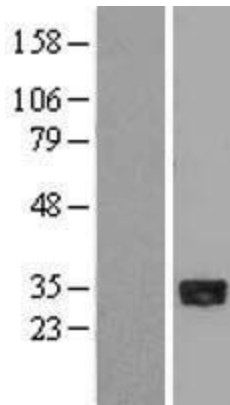
Components: The ORF clone is ion-exchange column purified and shipped in a 2D barcoded Matrix tube containing 10ug of transfection-ready, dried plasmid DNA (reconstitute with 100 ul of water).

Reconstitution Method:	<ol style="list-style-type: none">1. Centrifuge at 5,000xg for 5min.2. Carefully open the tube and add 100ul of sterile water to dissolve the DNA.3. Close the tube and incubate for 10 minutes at room temperature.4. Briefly vortex the tube and then do a quick spin (less than 5000xg) to concentrate the liquid at the bottom.5. Store the suspended plasmid at -20°C. The DNA is stable for at least one year from date of shipping when stored at -20°C.
RefSeq:	NM_030920.1
RefSeq Size:	3467 bp
RefSeq ORF:	807 bp
Locus ID:	81611
UniProt ID:	Q9BTT0
Cytogenetics:	1q21.2
Domains:	LRR
Protein Families:	Druggable Genome
MW:	30.7 kDa
Gene Summary:	<p>Histone chaperone that specifically mediates the genome-wide removal of histone H2A.Z/H2AFZ from the nucleosome: removes H2A.Z/H2AFZ from its normal sites of deposition, especially from enhancer and insulator regions. Not involved in deposition of H2A.Z/H2AFZ in the nucleosome. May stabilize the evicted H2A.Z/H2AFZ-H2B dimer, thus shifting the equilibrium towards dissociation and the off-chromatin state (PubMed:24463511). Inhibits activity of protein phosphatase 2A (PP2A). Does not inhibit protein phosphatase 1. May play a role in cerebellar development and synaptogenesis.[UniProtKB/Swiss-Prot Function]</p>

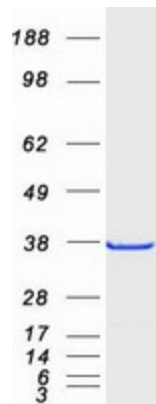
Product images:



Circular map for RC201677



Western blot validation of overexpression lysate (Cat# [LY403095]) using anti-DDK antibody (Cat# [TA50011-100]). Left: Cell lysates from untransfected HEK293T cells; Right: Cell lysates from HEK293T cells transfected with RC201677 using transfection reagent MegaTran 2.0 (Cat# [TT210002]).



Coomassie blue staining of purified ANP32E protein (Cat# [TP301677]). The protein was produced from HEK293T cells transfected with ANP32E cDNA clone (Cat# RC201677) using MegaTran 2.0 (Cat# [TT210002]).