

Product datasheet for **RC201675**

SPATA5L1 (NM_024063) Human Tagged ORF Clone

Product data:

Product Type:	Expression Plasmids
Product Name:	SPATA5L1 (NM_024063) Human Tagged ORF Clone
Tag:	Myc-DDK
Symbol:	SPATA5L1
Mammalian Cell Selection:	Neomycin
Vector:	pCMV6-Entry (PS100001)
E. coli Selection:	Kanamycin (25 ug/mL)



[View online »](#)

**ORF Nucleotide
Sequence:**

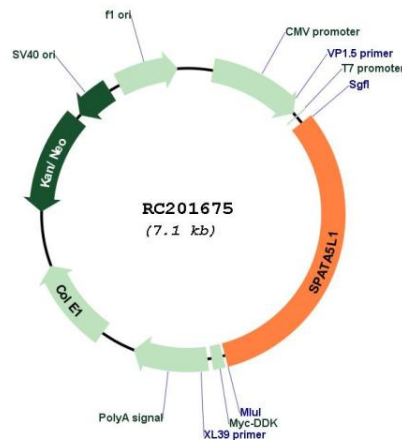
>RC201675 representing NM_024063
 Red=Cloning site Blue=ORF Green=Tags(s)

TTTTGTAATACGACTCACTATAGGGCGGCCGGGAATTCGTCGACTGGATCCGGTACCGAGGAGATCTGCC
 GCC**CGCATCGCC**

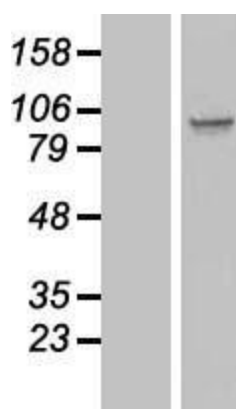
ATGGCTCCGGACTCGGATCCCTTCCTGAAGGGCCGCTCTTAAAGCTGCTACCCTTAGACGCTAGAGACC
 GGGCACCACAGCGCTGCCGCTGGGCCCGGCCCTCCACGCCCTGGGCGCGCTTGGCTCGGCAGT
 GAAGATCTCGCTACCCGACGGCGCTCCTGCCTGCACTGCCTGGCCTCGGCGGACGGAGCGGACGGC
 TTTGTGCAGCTGGACCCGCTGTGCGCGAGCCCCGGGGCGCGGTGGGGCGTTCGAGATCCCGGAGGAGTC
 TCAGCCTGAATCGCCTCCTAGTGCCCTGTCCGCCCTGCGGCGCGTCCCGTGTGGCCGGTGTGCG
 AGAGCGGGCAGGCGCCCGGTGCCGGAATACAGCCGCGGTGCTGGAGGCGGCACAGGAGCTGCTGAGA
 AACCGACCGATCCCTGGGCCACGTGGTGGTCCGCTCCGCCAGGCGCTCCTGGCCTGGTGGCTGCCTTGC
 ACATCGTCGGCGGACGCCAGTCCCGATCCCGCTGGGCTGGTCAACCCCTCGTACCCGCGTCAGCCTTGG
 CGGGGAGCCTCCGTCGGAAGCCAGCCGACGCCGAGGTGCCCTGGGAGGTCTTTCGGAGCGGCCGAC
 TCGCTGCGGGAGCTCCTCCGCTCCCGCTCCGCTACCCGCGGCCCTGACCGCGCTGGGCTTAGCGGTGC
 CTCGCGGGGTGCTCCTGGCGGGGCCCCCGGAGTGGGCAAGACCCAGCTGGTGCAGGCCGTGGCGCGCA
 GGCGGGCGCGGAGCTGCTGGCAGTCAGCGCCCCGGCGCTGCAGGGTTCGGGCTGGGGAGACCGAGGAG
 AACGTGCGGGGGTCTTCCAGCGCGCCCGGAACTGGCCAGCCGCGGACCCAGCCTCCTCTTCTGGACG
 AGATGGACGCCTGTGTCCCCAGCGGGGAGTCGAGCACCCGAGAGCCGCTAGTGGCCAGGTGTTGAC
 GCTGCTGGACGGCGCCAGTGGGGACCGGAGGTGCTGGTGTGGGAGCCACTAACCGCCGGACGCTCTA
 GACCCAGCGCTGCGTAGACCCGGGAGATTTGACCGAGAGGTGGTCACTGGGACTCCACACTTAAACAAA
 GAAAGGAAATTCGCAAGTGATTACCTCGAAGATGCCATCTCCAGTCATGTTGATTTGGCCTTCTTGC
 AGAAATGACAGTTGGCTATGTTGGTGCCGACTGACAGCACTCTGTAGGGAGGCTGCCATGCATGCCCTC
 TTCATAGTGAGAAGAACCAGGACAATCCTGTGATTGATGAAATAGACTTCCTTGAAGCTTTTAAAAATA
 TTCAGCCCTCATCGTTTCGAAGCGTCATTGGATTAATGGATATCAAGCCTGTTGACTGGGAGGAGATTGG
 TGGCCTTGAAGATGTAAGTGAAGTAAACAGAGCATTGAGTGGCCTCTGAAATTCCTTGGGAATTT
 GTTAGAATGGGCTGACACAACCAAGGGAGTTCTCCTATGGGCCCTGGATGTGCTAAAACCACTC
 TGGTGAGGGCCCTGGCCACAAGCTGCTACTGCTCTTTCGTTTCAGTGAGTGGAGCTGATCTGTTTTACC
 GTTTGTTGGAGATTAGAAAAAGTGTGTCTCAGATATTCGACAAGCAAGAGCAAGCACTCCAGCAATT
 TTGTTTTGGATGAAATTGATTCATCTTGGGAGCTCGCTCAGCCAGCAAGACAGGATGTGATGTTCAAG
 AACGAGTCTTTCTGTTCTCCTGAATGAATTAGATGGTGTGGACTTAAGACAATAGAGAGAAGAGGAAG
 TAAATCAAGTCAACAGGAGTTTCAAGAAGTTTTAACCAGAGTGCATGATTATTGCAGCAACAAATAGA
 CCTGATGTGTAGATACTGCTTTGTTACGACCTGGAAGATTAGATAAGATCATCTATATCCACCTCCAG
 ATCACAAGGGCAGGCTTTCTATTTTAAAGTCTGTACAAAAACCATGCCAATAGGGCCTGATGCTCCTT
 AGAAAACCTCGCAGCAGAAACCTGTTTTTTCTGGAGCTGATCTTAGAAACCTCTGCACAGAAGCTGCT
 TTGCTGGCTCTGCAAGAAAATGGACTAGACGCAACTACAGTGAACAAGAGCACTTTCTAAAATCACTTA
 AGACTGTAAAACCGTCGTTAAGTTGCAAGGACTTGGCTTATATGAAAACCTATTTAAGAAAAGAAGGATT
 TTCTAACGTGGAAGGTATT

ACGCGTACGCGGCCGCTCGAGCAGAAACTCATCTCAGAAGAGGATCTGGCAGCAATGATATCCTGGATT
 ACAAGGATGACGACGATAAGGTTTAA

Components:	The ORF clone is ion-exchange column purified and shipped in a 2D barcoded Matrix tube containing 10ug of transfection-ready, dried plasmid DNA (reconstitute with 100 ul of water).
Reconstitution Method:	<ol style="list-style-type: none"> 1. Centrifuge at 5,000xg for 5min. 2. Carefully open the tube and add 100ul of sterile water to dissolve the DNA. 3. Close the tube and incubate for 10 minutes at room temperature. 4. Briefly vortex the tube and then do a quick spin (less than 5000xg) to concentrate the liquid at the bottom. 5. Store the suspended plasmid at -20°C. The DNA is stable for at least one year from date of shipping when stored at -20°C.
Note:	Plasmids are not sterile. For experiments where strict sterility is required, filtration with 0.22um filter is required.
RefSeq:	<u>NM_024063.1, NP_076968.1</u>
RefSeq Size:	2522 bp
RefSeq ORF:	2262 bp
Locus ID:	79029
UniProt ID:	<u>Q9BVQ7</u>
Cytogenetics:	15q21.1
Domains:	AAA, AAA
MW:	80.5 kDa

Product images:


Circular map for RC201675



Western blot validation of overexpression lysate (Cat# [LY411380]) using anti-DDK antibody (Cat# [TA50011-100]). Left: Cell lysates from untransfected HEK293T cells; Right: Cell lysates from HEK293T cells transfected with RC201675 using transfection reagent MegaTran 2.0 (Cat# [TT210002]).