

## Product datasheet for RC201674

### PDLIM1 (NM\_020992) Human Tagged ORF Clone

#### Product data:

Product Type:	Expression Plasmids
Product Name:	PDLIM1 (NM_020992) Human Tagged ORF Clone
Tag:	Myc-DDK
Symbol:	PDLIM1
Synonyms:	CLIM1; CLP-36; CLP36; hCLIM1; HEL-S-112
Mammalian Cell Selection:	Neomycin
Vector:	pCMV6-Entry (PS100001)
E. coli Selection:	Kanamycin (25 ug/mL)
ORF Nucleotide Sequence:	>RC201674 ORF sequence Red=Cloning site Blue=ORF Green=Tags(s)

TTTTGTAATACGACTCACTATAGGGCGGCCGGAATTCGTCGACTGGATCCGGTACCGAGGAGATCTGCC  
GCC**CGATCGCC**

ATGACCACCCAGCAGATAGACCTCCAGGGCCCGGGCCGTGGGGCTTCGCCTCGTGGCGGCAAGGACT  
TCGAGCAGCCTCTCGCCATTTCCCGGTCACTCCTGGAAGCAAGGCGGCTCTAGCTAATTTATGTATTGG  
AGATGTAATCACAGCCATTGATGGGAAAATACTAGCAATATGACACACTTGAAGCTCAGAACAGAATC  
AAAGGCTGCACAGACAATTGACTCTCACTGTAGCCAGATCTGAACATAAAGTCTGGTCTCCTCTGGTGA  
CGGAGGAAGGGAAGCGTCATCCATAAAGATGAATTTAGCCTCTGAACCCAGGAGGTCTGCACATAGG  
AAGCGCCCAACCGAAGTGCCATGCCCTTTACCGCCTCGCCTCCAGCACTACTGCCAGGGTCATC  
ACAAACAGTACAACAACCCAGCTGGCCTCTACTCTTCTGAAAATATCTCCAACCTCAACAATGCCCTGG  
AGTCAAAGACTGCTGCCAGCGGGTGGAGGCGAACAGCAGACCCTTAGACCATGCTCAGCCTCAAGCAG  
CCTTGTCATCGACAAAGAATCTGAAGTTTACAAGATGCTTCAGGAGAAACAGGAGTTGAATGAGCCCCG  
AAACAGTCCACGTCTTTCTTGGTTTTGCAGGAAATCCTGGAGTCTGAAGAAAAAGGGATCCCAACAAGC  
CCTCAGGATTCAGAAGTGTTAAAGCTCCTGTCACTAAAGTGGCTGCGTCGATTGGAATGCTCAGAAGTT  
GCCTATGTGTGACAAATGTGGCACTGGGATTGTTGGTGTGTTGTGAAGCTGCGGACCGTCACCGCCAC  
CCTGAGTGTTATGTGTGCACTGACTGTGGCACCAACCTGAAACAGAAGGGCCATTTCTTTGTGGAGGATC  
AAATCTACTGTGAGAAGCATGCCCGGGAGCGAGTACACCACCTGAGGGTTATGAAGTGGTCACTGTGTT  
CCCAAG

**ACGCGT**ACGCGGCCGCTCGAGCAGAACTCATCTCAGAAGAGGATCTGGCAGCAATGATATCCTGGATT  
ACAAGGATGACGACGATAAGGTTTAA



[View online »](#)

**Protein Sequence:** >RC201674 protein sequence  
Red=Cloning site Green=Tags(s)

MTTQQIDLQGGPWGFRLVGGKDFEQPLAISRVTPGSKAALANLCIGDVITAIDGENTSMTHLEAQNRI  
 KGCTDNLTLTVARSEHKVWSPLVTEEGKRHPYKMNLASEPQEVLHIGSAHNRSAMPFTASPASSTARVI  
 TNQYNNPAGLYSSENI SNFNNALESKTAASGVEANSRPLDHAQPPSSLVIDKESEVYKMLQEKQELNEPP  
 KQSTSFLVLQEILESEEKGDPNKPSGFRSVKAPVTKVAASIGNAQKLPMDCKCGTGIVGVFVKLRDRHRH  
 PECYVCTDCGTNLKQKGHFFVEDQIYCEKHARERTPPEGYEVVTVFPK

TRTRPLEQKLISEEDLAANDILDYKDDDDKV

**Chromatograms:** [https://cdn.origene.com/chromatograms/mk6001\\_h05.zip](https://cdn.origene.com/chromatograms/mk6001_h05.zip)

**Restriction Sites:** SgfI-MluI

**Cloning Scheme:**

Cloning sites used for ORF Shuttling:



\* The last codon before the Stop codon of the ORF

**ACCN:** NM\_020992

**ORF Size:** 987 bp

**OTI Disclaimer:** The molecular sequence of this clone aligns with the gene accession number as a point of reference only. However, individual transcript sequences of the same gene can differ through naturally occurring variations (e.g. polymorphisms), each with its own valid existence. This clone is substantially in agreement with the reference, but a complete review of all prevailing variants is recommended prior to use. [More info](#)

**OTI Annotation:** This clone was engineered to express the complete ORF with an expression tag. Expression varies depending on the nature of the gene.

**Components:** The ORF clone is ion-exchange column purified and shipped in a 2D barcoded Matrix tube containing 10ug of transfection-ready, dried plasmid DNA (reconstitute with 100 ul of water).

**Reconstitution Method:**

1. Centrifuge at 5,000xg for 5min.
2. Carefully open the tube and add 100ul of sterile water to dissolve the DNA.
3. Close the tube and incubate for 10 minutes at room temperature.
4. Briefly vortex the tube and then do a quick spin (less than 5000xg) to concentrate the liquid at the bottom.
5. Store the suspended plasmid at -20°C. The DNA is stable for at least one year from date of shipping when stored at -20°C.

**Note:** Plasmids are not sterile. For experiments where strict sterility is required, filtration with 0.22um filter is required.

**RefSeq:** [NM\\_020992.4](#)

**RefSeq Size:** 1598 bp

**RefSeq ORF:** 990 bp

**Locus ID:** 9124

**UniProt ID:** [O00151](#)

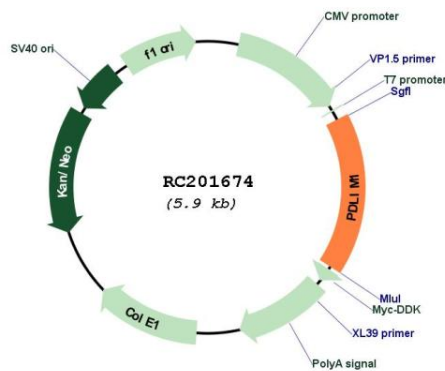
**Cytogenetics:** 10q23.33

**Domains:** PDZ, LIM, ZM

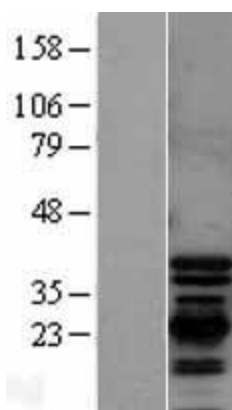
**MW:** 36.1 kDa

**Gene Summary:** This gene encodes a member of the enigma protein family. The protein contains two protein interacting domains, a PDZ domain at the amino terminal end and one to three LIM domains at the carboxyl terminal. It is a cytoplasmic protein associated with the cytoskeleton. The protein may function as an adapter to bring other LIM-interacting proteins to the cytoskeleton. Pseudogenes associated with this gene are located on chromosomes 3, 14 and 17. [provided by RefSeq, Oct 2012]

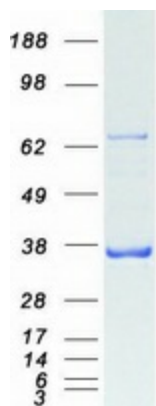
### Product images:



Circular map for RC201674



Western blot validation of overexpression lysate (Cat# [LY402823]) using anti-DDK antibody (Cat# [TA50011-100]). Left: Cell lysates from untransfected HEK293T cells; Right: Cell lysates from HEK293T cells transfected with RC201674 using transfection reagent MegaTran 2.0 (Cat# [TT210002]).



Coomassie blue staining of purified PDLIM1 protein (Cat# [TP301674]). The protein was produced from HEK293T cells transfected with PDLIM1 cDNA clone (Cat# RC201674) using MegaTran 2.0 (Cat# [TT210002]).