

Product datasheet for **RC201671**

CSN1 (GPS1) (NM_004127) Human Tagged ORF Clone

Product data:

Product Type:	Expression Plasmids
Product Name:	CSN1 (GPS1) (NM_004127) Human Tagged ORF Clone
Tag:	Myc-DDK
Symbol:	CSN1
Synonyms:	COPS1; CSN1; SGN1
Mammalian Cell Selection:	Neomycin
Vector:	pCMV6-Entry (PS100001)
E. coli Selection:	Kanamycin (25 ug/mL)



[View online »](#)

ORF Nucleotide Sequence:

>RC201671 ORF sequence
 Red=Cloning site Blue=ORF Green=Tags(s)

TTTTGTAATACGACTCACTATAGGGCGGCCGGAATTCGTCGACTGGATCCGGTACCGAGGAGATCTGCC
 GCC**GCGATCGCC**

ATGCCGCTGCCGTTTCAGGTGTTAACTTGCAGGGGGCCGTGGAGCCCATGCAGATCGACTGGACCCCC
 AGGAAGACCCCGAGAATGCACCTGACGTCAACTACGTGGTGGAGAACCCAGCCTGGATCTGGAACAGTA
 CGCGGCCAGCTACAGCGCCTGATGCGCATCGAACGGCTGCAGTTCATTGCTGATCACTGCCCCAGCTG
 CGGGTGGAGGCCCTGAAGATGGCCCTCTCTTCGTGCAGAGAACCTTTAACGTGGACATGTACGAGGAGA
 TCCACCGCAAGCTCTCAGAGGCCACCAGGTCTCTCTCAGGGAGCTGCAGAACGCACCCGACGCCATCCC
 TGAGAGCGGCGTGGAGCCCCAGCCCTGGACACGGCCTGGGTGGAGGCCACGCGGAAGAAGGCGTCTG
 AAGCTGGAGAAGCTGGACACAGACCTGAAGAACTACAAGGGCAACTCCATCAAAGAGAGCATCCGGCGG
 GCCACGACGACCTGGGCGACCACTACCTGGACTGTGGGACCTCAGCAACGCCCTCAAGTCTATCCCG
 GGCCCGGACTACTGCACCAGCGCAAAACAGTCAACATGTGCCTCAATGTCATCAAGGTCAAGCTCAGCTC
 TACTTGCAGAATTGGTCTCATGTGCTCAGCTACGTACGCAAGGCTGAGTCCACCCAGAGATTGCCGAGC
 AGCGAGGAGAGCGTGCAGCCAGACCCAGGCCATCCTCACCAAGCTCAAGTGTGCCCGAGCTTGGCAGA
 GCTGGCCGCCAGGAAGTACAAGCAGGCTGCCAAGTGCCTCCTGCTGGCTTCTTTGATCACTGTGACTTC
 CCTGAGCTGTGTCCCCAGCAACGTGGCCATCTACGGTGGCCTGTGCGCCTTGGCTACCTTTGACCGGC
 AGGAGCTGCAGCGCAATGTCATCTCCAGCAGCTCCTTCAAGTTGTTCTTGGAGCTGGAGCCACAGTCCG
 AGACATCATCTTCAAATTCTACGAGTCCAAGTACGCCCTCATGTCTCAAGATGCTGGACGAGATGAAGGAC
 AACCTGCTCCTGGACATGATCTGGCCCCCATGTCAGGACCTGTACACCCAGATTCCGAACCGTGCC
 TCATCCAGTATTTAGCCCTACGTGTGACGCCGACATGCATAGGATGGCGGCAGCCTTCAATACCCAGGT
 GGCCGCCCTGGAGGACGAGCTGACGCAGCTAATCCTGGAGGGGCTGATCAGTGCCCGTGTGGACTCACAC
 AGCAAGATCCTATACGCCCGGGACGTGGATCAGCGCAGCACCACTTTGAGAACTCTGTTGATGGCA
 AGGAGTCCAGCGCCGCGCAAGGCCATGATGCTGCGGGCAGCTGTGCTCCGCAACCAGATCCATGTCAA
 GTCCCCGCCAGAGAAGGGAGCCAGGGGAGCTGACTCCAGCCAACAGCCAGTCCCGGATGAGCACCAAC
 ATG

ACGCGTACGCGGCCGCTCGAGCAGAAACTCATCTCAGAAGAGGATCTGGCAGCAAATGATATCCTGGATT
 ACAAGGATGACGACGATAAGGTTTAA

Protein Sequence:

>RC201671 protein sequence
 Red=Cloning site Green=Tags(s)

MPLPVQVFNLQGAPEMQIDVDPQEDPQNAPDVNYVVENPSLDLEQYAASYSGLMRIERLQFIADHCPTL
 RVEALKMALSFVQRTFNVDMYEEIHRKLESEATRSSLRELQNPDAIPESGVEPPALDTAWVEATRKALL
 KLEKLDLTKNYKGNISIKESIRRGHDDLGDHYLDCGDLNALKCYSRARDYCTSAKHVINMCLNVIKVS
 YLQNWVSHVLSYVSKAESTPEIAEQRGERDSQTQAILTKLKCAAGLAELAARKYKQAAKLLLASFDHCF
 PELLSPSNVAIYGGLCALATFDRQELQRNVISSSSFKLFLELEPQVRDIIFKFYESKYASCLKMLDEM
 NLLLDMYLAPHVRTLYTQIRNRALIQYFSPYVSADMRMAAFAFNTTVALEDEL TQLILEGLISARVDSH
 SKILYARDVDQRSTTFEKSLLMGKEFQRRAKAMMLRAAVLRNQIHVKSPPREGSQGELTPANSQSRMSTN
 M

TRTRPLEQKLISEEDLAANDILDYKDDDDKV

Chromatograms:

https://cdn.origene.com/chromatograms/mk6541_e06.zip

Restriction Sites:

Sgfl-Mlul

Cloning Scheme:


ACCN: NM_004127

ORF Size: 1473 bp

OTI Disclaimer: The molecular sequence of this clone aligns with the gene accession number as a point of reference only. However, individual transcript sequences of the same gene can differ through naturally occurring variations (e.g. polymorphisms), each with its own valid existence. This clone is substantially in agreement with the reference, but a complete review of all prevailing variants is recommended prior to use. [More info](#)

OTI Annotation: This clone was engineered to express the complete ORF with an expression tag. Expression varies depending on the nature of the gene.

Components: The ORF clone is ion-exchange column purified and shipped in a 2D barcoded Matrix tube containing 10ug of transfection-ready, dried plasmid DNA (reconstitute with 100 ul of water).

Reconstitution Method:

1. Centrifuge at 5,000xg for 5min.
2. Carefully open the tube and add 100ul of sterile water to dissolve the DNA.
3. Close the tube and incubate for 10 minutes at room temperature.
4. Briefly vortex the tube and then do a quick spin (less than 5000xg) to concentrate the liquid at the bottom.
5. Store the suspended plasmid at -20°C. The DNA is stable for at least one year from date of shipping when stored at -20°C.

Note: Plasmids are not sterile. For experiments where strict sterility is required, filtration with 0.22um filter is required.

RefSeq: [NM_004127.6](#)

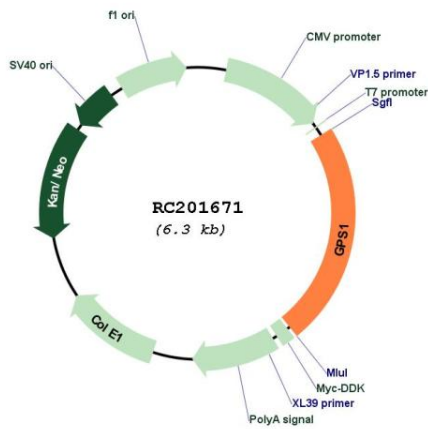
RefSeq Size: 1880 bp

RefSeq ORF: 1476 bp

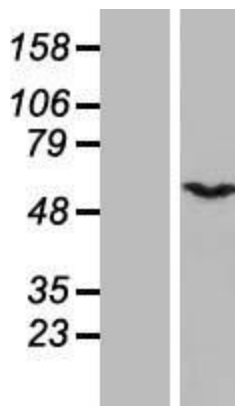
Locus ID: 2873

UniProt ID: [Q13098](#)
 Cytogenetics: 17q25.3
 Domains: PCI
 Protein Families: Druggable Genome
 MW: 55.5 kDa
 Gene Summary: This gene is known to suppress G-protein and mitogen-activated signal transduction in mammalian cells. The encoded protein shares significant similarity with Arabidopsis FUS6, which is a regulator of light-mediated signal transduction in plant cells. [provided by RefSeq, Mar 2016]

Product images:



Circular map for RC201671



Western blot validation of overexpression lysate (Cat# [LY418202]) using anti-DDK antibody (Cat# [TA50011-100]). Left: Cell lysates from untransfected HEK293T cells; Right: Cell lysates from HEK293T cells transfected with RC201671 using transfection reagent MegaTran 2.0 (Cat# [TT210002]).