

Product datasheet for **RC201670**

Plastin L (LCP1) (NM_002298) Human Tagged ORF Clone

Product data:

Product Type:	Expression Plasmids
Product Name:	Plastin L (LCP1) (NM_002298) Human Tagged ORF Clone
Tag:	Myc-DDK
Symbol:	Plastin L
Synonyms:	CP64; HEL-S-37; L-PLASTIN; LC64P; LPL; PLS2
Mammalian Cell Selection:	Neomycin
Vector:	pCMV6-Entry (PS100001)
E. coli Selection:	Kanamycin (25 ug/mL)



[View online »](#)

ORF Nucleotide Sequence:

>RC201670 ORF sequence
 Red=Cloning site Blue=ORF Green=Tags(s)

TTTTGTAATACGACTCACTATAGGGCGGCCGGGAATTCGTCGACTGGATCCGGTACCGAGGAGATCTGCC
 GCC**CGGATCGCC**

ATGGCCAGAGGATCAGTGTCCGATGAGGAAATGATGGAGCTCAGAGAAGCTTTTGCCAAAGTTGATACTG
 ATGGCAATGGATACATCAGCTTCAATGAGTTGAATGACTTGTTCAAGGCTGCTTGCTTGCCTTTGCCTGG
 GTATAGAGTACGAGAAATTACAGAAAACCTGATGGCTACAGGTGATCTGGACCAAGATGGAAGGATCAGC
 TTTGATGAGTTTATCAAGATTTTCCATGGCCTAAAAAGCACAGATGTTGCCAAGACCTTTAGAAAAGCAA
 TCAATAAGAAGGAAGGGATTTGTGCAATCGGTGGTACTTCAGAGCAGTCTAGCGTTGGCACCCAACACTC
 CTATTCAGAGGAAGAAAAGTATGCCTTTGTCAACTGGATAAACAAAGCCCTGGAAAATGATCCTGATTGT
 CGGCATGTCATCCCAATGAACCCAAACACGAATGATCTTTAATGCTGTGGAGATGGCATTGCCTTT
 GTAAAATGATCAACCTGTCAGTGCCAGACACAATTGATGAAAGAACAATCAACAAAAGAAGCTAACCCC
 TTTACCATTAGGAAAATCTGAACTTGGCTCTGAACTCTGCCTCAGCCATCGGGTGCCATGTGGTCAAC
 ATAGGGGCTGAGGACCTGAAGGAGGGGAAGCCTTATCTGGTCTGGGACTTCTGTGGCAAGTCATCAAGA
 TTGGGTTGTTGCTGACATTGAACTCAGCAGAAAATGAAGCTCTGATTGCTCTTTTGAGAGAGGTGAGAG
 CCTGGAGGATTTGATGAAACTCTCCCTGAAGAGCTTTGCTGAGGTGGGCTAATTACCACCTGGAAAAT
 GCAGGCTGCAACAAAATTGGCAACTTCAGTACTGACATCAAGGACTCAAAAGCTTATTACCACCTGCTTG
 AGCAGGTGGCTCCAAAAGGAGATGAAGAAGGTGTTCTGCTGTTGTTATTGACATGTCAGGACTCGGGGA
 GAAGGATGACATCCAGAGGGCAGAATGCATGCTGCAGCAGGCGGAGAGGCTGGGCTGCCGGCAGTTTGT
 ACAGCCACAGATGTTGTCCGAGGGAACCCCAAGTTGAACTTGGCTTTTATTGCCAACCTCTTTAACAGAT
 ACCCTGCCCTGCACAAACCAGAGAACCAGGACATTGACTGGGGGGCTTTGAAGGTGAGACGAGAGAAGA
 GCGGACATTTAGGAACTGGATGAACTCCCTGGGTGTTAACCTCGAGTCAATCATTGTACAGTGACTTA
 TCAGATGCCCTGGTCATCTTCCAGCTCTATGAAAAGATCAAAGTTCTGTTGACTGGAACAGAGTAAACA
 AACCGCCATACCCAAACTGGGAGGCAATGAAGAAGCTTGAGAATTGTAACACGCGGTAGAATTGGG
 GAAGAATCAAGCGAAGTTCTCCCTGGTTGGCATCGGTGGACAAGATCTCAATGAAGGAAACCGCACTCTC
 ACACTGGCCTTGATTTGGCAGCTAATGAGAAGGTATACTGAATATCCTCGAAGAAATGGTGGTGGCC
 AGAAGGTCAATGATGACATTATTGTCAACTGGTGAATGAAACATTGAGGGAAGCAGAGAAAAGTTCATC
 CATCTCTAGTTTCAAGGACCCGAAGATTAGTACAAGTCTGCCTGTTCTGGACCTCATCGATGCCATCCAA
 CCAGTTCATTAACTATGACCTTCTGAAGACAGAAAATCTGAATGATGATGAGAAACTCAACAATGCAA
 AATATGCCATCTCTATGGCCGAAAAATTTGGAGCAAGAGTGTATGCCCTGCCAGAAGACCTGGTTGAAGT
 GAACCCAAAAATGGTCATGACCGTGTGGCTGCCTCATGGGAAAGGAATGAAGAGGGT

ACGCGTACGCGGCCGCTCGAGCAGAAACTCATCTCAGAAGAGGATCTGGCAGCAAATGATATCCTGGATT
 ACAAGGATGACGACGATAAGGTTTAA

Protein Sequence:

>RC201670 protein sequence
 Red=Cloning site Green=Tags(s)

MARGSVSDEEMMELREAFKVDTDGNGYISFNELNDLFKAACLPLPGYRVREITENLMTAGDLDDQDGRIS
 FDEFIKIFHGLKSTDVAKTFRKAINKKEGICAIIGTSEQSSVGTQHSYSEEEKYAFVNWINKALENDPDC
 RHVIPMPNPTNDFNAVGDGIVLCKMINLSVPDTIDERTINKKKLTPFTIQENLNLALNSASAIGCHVVN
 IGAEDLKEGKPYLVLLWQVIKIGLFADIELSRNEALIALREGESLEDLMLKSPEELLRWANYHLEN
 AGCNKIGNFSTDIKDSKAYYHLLQVAPKGDEEGVPAVVIDMSGLREKDDIQRAECMLQQAERLGCRRQFV
 TATDVVRGNPKLNLAFLANLFNRYPALHKPENQDIDWGALEGETREERTFRNWMNSLGVNPRVNHLYSDL
 SDALVIFQLYEKIKVPVDWNRVNPYPKLGGMKKLENCNYAVELGKNQAKFSLVIGGGQDLNEGNRTL
 TLALIWQLMRRYTLNILEEIGGGQKVNDDIIVNWVNETLREAESSISSFKDPKISTSLPVLDLIDAIQ
 PGSINYDLLKTENLNDEKLNNAKYAISMARIGARVYALPEDLVEVNPKMVMVTFACLGMGKMKRV

TRTRPLEQKLISEEDLAANDILDYKDDDDKV

Chromatograms: https://cdn.origene.com/chromatograms/mk6032_h09.zip

Restriction Sites: SgfI-MluI

Cloning Scheme:



ACCN: NM_002298

ORF Size: 1881 bp

OTI Disclaimer: The molecular sequence of this clone aligns with the gene accession number as a point of reference only. However, individual transcript sequences of the same gene can differ through naturally occurring variations (e.g. polymorphisms), each with its own valid existence. This clone is substantially in agreement with the reference, but a complete review of all prevailing variants is recommended prior to use. [More info](#)

OTI Annotation: This clone was engineered to express the complete ORF with an expression tag. Expression varies depending on the nature of the gene.

Components: The ORF clone is ion-exchange column purified and shipped in a 2D barcoded Matrix tube containing 10ug of transfection-ready, dried plasmid DNA (reconstitute with 100 ul of water).

- Reconstitution Method:**
1. Centrifuge at 5,000xg for 5min.
 2. Carefully open the tube and add 100ul of sterile water to dissolve the DNA.
 3. Close the tube and incubate for 10 minutes at room temperature.
 4. Briefly vortex the tube and then do a quick spin (less than 5000xg) to concentrate the liquid at the bottom.
 5. Store the suspended plasmid at -20°C. The DNA is stable for at least one year from date of shipping when stored at -20°C.

Note: Plasmids are not sterile. For experiments where strict sterility is required, filtration with 0.22um filter is required.

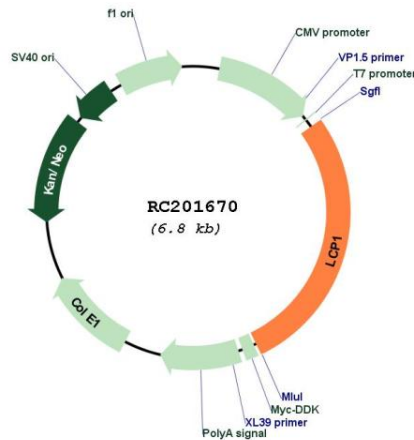
RefSeq: [NM_002298.2](#), [NP_002289.1](#)

RefSeq Size: 3808 bp

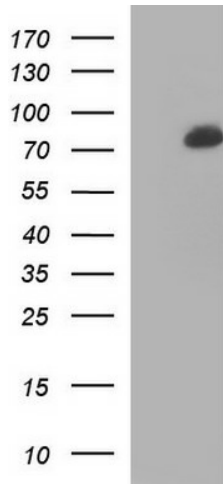
RefSeq ORF: 1884 bp
 Locus ID: 3936
 UniProt ID: [P13796](#)
 Cytogenetics: 13q14.13
 Domains: CH, EFh
 MW: 70.3 kDa

Gene Summary: Plastins are a family of actin-binding proteins that are conserved throughout eukaryote evolution and expressed in most tissues of higher eukaryotes. In humans, two ubiquitous plastin isoforms (L and T) have been identified. Plastin 1 (otherwise known as Fimbrin) is a third distinct plastin isoform which is specifically expressed at high levels in the small intestine. The L isoform is expressed only in hemopoietic cell lineages, while the T isoform has been found in all other normal cells of solid tissues that have replicative potential (fibroblasts, endothelial cells, epithelial cells, melanocytes, etc.). However, L-plastin has been found in many types of malignant human cells of non-hemopoietic origin suggesting that its expression is induced accompanying tumorigenesis in solid tissues. [provided by RefSeq, Jul 2008]

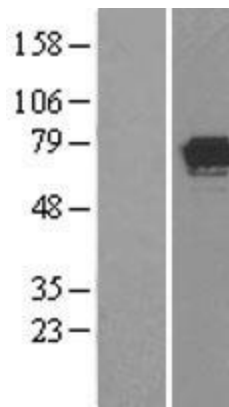
Product images:



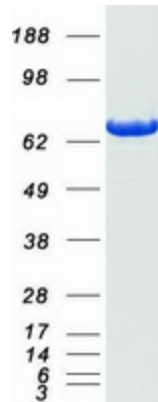
Circular map for RC201670



HEK293T cells were transfected with the pCMV6-ENTRY control (Cat# [PS100001], Left lane) or pCMV6-ENTRY LCP1 (Cat# RC201670, Right lane) cDNA for 48 hrs and lysed. Equivalent amounts of cell lysates (5 ug per lane) were separated by SDS-PAGE and immunoblotted with anti-LCP1 (Cat# [TA590120]). Positive lysates [LY400831] (100ug) and [LC400831] (20ug) can be purchased separately from OriGene.



Western blot validation of overexpression lysate (Cat# [LY400831]) using anti-DDK antibody (Cat# [TA50011-100]). Left: Cell lysates from untransfected HEK293T cells; Right: Cell lysates from HEK293T cells transfected with RC201670 using transfection reagent MegaTran 2.0 (Cat# [TT210002]).



Coomassie blue staining of purified LCP1 protein (Cat# [TP301670]). The protein was produced from HEK293T cells transfected with LCP1 cDNA clone (Cat# RC201670) using MegaTran 2.0 (Cat# [TT210002]).