

Product datasheet for RC201667

C14orf124 (SDR39U1) (NM_020195) Human Tagged ORF Clone

Product data:

Product Type:	Expression Plasmids
Product Name:	C14orf124 (SDR39U1) (NM_020195) Human Tagged ORF Clone
Tag:	Myc-DDK
Symbol:	C14orf124
Synonyms:	C14orf124; HCDI
Mammalian Cell Selection:	Neomycin
Vector:	pCMV6-Entry (PS100001)
E. coli Selection:	Kanamycin (25 ug/mL)
ORF Nucleotide Sequence:	>RC201667 ORF sequence Red=Cloning site Blue=ORF Green=Tags(s)

TTTTGTAATACGACTCACTATAGGGCGGCCGGAATTCGTCGACTGGATCCGGTACCGAGGAGATCTGCC
GCC**CGATCGCC**

ATGCGTGTGCTTGTGGGTGGCGGGACAGGCTTCATTGGGACAGCCCTAACCCAGCTGCTGAATGCCAGAG
GCCACGAAGTGACGTTGGTCTCCCGAAAGCCCGGCCCGGATCACGTGGGATGAGCTCGCTGCATC
GGGGCTGCCGAGCTGCGATGCCCGCTAACCTGGCCGGAGAGAATCCTCAACCCTCTCCGAAGATGG
AATGAAACCTTCAAAAAGAGGTTCTCGCAGCCGCTAGAGACCACCAATTGCTGGCTAAAGCCATCA
CCAAAGCCCCACAACCCCAAGCCTGGGTCTTAGTCACAGGTGTAGCTTACTACCAGCCAGTCTGAC
TGCGGAGTATGATGAAGACAGCCAGGAGGGGACTTTGACTTTTTCTCAACCTCGTAACCAAATGGGAA
GCTGCAGCCAGGCTTCTGGAGATTCTACACGCCAGGTGGTGGTGCCTCAGGGGTTGTGCTGGGCCGTG
GGGGTGGTGCCATGGGCCACATGCTGCTGCCCTTTCGCCTGGGCCTGGGGGGCCCATCGGCTCAGGCCA
CCAATTCTTCCCCTGGATACACATCGGGGACCTGGCAGGAATCCTGACCCATGCCCTTGAAGCAAACCA
GTGCACGGGGTCTGAATGGAGTGGTCCATCCTCCGCCACTAATGCTGAGTTTGCCAGACCTTCGGTG
CTGCCCTGGGCCCGGAGCCTTCATCCCTCTCCCAGCGCTGTGGTGAAGCTGTCTTTGGGCGACAGCG
TGCCATCATGCTGCTGGAGGGCCAGAAGGTGATCCCACGGCGAACACTGGCCACTGGCTACCAAGTATTCC
TCCCAGAGCTAGGGGCTGCCTTAAAGGAAATTGTAGCC

ACGCGTACGCGGGCCGCTCGAGCAGAAACTCATCTCAGAAGAGGATCTGGCAGCAAATGATATCCTGGATT
ACAAGGATGACGACGATAAGGTTTAA



[View online »](#)

Reconstitution Method:

1. Centrifuge at 5,000xg for 5min.
2. Carefully open the tube and add 100ul of sterile water to dissolve the DNA.
3. Close the tube and incubate for 10 minutes at room temperature.
4. Briefly vortex the tube and then do a quick spin (less than 5000xg) to concentrate the liquid at the bottom.
5. Store the suspended plasmid at -20°C. The DNA is stable for at least one year from date of shipping when stored at -20°C.

Note: Plasmids are not sterile. For experiments where strict sterility is required, filtration with 0.22um filter is required.

RefSeq: [NM_020195.2](#), [NP_064580.2](#)

RefSeq Size: 1247 bp

RefSeq ORF: 882 bp

Locus ID: 56948

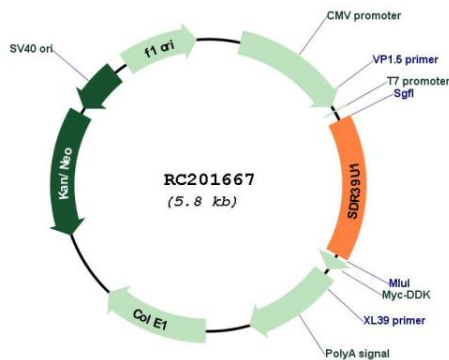
UniProt ID: [Q9NRG7](#)

Cytogenetics: 14q12

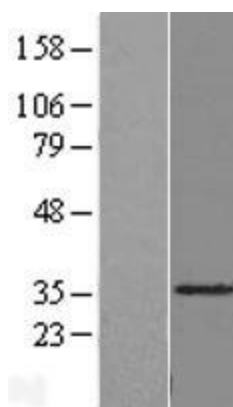
MW: 31.1 kDa

Gene Summary: This gene encodes a member of the short-chain dehydrogenases/reductases (SDR) superfamily, which includes both classical and extended types. The encoded protein represents an extended type, with similarity to epimerases. Alternatively spliced transcript variants that encode different protein isoforms have been described. [provided by RefSeq, Mar 2014]

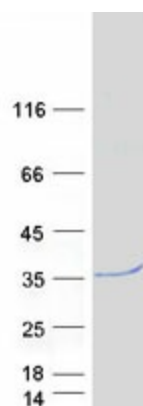
Product images:



Circular map for RC201667



Western blot validation of overexpression lysate (Cat# [LY412617]) using anti-DDK antibody (Cat# [TA50011-100]). Left: Cell lysates from untransfected HEK293T cells; Right: Cell lysates from HEK293T cells transfected with RC201667 using transfection reagent MegaTran 2.0 (Cat# [TT210002]).



Coomassie blue staining of purified SDR39U1 protein (Cat# [TP301667]). The protein was produced from HEK293T cells transfected with SDR39U1 cDNA clone (Cat# RC201667) using MegaTran 2.0 (Cat# [TT210002]).