

Product datasheet for **RC201665**

MED10 (NM_032286) Human Tagged ORF Clone

Product data:

Product Type: Expression Plasmids
Product Name: MED10 (NM_032286) Human Tagged ORF Clone
Tag: Myc-DDK
Symbol: MED10
Synonyms: L6; NUT2; TRG20
Mammalian Cell Selection: Neomycin
Vector: pCMV6-Entry (PS100001)
E. coli Selection: Kanamycin (25 ug/mL)
ORF Nucleotide Sequence: >RC201665 ORF sequence
Red=Cloning site Blue=ORF Green=Tags(s)

TTTTGTAATACGACTCACTATAGGGCGCCGGGAATTCGTCGACTGGATCCGGTACCGAGGAGATCTGCC
GCC**CGATCGCC**

ATGGCGGAGAAGTTTGACCACCTAGAGGAGCACCTGGAGAAGTTCGTGGAGAACATTCGGCAGCTCGGCA
TCATCGTCAGTGACTTCCAGCCCAGCAGCCAGGCCGGGCTCAACCAAAGCTGAATTTTATTGTTACTGG
CTTACAGGATATTGACAAGTGCAGACAGCAGCTTCATGATATTACTGTACCGTTAGAAGTTTTGAATAT
ATAGATCAAGGTCGAAATCCCCAGCTCTACACCAAAGAGTGCCTGGAGAGGGCTCTAGCTAAAAATGAGC
AAGTTAAAGGCAAGATCGACACCATGAAGAAATTTAAAAGCCTGTTGATTCAAGAAGCTTTCTAAAGTATT
TCCGGAAGACATGGCTAAGTATCGAAGCATCCGGGGGAGGATCACCCGCCTTCT

ACGCGTACGCGGCCGCTCGAGCAGAACTCATCTCAGAAGAGGATCTGGCAGCAAATGATATCCTGGATT
ACAAGGATGACGACGATAAGGTTTAA

Protein Sequence: >RC201665 protein sequence
Red=Cloning site Green=Tags(s)
MAEKFDHLEEHLEKFFVENIRQLGIIVSDFQSSQAGLNQKLNFIIVTGLQIDKCRQQLHDITVPLEVFEY
IDQGRNPQLYTKECLERALAKNEQVKGKIDTMKFKSLLIQELSKVPEDMAKYRSIRGEDHPPS

TRTRPLEQKLISEEDLAANDILDYKDDDDKV

Chromatograms: https://cdn.origene.com/chromatograms/mk6299_e08.zip

Restriction Sites: SgfI-MluI



[View online »](#)

Cloning Scheme:


ACCN: NM_032286

ORF Size: 405 bp

OTI Disclaimer: The molecular sequence of this clone aligns with the gene accession number as a point of reference only. However, individual transcript sequences of the same gene can differ through naturally occurring variations (e.g. polymorphisms), each with its own valid existence. This clone is substantially in agreement with the reference, but a complete review of all prevailing variants is recommended prior to use. [More info](#)

OTI Annotation: This clone was engineered to express the complete ORF with an expression tag. Expression varies depending on the nature of the gene.

Components: The ORF clone is ion-exchange column purified and shipped in a 2D barcoded Matrix tube containing 10ug of transfection-ready, dried plasmid DNA (reconstitute with 100 ul of water).

- Reconstitution Method:**
1. Centrifuge at 5,000xg for 5min.
 2. Carefully open the tube and add 100ul of sterile water to dissolve the DNA.
 3. Close the tube and incubate for 10 minutes at room temperature.
 4. Briefly vortex the tube and then do a quick spin (less than 5000xg) to concentrate the liquid at the bottom.
 5. Store the suspended plasmid at -20°C. The DNA is stable for at least one year from date of shipping when stored at -20°C.

Note: Plasmids are not sterile. For experiments where strict sterility is required, filtration with 0.22um filter is required.

RefSeq: [NM_032286.3](#)

RefSeq Size: 1059 bp

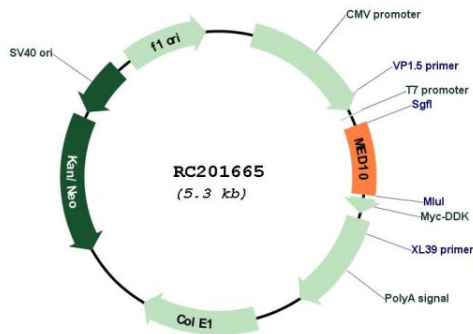
RefSeq ORF: 408 bp

Locus ID: 84246
 UniProt ID: [Q9BTT4](#)
 Cytogenetics: 5p15.31

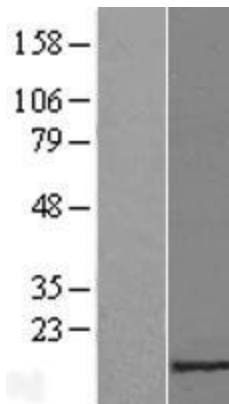
MW: 15.7 kDa

Gene Summary: MED10 is a component of the Mediator complex, which is a coactivator for DNA-binding factors that activate transcription via RNA polymerase II (Sato et al., 2003 [PubMed 12584197]).[supplied by OMIM, Oct 2008]

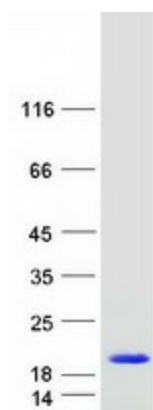
Product images:



Circular map for RC201665



Western blot validation of overexpression lysate (Cat# [LY410229]) using anti-DDK antibody (Cat# [TA50011-100]). Left: Cell lysates from untransfected HEK293T cells; Right: Cell lysates from HEK293T cells transfected with RC201665 using transfection reagent MegaTran 2.0 (Cat# [TT210002]).



Coomassie blue staining of purified MED10 protein (Cat# [TP301665]). The protein was produced from HEK293T cells transfected with MED10 cDNA clone (Cat# RC201665) using MegaTran 2.0 (Cat# [TT210002]).