

Product datasheet for **RC201663**

CEP72 (NM_018140) Human Tagged ORF Clone

Product data:

Product Type:	Expression Plasmids
Product Name:	CEP72 (NM_018140) Human Tagged ORF Clone
Tag:	Myc-DDK
Symbol:	CEP72
Vector:	pCMV6-Entry (PS100001)
E. coli Selection:	Kanamycin (25 ug/mL)
Cell Selection:	Neomycin



[View online »](#)

ORF Nucleotide
Sequence:

>RC201663 ORF sequence
Red=Cloning site Blue=ORF Green=Tags(s)

TTTTGTAATACGACTCACTATAGGGCGGCCGGGAATTCGTCGACTGGATCCGGTACCGAGGAGATCTGCC
GCC**CGGATCGCC**

ATGGCGCGGGCTGGCCCTCGGCTGGTGTGCTGAGCGAGGAGCGGTTTCGGGCGAAGAGCGGCTTAGGGCCTC
ACCGCGACTGGCTGAGCTTCAGTCATTGTCTATTCTGGAACTTACCAAGAGAAGATCACCCACCTGGG
ACATTCTCTGATGAGTTAACAGGTCTGAAATCTTTGGATCTCTCGCGCAACTCCTTGTTAGTCTGGAG
GGCATTACGTACCTGACTGCATTGGAGAGTCTCAATCTCTACTACAACCTGCATCTCTCGTTGGCAGAAG
TGTTTCGGCTCCACGCCCTAACCGAGCTCGTGGATGTGGACTTCCGGCTGAACCCCGTGGTGAAGGTTGA
GCCTGACTACCGCCTTTTGTGTGCACCTGCTCCCAAGCTCCAGCAGCTGGACGATCGCCCCGTGAGA
GCAAGCGAGCGGAAGGCTTCCCGACTGCATTTGCATCAGAGGACTCACTCGACTCCAAAGAGAGCGTCC
CAGCTTCTTTGAAAGAGGGCAGACCACACCACCCAGAGCAAGTGCACCGAGGCCTTGGCAAGCAGAG
CCTGGTCAATGGATGCGGATGACGAGGCAGTCTGAACCTCATTGCAGAGTGCAGTGGGACTCGGCAGG
CCTCCCGGGAGCACGAGCTTCCAGCCAGAAAGGGGCTGAGGCCGACTCTCGTGGTTCCCAAGAATCCAGAC
ATCTGTTGAGCCCGCAGTTGGTACAGTACCAGTGTGGGGACTCTGGGAAGCAGGGCCGTGAGACGAGGAG
GAGCAGCTGCAGAGGGTGTCTGTGGAGAAGATGCCTTGGAGCCAGCTCTGTGGAGAGCTTCCGCCACTG
TACGGAGCGGAGCCAGAGGCCTCCCGTGCACCCAGGCCACACACGTACTTACCCACACCCAGACTCCA
TGGATACCGAGGACTCGGCCTCTTCTCAGAAGTTGGATTTGTGAGGAAATGGTGCCTGGTCCCCTGCC
AGCCCCGGAAAGTGCAGGAAGCGAAGAATGCCTGTTGGAAGATTCCAGACGTTTTCCGACCAGGAGGGT
TTGGGCTGCCCGGAGAGAACTCATGGGTCCTCCGTGCCAAGGAGAGCCTGAGCAGACAGGACAGCTCAG
AAAGCAGGAACGGGAGGACCTTGTCTCAGCCTGAGGCCCTCGGAGACTGAGGAGCAGAGGCTCGGGGTGT
GACCGACACCAGAGAGCCGTCTCCCGGGTCACTCGGCTCTACCCGGGAAGAAGACGGCCCTGCAGGCG
GCGCTCTGGAGACGCTCTTGGACCTGGTGGACAGGAGCTGGGGCGGCTGCAGGTCCTGCACAGCAACG
AGGCATTCCTTGCTCAGGCAAGACACATCTTGTCTGTTGAAGAATTCACAGCAGCTCAGGACAGCTC
TGCGATGGTGGTGAAGATGTCGGCTCCCTGGCTCTGGAGAGTAAGTCCCTGCAAAGCCGCTTGTGAG
CAGCAGCAGCAGCAGCCCGGAGATGAGCGAGGTGACGGCGGAGCTGCACCACACACAAGGAGCTGG
ATGATTTGAGACAACATTTAGATAAATCTTTGGAAGAGAACAGTAGGTTAAAATCGCTTTTGTGAGTAT
GAAAAAGGAAGTGAAGAGTGCAGACTGCAGCCAGTAAATTTGCAGATCGCTGGACTTCAAACAAGT
GTGAAGAGGCTGTGTGGCGAGATTGTGGAAGTGAAGCAGCACCTGGAGCACTACGACAAGATCCAGGAGC
TCACGCAGATGCTGCAGGAGAGCCACAGCTCCCTGGTCAACCAATGAACACCTGCTGCAGGAGCTGAG
CCAGGTGCGGGCGCAGCAGAGCCGAGGTGGAGCAGATGCACTGGAGCTACCAGGAGCTCAAGAAGACC
ATGGCCCTGTTTCCACACAGCAGCGCCAGCCATGGAGGCTGCCAGGCCTGC

ACGCGTACGCGGCCGCTCGAGCAGAACTCATCTCAGAAGAGGATCTGGCAGCAAATGATATCCTGGATT
ACAAGGATGACGACGATAAGGTTTAA

Protein Sequence: >RC201663 protein sequence
Red=Cloning site Green=Tags(s)

MARAGPRLVLSEEAVRAKSGLGPHRDLAELQSLIPGTYQEKITHLGHLSMLTGLKSLDLSRNSLVSLE
 GIQYLTALESNLNLYNCISSLAEVFRLHALTELVDVDFRLNPVVKVEPDYRLFVVHLLPKLQQLDDRPVR
 ASERKASRLHFASEDSLDSKESVPASLKEGRPHHPRAKCTEALAKQSLVMDADDEAVLNLIAECEWDLGR
 PPGSTSFQKGREADSRGSQESRHLLSPQLVQYQCGDSGKQGRETRRSSCRGCCLEKMPWSQLCGELPPL
 YGAEPEASRAPRPHTYFTHPDSMDTEDSASSQKLDLSGEMVPGPLPAPGKCRKRRMPVGRFQTFSDQEG
 LGCPERTHGSSVPKESLSRQDSSESRNGRTLSPQEAASETEEQRSRGVTDTREPSPGSHSALPGKKTALQA
 ALLETLDDLVDRSWGGCRSLHSNEAFLAQRHILSSVEEFTAAQDSSAMVGEDVGSALAESKSLQSR LAE
 QQQQHAREMSEVTAELHHTHKELDDLRLHDKSLEENSRLKSLLSMKKEVKSADTAATLNLQIAGLQTS
 VKRLCGEIVELKQHLEHYDKIQELTQMLQESHSSLVSTNEHLLQELSQVRAQHRAEVEQMHWYSYQELKKT
 MALFPHSSASHGGCQAC

TRTRPLEQKLISEEDLAANDILDYKDDDDKV

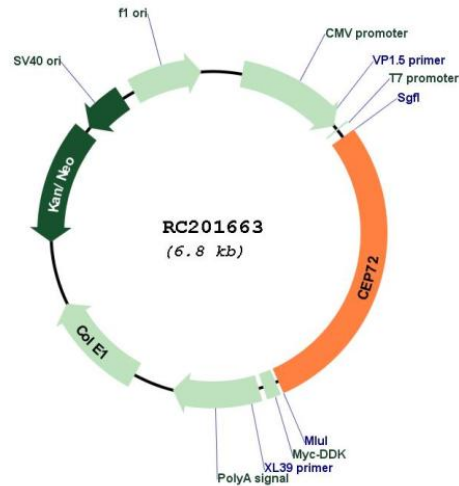
Chromatograms: https://cdn.origene.com/chromatograms/mk6541_c07.zip

Restriction Sites: SgfI-MluI

Cloning Scheme:



Plasmid Map:



ACCN: NM_018140

ORF Size: 1941 bp

OTI Disclaimer: The molecular sequence of this clone aligns with the gene accession number as a point of reference only. However, individual transcript sequences of the same gene can differ through naturally occurring variations (e.g. polymorphisms), each with its own valid existence. This clone is substantially in agreement with the reference, but a complete review of all prevailing variants is recommended prior to use. [More info](#)

OTI Annotation: This clone was engineered to express the complete ORF with an expression tag. Expression varies depending on the nature of the gene.

Components: The ORF clone is ion-exchange column purified and shipped in a 2D barcoded Matrix tube containing 10ug of transfection-ready, dried plasmid DNA (reconstitute with 100 ul of water).

Reconstitution Method:

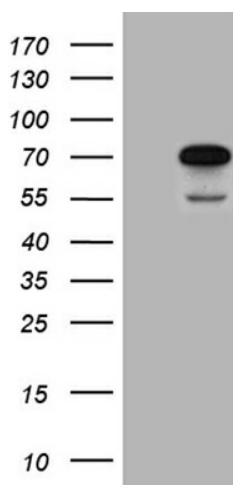
1. Centrifuge at 5,000xg for 5min.
2. Carefully open the tube and add 100ul of sterile water to dissolve the DNA.
3. Close the tube and incubate for 10 minutes at room temperature.
4. Briefly vortex the tube and then do a quick spin (less than 5000xg) to concentrate the liquid at the bottom.
5. Store the suspended plasmid at -20°C. The DNA is stable for at least one year from date of shipping when stored at -20°C.

RefSeq: [NM_018140.4](#)

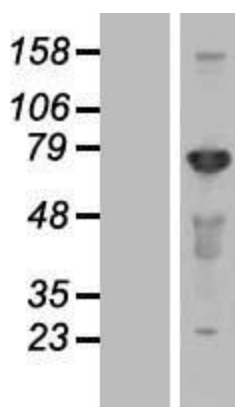
RefSeq Size: 2427 bp
 RefSeq ORF: 1944 bp
 Locus ID: 55722
 UniProt ID: [Q9P209](#)
 Cytogenetics: 5p15.33
 MW: 71.7 kDa

Gene Summary: The product of this gene is a member of the leucine-rich-repeat (LRR) superfamily of proteins. The protein is localized to the centrosome, a non-membraneous organelle that functions as the major microtubule-organizing center in animal cells. [provided by RefSeq, Jul 2008]

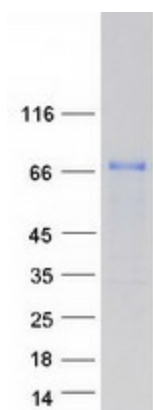
Product images:



HEK293T cells were transfected with the pCMV6-ENTRY control (Cat# [PS100001], Left lane) or pCMV6-ENTRY CEP72 (Cat# RC201663, Right lane) cDNA for 48 hrs and lysed. Equivalent amounts of cell lysates (5 ug per lane) were separated by SDS-PAGE and immunoblotted with anti-CEP72 (Cat# [TA811145])(1:2000). Positive lysates [LY413293] (100ug) and [LC413293] (20ug) can be purchased separately from OriGene.



Western blot validation of overexpression lysate (Cat# [LY413293]) using anti-DDK antibody (Cat# [TA50011-100]). Left: Cell lysates from untransfected HEK293T cells; Right: Cell lysates from HEK293T cells transfected with RC201663 using transfection reagent MegaTran 2.0 (Cat# [TT210002]).



Coomassie blue staining of purified CEP72 protein (Cat# [TP301663]). The protein was produced from HEK293T cells transfected with CEP72 cDNA clone (Cat# RC201663) using MegaTran 2.0 (Cat# [TT210002]).