

## Product datasheet for RC201662

### TAF1D (NM\_024116) Human Tagged ORF Clone

#### Product data:

Product Type:	Expression Plasmids
Product Name:	TAF1D (NM_024116) Human Tagged ORF Clone
Tag:	Myc-DDK
Symbol:	TAF1D
Synonyms:	JOSD3; RAFI41; TAF(I)41; TAFI41
Mammalian Cell Selection:	Neomycin
Vector:	pCMV6-Entry (PS100001)
E. coli Selection:	Kanamycin (25 ug/mL)
ORF Nucleotide Sequence:	>RC201662 ORF sequence Red=Cloning site Blue=ORF Green=Tags(s)

TTTTGTAATACGACTCACTATAGGGCGGCCGGAATTCGTCGACTGGATCCGGTACCGAGGAGATCTGCC  
GCC**CGATCGCC**

ATGGATAATCAGGAATAGATTCTTTGACCATGTGACATCTGATGCTGTGGAACCTGCAAATCGAAGTG  
ATAACTCTTCTGATAGCAGCTTATTTAAACTCAGTGTATCCCTTACTCACCTAAAGGGGAGAAAAGAAA  
CCCCATTCGAAAATTTGTTTCGTACACCTGAAAGTGTTCACGCAAGTGATTCATCAAGTGACTCATCTTTT  
GAACCAATACCATTGACTATAAAAGCTATTTTGAAGATTCAAGAACAGGAAAAAGAGATATAAAAAAA  
AGAAAAAGAGGAGGTACCAGCCAACAGGAAGACCACGGGAAGACCAGAAGGAAGGAGAAATCCTATATA  
CTACTAATAGATAAGAAGAAACAATTTAGAAGCAGAGGATCTGGCTTCCATTTTTAGAATCAGAGAAT  
GAAAAAACGCACCTTGAGAAAAATTTAACGTTTGAGCAAGCTGTTGCAAGAGGATTTTTAACTATA  
TTGAAAACTGAAGTATGAACACCACCTGAAAGAATCATTGAAGCAAATGAATGTTGGTGAAGATTTAGA  
AAATGAAGATTTTACAGTCGTAGATACAAATTTTGGATGATGATGGATCCATTTCTCCTATTGAGGAG  
TCAACAGCAGAGGATGAGGATGCAACACATCTGAAGATAACGAATGTGATATCAAATGGCAGGGGATA  
GTTTCATAGTAAGTTCTGAATTCCTGTAAGACTGAGTGTATACTTAGAAGAAGAGGATATTACTGAAGA  
AGCTGCTTTGTCTAAAAAGAGAGCTACAAAAGCCAAAAACTGGACAGAGAGGCTGAAATG

**ACGCGT**ACGCGGCCGCTCGAGCAGAAACTCATCTCAGAAGAGGATCTGGCAGCAAATGATATCCTGGATT  
ACAAGGATGACGACGATAAGGTTTAA



**Protein Sequence:** >RC201662 protein sequence  
 Red=Cloning site Green=Tags(s)

```
MDKSGIDSLDHVTSDAVELANRSDNSSDSSLFKTQCIPYSPKGEKRNPIRKFVRTPEVHASDSSSDSSF
EPIPLTIKAIIFERFKNRKKRYKKKKRRYQPTGRPRGRPEGRNPYSLIDKKQFRSRGSGFPFLESEN
EKNAPWRKILTFEQAVARGFFNYIEKLYEHLKESLQMNVEDLENEFDSSRRYKFLDDGSIPIEE
STAEDEDATHLEDNECDIKLAGDSFIVSSEFPVRLSVYLEEEDIETEEAALSKKRATKAKNTGQRGLKM
```

TRTRPLEQKLISEEDLAANDILDYKDDDDKV

**Chromatograms:** [https://cdn.origene.com/chromatograms/mk6541\\_b11.zip](https://cdn.origene.com/chromatograms/mk6541_b11.zip)

**Restriction Sites:** SgfI-MluI

**Cloning Scheme:**

Cloning sites used for ORF Shuttling:



\* The last codon before the Stop codon of the ORF

**ACCN:** NM\_024116

**ORF Size:** 834 bp

**OTI Disclaimer:** The molecular sequence of this clone aligns with the gene accession number as a point of reference only. However, individual transcript sequences of the same gene can differ through naturally occurring variations (e.g. polymorphisms), each with its own valid existence. This clone is substantially in agreement with the reference, but a complete review of all prevailing variants is recommended prior to use. [More info](#)

**OTI Annotation:** This clone was engineered to express the complete ORF with an expression tag. Expression varies depending on the nature of the gene.

**Components:** The ORF clone is ion-exchange column purified and shipped in a 2D barcoded Matrix tube containing 10ug of transfection-ready, dried plasmid DNA (reconstitute with 100 ul of water).

**Reconstitution Method:**

1. Centrifuge at 5,000xg for 5min.
2. Carefully open the tube and add 100ul of sterile water to dissolve the DNA.
3. Close the tube and incubate for 10 minutes at room temperature.
4. Briefly vortex the tube and then do a quick spin (less than 5000xg) to concentrate the liquid at the bottom.
5. Store the suspended plasmid at -20°C. The DNA is stable for at least one year from date of shipping when stored at -20°C.

**Note:** Plasmids are not sterile. For experiments where strict sterility is required, filtration with 0.22um filter is required.

**RefSeq:** [NM\\_024116.4](#)

**RefSeq Size:** 1323 bp

**RefSeq ORF:** 837 bp

**Locus ID:** 79101

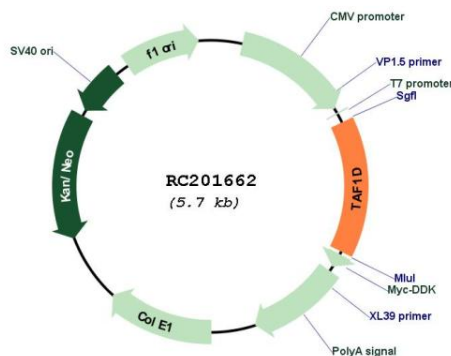
**UniProt ID:** [Q9H5J8](#)

**Cytogenetics:** 11q21

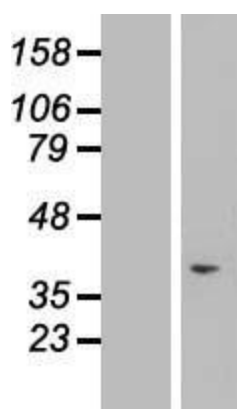
**MW:** 32.1 kDa

**Gene Summary:** TAF1D is a member of the SL1 complex, which includes TBP (MIM 600075) and TAF1A (MIM 604903), TAF1B (MIM 604904), and TAF1C (MIM 604905), and plays a role in RNA polymerase I transcription (Wang et al., 2004 [PubMed 15520167]; Gorski et al., 2007 [PubMed 17318177]). [supplied by OMIM, Jun 2009]

### Product images:



Circular map for RC201662



Western blot validation of overexpression lysate (Cat# [LY411349]) using anti-DDK antibody (Cat# [TA50011-100]). Left: Cell lysates from untransfected HEK293T cells; Right: Cell lysates from HEK293T cells transfected with RC201662 using transfection reagent MegaTran 2.0 (Cat# [TT210002]).