

Product datasheet for **RC201657**

CDT1 (NM_030928) Human Tagged ORF Clone

Product data:

Product Type:	Expression Plasmids
Product Name:	CDT1 (NM_030928) Human Tagged ORF Clone
Tag:	Myc-DDK
Symbol:	CDT1
Synonyms:	DUP; RIS2
Mammalian Cell Selection:	Neomycin
Vector:	pCMV6-Entry (PS100001)
E. coli Selection:	Kanamycin (25 ug/mL)



[View online »](#)

ORF Nucleotide Sequence:

>RC201657 representing NM_030928
 Red=Cloning site Blue=ORF Green=Tags(s)

TTTTGTAATACGACTCACTATAGGGCGGCCGGAATTCGTCGACTGGATCCGGTACCGAGGAGATCTGCC
 GCC**CGCATCGCC**

ATGGAGCAGCGCCGCGTACCGACTTCTTCGCGCGCCCGCCCGGGCCCCCGCATCGCGCCGCCA
 AGCTGGCCTGCCGCACCCAGCCCGCCAGGCCCGCACTCCGCGCCCGGCTCCGCTACCACTGGCAG
 CCGCAAGCGCGCCCGCCCGCCCGCCCGGACGCGCAGGCCAGGCCACCGGCCCGCAGGAGACTG
 CGGCTGTGCGTGGACGAGGTTTCCAGCCCACTACCCCGAGGCCCGACATCCAGCCTGCCCTTCTC
 CGGGCCAGAAGATAAAGAAATCCACCCCGCAGCAGGTACCGGCCACCTGACATCCGCGCAGGACCA
 GGACACCATCTCTGAGCTTGCCTGCAACGGGCCGGGAGTGGGGCAAGAGTCCGGGCGCTG
 AAGGCCAGTCCCAGGATGCTGGGGAGTCTGCACCCAGAGGCCGAGGGCCGCCCTGAGGAGCCATGTG
 GCGAGAAGGCCCGCCCTACCAGCGTTCATGCCCTGGCCAGCCCGGCTGCCGGACTCGTGTCTGCC
 CTACAAGTACCAGGTGCTGGCGGAGATGTTCCGCAGCATGGACACCATCGTGGGCATGCTCCACAACCGC
 TCCGAGACGCCACCTTTGCCAAGGTCCAGCGGGCGTCCAGGACATGATGCGTAGGCGTTTTGAGGAGC
 GCAATGTTGGCCAGATCAAACCGTGTACCCGGCCTCCTACCGCTTCCGCCAGGAGCGCAGTGTCCCCAC
 CTTCAAGGATGGCACCAGGAGGTACAGTTACCAGCTCACCATCGAGCCACTGCTGGAGCAGGAGGCTGAC
 GGAGCAGCCCCCAGCTCACGGCCTCGCGCCTCCTGCAGCGACGGCAGATCTTACGCCAGAAGCTGGTGG
 AGCACGTCAAGGAGCACCACAAGGCCTTCTGGCCTCCTGAGCCCCGCCATGGTGGTCCCGGAGGACCA
 GCTGACCCGCTGGCACCAGCGCTTCAACGTGGATGAAGTACCCGACATCGAGCCGGCCGCGCTGCCCCAG
 CCACCCGCCACGGAGAAGCTCACCACTGCTCAGGAGGTGCTGGCCGGGCCCGCAACCTGATTTACCCCA
 GGATGGAGAAGGCCTTGAGTCAATTGGCCCTGCCTCTGCTGCGCCAGCAGCCCGGGTCTCCAGGCC
 AGCACTGCCGGCTACCCACAGCCACCCCGCCTGCAGCCTCTCCAGTGTCTGAAGGGGGTGTCCCCAG
 GATCTGCTGGAGCGGATCCGAGCCAAGGAGGCACAGAAGCAGCTGGCACAGATGACGCGGTGCCCGGAGC
 AGGAGCAGCGGCTGCAGCGCTTAGAACGGCTGCCTGAGCTGGCCCGCTGCTGCGGAGCGTCTTTGTGTC
 CGAACGCAAGCCTGCGCTCAGCATGGAGGTGGCCTGTGCCAGGATGGTGGGCAGCTGTTGTACTATCATG
 AGCCCTGGGAAATGGAGAAGCACCTGCTGCTCCTCTCCGAGCTGCTGCCGGACTGGCTCAGCCTCCACC
 GCATCCGCACCGACACCTACGTCAAGCTGGACAAGGCCGCGGACCTCGCCACATCACTGCACGCTGGC
 CCACCAGACAGTGTGAGGAGGGGCTG

ACGCGTACGCGGCCGCTCGAGCAGAAACTCATCTCAGAAGAGGATCTGGCAGCAAATGATATCCTGGATT
 ACAAGGATGACGACGATAAGGTTTAA

Protein Sequence:

>RC201657 representing NM_030928
 Red=Cloning site Green=Tags(s)

MEQRRVTDFFARRRPGPPRIAPPKLACRTPSPARPALRAPASATSGSRKRARPPAAPGRDQARPPARRRL
 RLSVDEVSSPSTPEAPDIPACPSPGQKIKKSTPAAGQPPHLTSAQDQDTISELASCLRARELGARVRAL
 KASAQDAGESCTPEAEGRPEEPCGEKAPAYQRFHALAQPLPGLVLPYKYQVLAEMFRSMDTIVGMLHNR
 SETPTFAKVQRGVQDMMRRRFEERNVQIKTVYPASYRFRQERSVPTFKDGTTRSDYQLTIEPLLEQEAD
 GAAPQLTASRLLQRRQIFSQKLVEHVKEHHKAFSLASLSPAMVVPEDQLTRWHPRFNVEVPDIEPAALPQ
 PPATEKLTAAQEVLARARNLISPRMEKALSQLALRSAAPSSPGSPRALPATPPATPPAASPSALKGVSSQ
 DLLERIRAKEAQKLAQMTRCPEQEQLRQLERLPELARVLRVSVSERKPALSMEVACARMVGSCTIM
 SPGEMEKHLLLLSELLPDWLSLHRIRTDYVVKLDKAADLAHITARLAHQTRAEGL

TRTRPLEQKLISEEDLAANDILDYKDDDDKV

Chromatograms:

https://cdn.origene.com/chromatograms/mg2446_a12.zip

Restriction Sites:

Sgfl-Mlul

Cloning Scheme:


ACCN: NM_030928

ORF Size: 1638 bp

OTI Disclaimer: The molecular sequence of this clone aligns with the gene accession number as a point of reference only. However, individual transcript sequences of the same gene can differ through naturally occurring variations (e.g. polymorphisms), each with its own valid existence. This clone is substantially in agreement with the reference, but a complete review of all prevailing variants is recommended prior to use. [More info](#)

OTI Annotation: This clone was engineered to express the complete ORF with an expression tag. Expression varies depending on the nature of the gene.

Components: The ORF clone is ion-exchange column purified and shipped in a 2D barcoded Matrix tube containing 10ug of transfection-ready, dried plasmid DNA (reconstitute with 100 ul of water).

- Reconstitution Method:**
1. Centrifuge at 5,000xg for 5min.
 2. Carefully open the tube and add 100ul of sterile water to dissolve the DNA.
 3. Close the tube and incubate for 10 minutes at room temperature.
 4. Briefly vortex the tube and then do a quick spin (less than 5000xg) to concentrate the liquid at the bottom.
 5. Store the suspended plasmid at -20°C. The DNA is stable for at least one year from date of shipping when stored at -20°C.

Note: Plasmids are not sterile. For experiments where strict sterility is required, filtration with 0.22um filter is required.

RefSeq: [NM_030928.4](#)

RefSeq Size: 2742 bp

RefSeq ORF: 1641 bp

Locus ID: 81620

UniProt ID: [Q9H211](#)

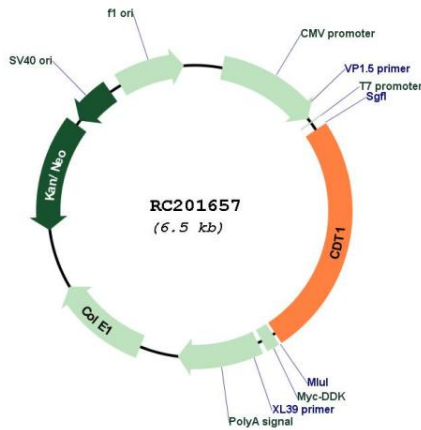
Cytogenetics: 16q24.3

Protein Families: Stem cell - Pluripotency

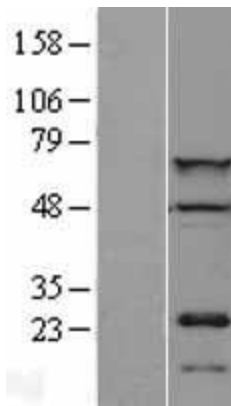
MW: 60.2 kDa

Gene Summary: The protein encoded by this gene is involved in the formation of the pre-replication complex that is necessary for DNA replication. The encoded protein can bind geminin, which prevents replication and may function to prevent this protein from initiating replication at inappropriate origins. Phosphorylation of this protein by cyclin A-dependent kinases results in degradation of the protein. [provided by RefSeq, Mar 2011]

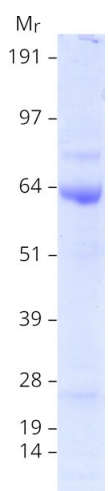
Product images:



Circular map for RC201657



Western blot validation of overexpression lysate (Cat# [LY403098]) using anti-DDK antibody (Cat# [TA50011-100]). Left: Cell lysates from untransfected HEK293T cells; Right: Cell lysates from HEK293T cells transfected with RC201657 using transfection reagent MegaTran 2.0 (Cat# [TT210002]).



Coomassie blue staining of purified CDT1 protein (Cat# [TP301657]). The protein was produced from HEK293T cells transfected with CDT1 cDNA clone (Cat# RC201657) using MegaTran 2.0 (Cat# [TT210002]).