

## Product datasheet for **RC201652L3V**

### RTFDC1 (RTF2) (NM\_016407) Human Tagged ORF Clone Lentiviral Particle

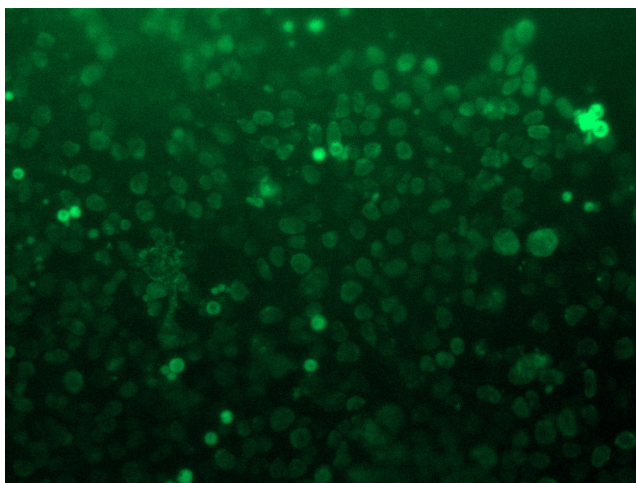
#### Product data:

Product Type:	Lentiviral Particles
Product Name:	RTFDC1 (RTF2) (NM_016407) Human Tagged ORF Clone Lentiviral Particle
Symbol:	RTF2
Synonyms:	C20orf43; CDAO5; HSPC164; RTFDC1; SHUJUN-3
Mammalian Cell Selection:	Puromycin
Vector:	pLenti-C-Myc-DDK-P2A-Puro (PS100092)
Tag:	Myc-DDK
ACCN:	NM_016407
ORF Size:	918 bp
ORF Nucleotide Sequence:	The ORF insert of this clone is exactly the same as(RC201652).
OTI Disclaimer:	The molecular sequence of this clone aligns with the gene accession number as a point of reference only. However, individual transcript sequences of the same gene can differ through naturally occurring variations (e.g. polymorphisms), each with its own valid existence. This clone is substantially in agreement with the reference, but a complete review of all prevailing variants is recommended prior to use. <a href="#">More info</a>
OTI Annotation:	This clone was engineered to express the complete ORF with an expression tag. Expression varies depending on the nature of the gene.
RefSeq:	<a href="#">NM_016407.1</a>
RefSeq Size:	1672 bp
RefSeq ORF:	921 bp
Locus ID:	51507
UniProt ID:	<a href="#">Q9BY42</a>
Cytogenetics:	20q13.31
Domains:	DUF602
MW:	33.9 kDa


[View online »](#)

**Gene Summary:**

Replication termination factor which is a component of the elongating replisome (Probable). Required for ATR pathway signaling upon DNA damage and has a positive activity during DNA replication. Might function to facilitate fork pausing at replication fork barriers like the rDNA. May be globally required to stimulate ATR signaling after the fork stalls or encounters a lesion (Probable). Interacts with nascent DNA (PubMed:29290612).[UniProtKB/Swiss-Prot Function]

**Product images:**


[RC201652L3] was used to prepare Lentiviral particles using [TR30037] packaging kit. HEK293T cells were transduced with RC201652L3V particle to overexpress human RTF2-Myc-DDK fusion protein.