

Product datasheet for RC201651

G protein beta 4 (GNB4) (NM_021629) Human Tagged ORF Clone

Product data:

Product Type:	Expression Plasmids
Product Name:	G protein beta 4 (GNB4) (NM_021629) Human Tagged ORF Clone
Tag:	Myc-DDK
Symbol:	G protein beta 4
Synonyms:	CMTD1F
Mammalian Cell Selection:	Neomycin
Vector:	pCMV6-Entry (PS100001)
E. coli Selection:	Kanamycin (25 ug/mL)
ORF Nucleotide Sequence:	>RC201651 ORF sequence Red=Cloning site Blue=ORF Green=Tags(s)

TTTTGTAATACGACTCACTATAGGGCGGCCGGAATTCGTCGACTGGATCCGGTACCGAGGAGATCTGCC
GCC**CGATCGCC**

ATGAGCGAACTGGAACAGTTGAGGCAAGAAGCAGAACAACGCGGAATCAGATTCAGGATGCTCGGAAAG
CATGTAATGATGCAACGCTTGTTGAGTACATCAAATATGGACTCCGTGGGTGGAATACAAATGCGAAC
AAGACGTACACTGAGGGCCACCTAGCTAAAATCTATGCTATGCATTGGGGATACGATTCAGGCTGCTA
GTCAGTGCTTCTCAAGATGGAAAATTAATTATTTGGGATAGCTATACAACAAATAAGATGCATGCTATTC
CTTTGAGGTCCTCTGGGTGATGACCTGTGCTTATGCTCCCTCTGGTAATTATGTTGCCTGTGGAGGCTT
GGACAACATCTGCTCTATATAACTTAAAGACCAGAGAGGAAATGTGAGAGTAAGCCGAGAGTTGCCA
GGTCACACAGGGTACTTGTCTGCTGCTGTTTTTTAGATGACAGCCAAATTTGTTACAAGTTCAGGAGATA
CAACTTGTGCTTTATGGGACATCGAAACTGCCAGCAGACCACCACATTCAGTGGGCATTCTGGAGATGT
GATGAGTCTTTCTTTGAGTCCTGACATGAGGACTTTTGTCTGGTGCTTGTGATGCCTCTTCCAAATTA
TGGGATATTCGAGATGGAATGTGTAGACAGTCTTTCACGGGACATGTCTCAGATATCAATGCTGTGAGTT
TTTTCCAAATGGATATGCCTTCGCCACTGGCTCTGATGATGCCACTTCCCGGCTCTTTGACCTTCGTGC
AGATCAAGAGTTATTATTGATTCTCATGACAATATCATCTGTGAATCACTTCTGTAGCCTTCTCAAAA
AGTGGCGTCTCTTGTGGCTGGTTACGATGACTTTAATTGTAATGTATGGGACACGCTAAAAGGAGATC
GTGCAGGTGTCCTTGTGGTCATGACAACCGTGTGAGCTGCTTAGGTGTAAGTATGATGGCATGGCTGT
GGCAACAGGCTCTTGGGACAGTTTTCTTAGAATCTGGAAT

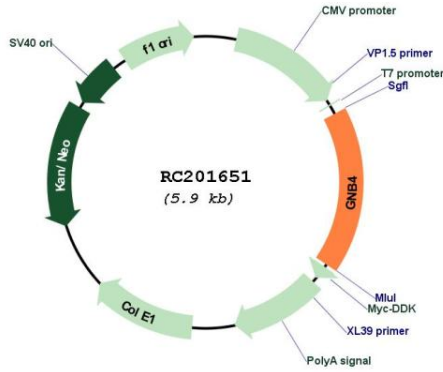
ACGCGTACGCGGCCGCTCGAGCAGAAACTCATCTCAGAAGAGGATCTGGCAGCAAATGATATCCTGGATT
ACAAGGATGACGACGATAAGGTTTAA



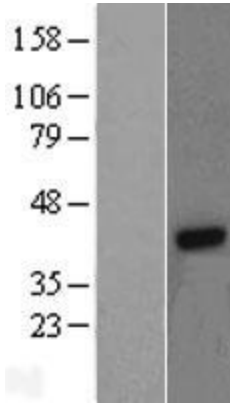
[View online »](#)

Reconstitution Method:	<ol style="list-style-type: none">1. Centrifuge at 5,000xg for 5min.2. Carefully open the tube and add 100ul of sterile water to dissolve the DNA.3. Close the tube and incubate for 10 minutes at room temperature.4. Briefly vortex the tube and then do a quick spin (less than 5000xg) to concentrate the liquid at the bottom.5. Store the suspended plasmid at -20°C. The DNA is stable for at least one year from date of shipping when stored at -20°C.
Note:	Plasmids are not sterile. For experiments where strict sterility is required, filtration with 0.22um filter is required.
RefSeq:	NM_021629.1
RefSeq Size:	6428 bp
RefSeq ORF:	1023 bp
Locus ID:	59345
UniProt ID:	Q9HAV0
Cytogenetics:	3q26.33
Domains:	WD40
Protein Families:	Druggable Genome
Protein Pathways:	Chemokine signaling pathway
MW:	37.6 kDa
Gene Summary:	Heterotrimeric guanine nucleotide-binding proteins (G proteins), which integrate signals between receptors and effector proteins, are composed of an alpha, a beta, and a gamma subunit. These subunits are encoded by families of related genes. This gene encodes a beta subunit. Beta subunits are important regulators of alpha subunits, as well as of certain signal transduction receptors and effectors. [provided by RefSeq, Jul 2008]

Product images:



Circular map for RC201651



Western blot validation of overexpression lysate (Cat# [LY411956]) using anti-DDK antibody (Cat# [TA50011-100]). Left: Cell lysates from untransfected HEK293T cells; Right: Cell lysates from HEK293T cells transfected with RC201651 using transfection reagent MegaTran 2.0 (Cat# [TT210002]).