

Product datasheet for RC201649

Homeo box C10 (HOXC10) (NM_017409) Human Tagged ORF Clone

Product data:

Product Type:	Expression Plasmids
Product Name:	Homeo box C10 (HOXC10) (NM_017409) Human Tagged ORF Clone
Tag:	Myc-DDK
Symbol:	Homeo box C10
Synonyms:	HOX3I
Mammalian Cell Selection:	Neomycin
Vector:	pCMV6-Entry (PS100001)
E. coli Selection:	Kanamycin (25 ug/mL)
ORF Nucleotide Sequence:	>RC201649 ORF sequence Red=Cloning site Blue=ORF Green=Tags(s)

TTTTGTAATACGACTCACTATAGGGCGCCGGGAATTCGTCGACTGGATCCGGTACCGAGGAGATCTGCC
GCC**CGATCGCC**

ATGACATGCCCTCGCAATGTAACCCGAACTCGTACGCGGAGCCCTTGGCTGCGCCCGCGGAGGAGAGC
GCTATAGCCGGAGCGCAGGCATGTATATGCAGTCTGGGAGTGACTTCAATTGCGGGGTGATGAGGGGCTG
CGGGCTCGCGCCCTCGCTCTCCAAGAGGGACGAGGGCAGCAGCCCGCCTCGCCCTCAACACCTATCCG
TCCTACCTCTCGCAGCTGGACTCCTGGGGCAGCCCAAAGCCGCCTATCGCCTGGAACAACCTGTTGGCA
GGCCGCTGTCCTCTGCTCCTACCCACCTAGTGTCAAGGAGGAGAATGTCTGCTGCATGTACAGCGCAGA
GAAGCGGGCGAAAAGTGGCCCGAGGCAGCTCTACTCCACCCCTTGC CGGAGTCTGCTTGGGGAG
CAGGAGGTACCCGTGCCAGCTACTACCGCGCCAGCCGAGCTACTCCGCGCTGGACAAGACGCCCACT
GTTCTGGGGCCAACGACTTCAAGCCCTTTCGAGCAGCGGGCCAGTCTCAACCCGCGCGCCGAACATCT
GGAATCGCCTCAGCTGGGGGGCAAAGTGAGTTTCCCTGAGACCCCAAGTCCGACAGCCAGACCCCAAGC
CCAATGAAATCAAGACGGAGCAGAGCCTGGCGGGCCCTAAAGGGAGCCCTCGGAGAGCGAAAAGGAGA
GGGCAAAGCTGCCGACTCCAGCCAGACACCTCGGATAACGAAGCGAAAAGAGGAGATAAAGGCAGAAAA
CACCACAGGAAATTGGCTGACAGCAAAGAGCGGAAGGAAGAAGAGGTGCCCTATACTAAACACCAGACG
CTGGAATTGGAGAAAGAATTTCTGTTCAATATGTATTTGACGCGAGAGCGCCCTGGAGATTAGCAAGA
CCATTAACCTTACAGACAGACAAGTCAAAATCTGGTTTCAAATCGCAGAATGAAACTCAAGAAAATGAA
CCGAGAGAATCGGATCCGGAACTGACCTCCAATTTTAATTTACC

ACGCGTACGCGGCCGCTCGAGCAGAAACTCATCTCAGAAGAGGATCTGGCAGCAAATGATATCCTGGATT
ACAAGGATGACGACGATAAGGTTTAA



[View online »](#)

Protein Sequence: >RC201649 protein sequence
Red=Cloning site Green=Tags(s)

MTCPRNVTPNSYAEPLAAPGGGERYSRSAGMYMQSGSDFNCGVMRGCLAPSLSKRDEGSSPSLALNTYP
 SYLSQLDSWGDPAAYRLEQPVGRPLSSCSYPSPVKEENVCCMYSAEKRAKSGPEAALYSHPLPESCLGE
 HEVVPVSYRASPYSYALDKTPHCSGANDFEAPFEQASLNPRAEHLESPQLGGKVSFPETPKSDSQTPS
 PNEIKTEQSLAGPKGSPSESEKERAKAADSSPDTSDNEAKEEIKAEENTGNWLTAKSGRKKRCPYTKHQ
 TLELEKEFLFNMYLTRERRLEISKITINLTDQRVKIWFQNRMRKMKMNRNRIRELTSNFNT

TRTRPLEQKLISEEDLAANDILDYKDDDDKV

Chromatograms: https://cdn.origene.com/chromatograms/mk6073_h01.zip

Restriction Sites: SgfI-MluI

Cloning Scheme:

Cloning sites used for ORF Shuttling:



* The last codon before the Stop codon of the ORF

ACCN: NM_017409

ORF Size: 1026 bp

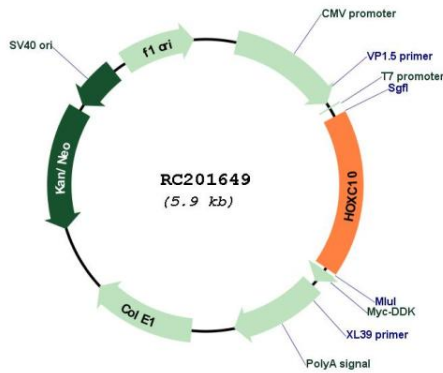
OTI Disclaimer: The molecular sequence of this clone aligns with the gene accession number as a point of reference only. However, individual transcript sequences of the same gene can differ through naturally occurring variations (e.g. polymorphisms), each with its own valid existence. This clone is substantially in agreement with the reference, but a complete review of all prevailing variants is recommended prior to use. [More info](#)

OTI Annotation: This clone was engineered to express the complete ORF with an expression tag. Expression varies depending on the nature of the gene.

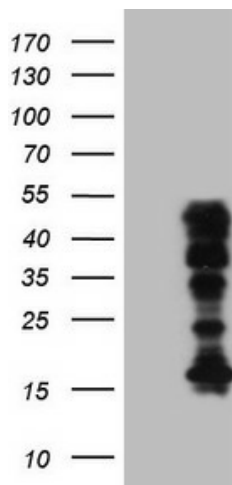
Components: The ORF clone is ion-exchange column purified and shipped in a 2D barcoded Matrix tube containing 10ug of transfection-ready, dried plasmid DNA (reconstitute with 100 ul of water).

Reconstitution Method:	<ol style="list-style-type: none">1. Centrifuge at 5,000xg for 5min.2. Carefully open the tube and add 100ul of sterile water to dissolve the DNA.3. Close the tube and incubate for 10 minutes at room temperature.4. Briefly vortex the tube and then do a quick spin (less than 5000xg) to concentrate the liquid at the bottom.5. Store the suspended plasmid at -20°C. The DNA is stable for at least one year from date of shipping when stored at -20°C.
Note:	Plasmids are not sterile. For experiments where strict sterility is required, filtration with 0.22um filter is required.
RefSeq:	NM_017409.4
RefSeq Size:	2017 bp
RefSeq ORF:	1029 bp
Locus ID:	3226
UniProt ID:	Q9NYD6
Cytogenetics:	12q13.13
Protein Families:	Transcription Factors
MW:	38.1 kDa
Gene Summary:	This gene belongs to the homeobox family of genes. The homeobox genes encode a highly conserved family of transcription factors that play an important role in morphogenesis in all multicellular organisms. Mammals possess four similar homeobox gene clusters, HOXA, HOXB, HOXC and HOXD, which are located on different chromosomes and consist of 9 to 11 genes arranged in tandem. This gene is one of several homeobox HOXC genes located in a cluster on chromosome 12. The protein level is controlled during cell differentiation and proliferation, which may indicate this protein has a role in origin activation. [provided by RefSeq, Jul 2008]

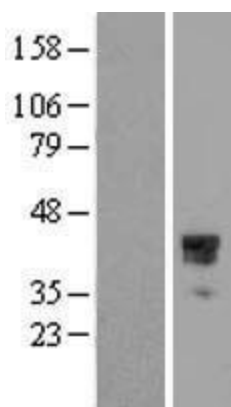
Product images:



Circular map for RC201649



HEK293T cells were transfected with the pCMV6-ENTRY control (Cat# [PS100001], Left lane) or pCMV6-ENTRY HOXC10 (Cat# RC201649, Right lane) cDNA for 48 hrs and lysed. Equivalent amounts of cell lysates (5 ug per lane) were separated by SDS-PAGE and immunoblotted with anti-HOXC10 (Cat# [TA808880])(1:2000). Positive lysates [LY413804] (100ug) and [LC413804] (20ug) can be purchased separately from OriGene.



Western blot validation of overexpression lysate (Cat# [LY413804]) using anti-DDK antibody (Cat# [TA50011-100]). Left: Cell lysates from untransfected HEK293T cells; Right: Cell lysates from HEK293T cells transfected with RC201649 using transfection reagent MegaTran 2.0 (Cat# [TT210002]).