

## Product datasheet for RC201640

### RAB1A (NM\_004161) Human Tagged ORF Clone

#### Product data:

**Product Type:** Expression Plasmids  
**Product Name:** RAB1A (NM\_004161) Human Tagged ORF Clone  
**Tag:** Myc-DDK  
**Symbol:** RAB1A  
**Synonyms:** RAB1; YPT1  
**Mammalian Cell Selection:** Neomycin  
**Vector:** pCMV6-Entry (PS100001)  
**E. coli Selection:** Kanamycin (25 ug/mL)  
**ORF Nucleotide Sequence:** >RC201640 ORF sequence  
Red=Cloning site Blue=ORF Green=Tags(s)

TTTTGTAATACGACTCACTATAGGGCGCCGGGAATTCGTCGACTGGATCCGGTACCGAGGAGATCTGCC  
GCC**CGATCGCC**

ATGTCCAGCATGAATCCCGAATATGATTATTTATTCAAGTTACTTCTGATTGGCGACTCAGGGGTTGGAA  
AGTCTTGCCTTCTTCTTAGGTTTGCAGATGATACATACAGAAAGCTACATCAGCACAATTGGTGTGGA  
TTTCAAATAAGAACTATAGAGTTAGACGGGAAAACAATCAAGCTTCAAATATGGGACACAGCAGGCCAG  
GAAAGATTTGGAACAATCACCTCCAGTTATTACAGAGGAGCCCATGGCATCATAGTTGTGTATGATGTGA  
CAGATCAGGAGTCTTCAATAATGTTAAACAGTGGCTGCAGGAAATAGATCGTTATGCCAGTGAAAATGT  
CAACAAATTGTTGGTAGGAACAAATGTGATCTGACCACAAAGAAAGTAGTAGACTACACAACAGCGAAG  
GAATTTGCTGATCCCTTGAATTCCGTTTTTGGAAACAGTGCTAAGAATGCAACGAATGTAGAACAGT  
CTTTCATGACGATGGCAGCTGAGATTAAGGCGAATGGGTCCCGGAGCAACAGCTGGTGGTGTGAGAA  
GTCCAATGTTAAATTCAGAGCACTCCAGTCAAGCAGTCAGGTGGAGGTTGCTGC

**ACGCGT**ACGCGGCCGCTCGAGCAGAACTCATCTCAGAAGAGGATCTGGCAGCAAATGATATCCTGGATT  
ACAAGGATGACGACGATAAGGTTTAA

**Protein Sequence:** >RC201640 protein sequence  
Red=Cloning site Green=Tags(s)

MSSMNPEDYLFKLLLIGDSGVGKSCLLLRFADDTYTESYISTIGVDFKIRTIELDGKTIKLIQIWDTAGQ  
ERFRTITSSYYRGAHGIIVVYDVTQESFNQVQWLQEIIDRYASENVNKLKLVGNKCDLTTKKVVDYTTAK  
EFADSLGIPFLETSAKNATNVEQSFMTMAAEIKKRMGPGATAGGAEKSNVKIQSTPVKQSGGGCC

**TRTRPLEQKLISEEDLAANDILDYKDDDDKV**



[View online »](#)

**Chromatograms:** [https://cdn.origene.com/chromatograms/mk6001\\_a07.zip](https://cdn.origene.com/chromatograms/mk6001_a07.zip)

**Restriction Sites:** SgfI-MluI

**Cloning Scheme:**



**ACCN:** NM\_004161

**ORF Size:** 615 bp

**OTI Disclaimer:** The molecular sequence of this clone aligns with the gene accession number as a point of reference only. However, individual transcript sequences of the same gene can differ through naturally occurring variations (e.g. polymorphisms), each with its own valid existence. This clone is substantially in agreement with the reference, but a complete review of all prevailing variants is recommended prior to use. [More info](#)

**OTI Annotation:** This clone was engineered to express the complete ORF with an expression tag. Expression varies depending on the nature of the gene.

**Components:** The ORF clone is ion-exchange column purified and shipped in a 2D barcoded Matrix tube containing 10ug of transfection-ready, dried plasmid DNA (reconstitute with 100 ul of water).

**Reconstitution Method:**

1. Centrifuge at 5,000xg for 5min.
2. Carefully open the tube and add 100ul of sterile water to dissolve the DNA.
3. Close the tube and incubate for 10 minutes at room temperature.
4. Briefly vortex the tube and then do a quick spin (less than 5000xg) to concentrate the liquid at the bottom.
5. Store the suspended plasmid at -20°C. The DNA is stable for at least one year from date of shipping when stored at -20°C.

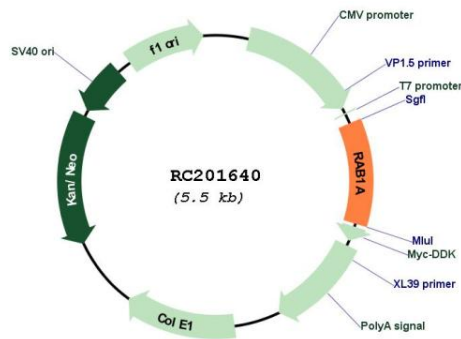
**Note:** Plasmids are not sterile. For experiments where strict sterility is required, filtration with 0.22um filter is required.

**RefSeq:** [NM\\_004161.5](#)

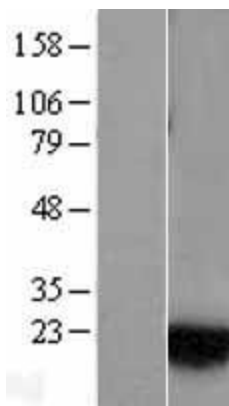
**RefSeq Size:** 2648 bp

RefSeq ORF:	618 bp
Locus ID:	5861
UniProt ID:	<a href="#">P62820</a>
Cytogenetics:	2p14
Domains:	ras, RAN, RAS, RHO, RAB, ARF
Protein Families:	Druggable Genome
MW:	22.7 kDa
Gene Summary:	This gene encodes a member of the Ras superfamily of GTPases. Members of the gene family cycle between inactive GDP-bound and active GTP-bound forms. This small GTPase controls vesicle traffic from the endoplasmic reticulum to the Golgi apparatus. Multiple alternatively spliced transcript variants have been identified for this gene which encode different protein isoforms. [provided by RefSeq, Oct 2008]

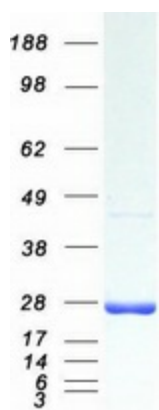
### Product images:



Circular map for RC201640



Western blot validation of overexpression lysate (Cat# [LY401338]) using anti-DDK antibody (Cat# [TA50011-100]). Left: Cell lysates from untransfected HEK293T cells; Right: Cell lysates from HEK293T cells transfected with RC201640 using transfection reagent MegaTran 2.0 (Cat# [TT210002]).



Coomassie blue staining of purified RAB1A protein (Cat# [TP301640]). The protein was produced from HEK293T cells transfected with RAB1A cDNA clone (Cat# RC201640) using MegaTran 2.0 (Cat# [TT210002]).