

Product datasheet for RC201639

CIRBP (NM_001280) Human Tagged ORF Clone

Product data:

Product Type: Expression Plasmids
Product Name: CIRBP (NM_001280) Human Tagged ORF Clone
Tag: Myc-DDK
Symbol: CIRBP
Synonyms: CIRP
Mammalian Cell Selection: Neomycin
Vector: pCMV6-Entry (PS100001)
E. coli Selection: Kanamycin (25 ug/mL)
ORF Nucleotide Sequence: >RC201639 ORF sequence
 Red=Cloning site Blue=ORF Green=Tags(s)

TTTTGTAATACGACTCACTATAGGGCGCCGGGAATTCGTCGACTGGATCCGGTACCGAGGAGATCTGCC
GCC**CGATCGCC**

ATGGCATCAGATGAAGGCCAACTTTTTGTTGGAGGGCTGAGTTTTGACACCAATGAGCAGTCGCTGGAGC
AGGTCTTCTCAAAGTACGGACAGATCTCTGAAGTGGTGGTTGTGAAAGACAGGGAGACCCAGAGATCTCG
GGGATTTGGGTTTGTACCTTTGAGAACATTGACGACGCTAAGGATGCCATGATGGCCATGAATGGGAAG
TCTGTAGATGGACGGCAGATCCGAGTAGACCAGGCAGGCAAGTCGTGACACAACCGATCCCGTGGGTACC
GTGGTGGCTCTGCCGGGGCCGGGGCTTCTCCGTGGGGCCGAGACGGGGCCGTGGGTTCTCTAGAGG
AGGAGGGGACCGAGGCTATGGGGGAACCGGTTTCGAGTCCAGGAGTGGGGCTACGGAGGCTCCAGAGAC
TACTATAGCAGCCGGAGTCAGAGTGGTGGCTACAGTGACCGGAGCTCGGGCGGGTCTACAGAGACAGTT
ACGACAGTTACGCTACACACAACGAG

ACGCGTACGCGGCCGCTCGAGCAGAACTCATCTCAGAAGAGGATCTGGCAGCAAATGATATCCTGGATT
ACAAGGATGACGACGATAAGGTTTAA

Protein Sequence: >RC201639 protein sequence
 Red=Cloning site Green=Tags(s)

MASDEGKLFVGGLSFDTNEQSLEQVFSKYGQISEVVVVKDRETQRSRGFGVTFENIDDAKDAMMAMNGK
SVDGRQIRVDQAGKSSDNRSRGYRGGASAGGRGFFRGGGRGRGRGFSRGGDRGYGGNRFESRSGGYGGSRD
YSSRSQSGGYSRSGGSYRDSYDSYATHNE

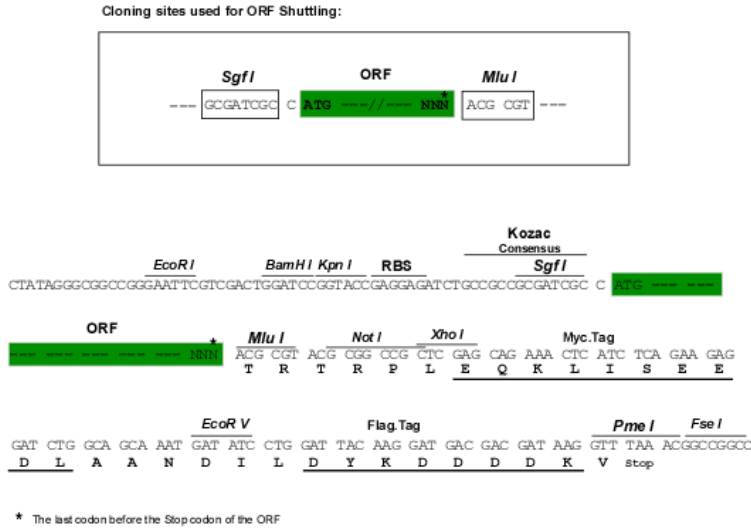
TRTRPLEQKLISEEDLAANDILDYKDDDDKV

Chromatograms: https://cdn.origene.com/chromatograms/mk6299_e07.zip



Restriction Sites: SgfI-MluI

Cloning Scheme:



ACCN: NM_001280

ORF Size: 516 bp

OTI Disclaimer: The molecular sequence of this clone aligns with the gene accession number as a point of reference only. However, individual transcript sequences of the same gene can differ through naturally occurring variations (e.g. polymorphisms), each with its own valid existence. This clone is substantially in agreement with the reference, but a complete review of all prevailing variants is recommended prior to use. [More info](#)

OTI Annotation: This clone was engineered to express the complete ORF with an expression tag. Expression varies depending on the nature of the gene.

Components: The ORF clone is ion-exchange column purified and shipped in a 2D barcoded Matrix tube containing 10ug of transfection-ready, dried plasmid DNA (reconstitute with 100 ul of water).

Reconstitution Method:

1. Centrifuge at 5,000xg for 5min.
2. Carefully open the tube and add 100ul of sterile water to dissolve the DNA.
3. Close the tube and incubate for 10 minutes at room temperature.
4. Briefly vortex the tube and then do a quick spin (less than 5000xg) to concentrate the liquid at the bottom.
5. Store the suspended plasmid at -20°C. The DNA is stable for at least one year from date of shipping when stored at -20°C.

Note: Plasmids are not sterile. For experiments where strict sterility is required, filtration with 0.22um filter is required.

RefSeq: [NM_001280.1](#), [NP_001271.1](#)

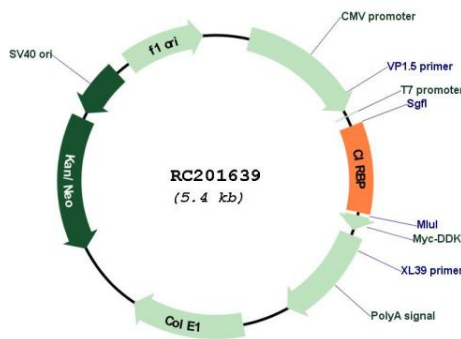
RefSeq Size: 1397 bp

RefSeq ORF: 519 bp

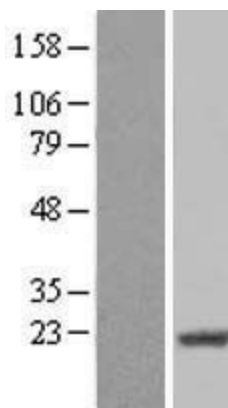
Locus ID: 1153
UniProt ID: [Q14011](#)
Cytogenetics: 19p13.3
Domains: RRM, RRM_1
MW: 18.6 kDa

Gene Summary: Cold-inducible mRNA binding protein that plays a protective role in the genotoxic stress response by stabilizing transcripts of genes involved in cell survival. Acts as a translational activator. Seems to play an essential role in cold-induced suppression of cell proliferation. Binds specifically to the 3'-untranslated regions (3' UTRs) of stress-responsive transcripts RPA2 and TXN. Acts as a translational repressor (By similarity). Promotes assembly of stress granules (SGs), when overexpressed.[UniProtKB/Swiss-Prot Function]

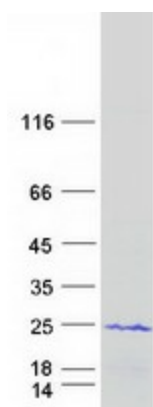
Product images:



Circular map for RC201639



Western blot validation of overexpression lysate (Cat# [LY420029]) using anti-DDK antibody (Cat# [TA50011-100]). Left: Cell lysates from untransfected HEK293T cells; Right: Cell lysates from HEK293T cells transfected with RC201639 using transfection reagent MegaTran 2.0 (Cat# [TT210002]).



Coomassie blue staining of purified CIRBP protein (Cat# [TP301639]). The protein was produced from HEK293T cells transfected with CIRBP cDNA clone (Cat# RC201639) using MegaTran 2.0 (Cat# [TT210002]).