

## Product datasheet for **RC201636L2V**

### SF2 (SRSF1) (NM\_006924) Human Tagged ORF Clone Lentiviral Particle

#### Product data:

Product Type:	Lentiviral Particles
Product Name:	SF2 (SRSF1) (NM_006924) Human Tagged ORF Clone Lentiviral Particle
Symbol:	SF2
Synonyms:	ASF; SF2; SF2p33; SFRS1; SRp30a
Mammalian Cell Selection:	None
Vector:	pLenti-C-mGFP (PS100071)
Tag:	mGFP
ACCN:	NM_006924
ORF Size:	744 bp
ORF Nucleotide Sequence:	The ORF insert of this clone is exactly the same as(RC201636).
OTI Disclaimer:	The molecular sequence of this clone aligns with the gene accession number as a point of reference only. However, individual transcript sequences of the same gene can differ through naturally occurring variations (e.g. polymorphisms), each with its own valid existence. This clone is substantially in agreement with the reference, but a complete review of all prevailing variants is recommended prior to use. <a href="#">More info</a>
OTI Annotation:	This clone was engineered to express the complete ORF with an expression tag. Expression varies depending on the nature of the gene.
RefSeq:	<a href="#">NM_006924.4</a>
RefSeq Size:	5468 bp
RefSeq ORF:	747 bp
Locus ID:	6426
UniProt ID:	<a href="#">Q07955</a>
Cytogenetics:	17q22
Domains:	RRM
Protein Families:	Stem cell - Pluripotency



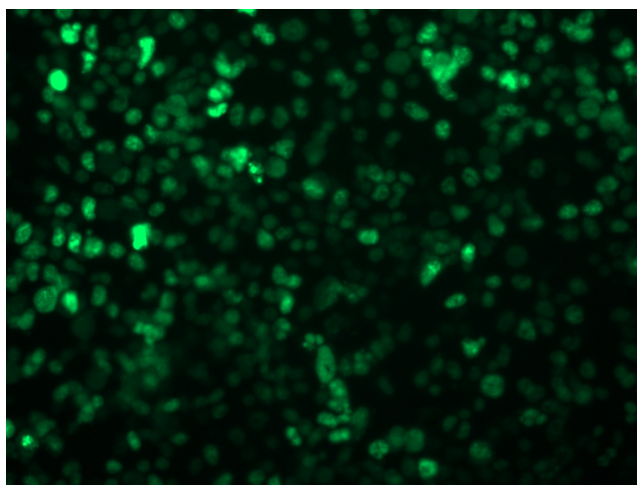
[View online »](#)

Protein Pathways: Spliceosome

MW: 27.7 kDa

Gene Summary: This gene encodes a member of the arginine/serine-rich splicing factor protein family. The encoded protein can either activate or repress splicing, depending on its phosphorylation state and its interaction partners. Multiple transcript variants have been found for this gene. There is a pseudogene of this gene on chromosome 13. [provided by RefSeq, Jun 2014]

### Product images:



[RC201636L2] was used to prepare Lentiviral particles using [TR30037] packaging kit. HEK293T cells were transduced with RC201636L2V particle to overexpress human SRSF1-mGFP fusion protein.