

Product datasheet for **RC201636**

SF2 (SRSF1) (NM_006924) Human Tagged ORF Clone

Product data:

Product Type:	Expression Plasmids
Product Name:	SF2 (SRSF1) (NM_006924) Human Tagged ORF Clone
Tag:	Myc-DDK
Symbol:	SF2
Synonyms:	ASF; SF2; SF2p33; SFRS1; SRp30a
Mammalian Cell Selection:	Neomycin
Vector:	pCMV6-Entry (PS100001)
E. coli Selection:	Kanamycin (25 ug/mL)
ORF Nucleotide Sequence:	>RC201636 ORF sequence Red=Cloning site Blue=ORF Green=Tags(s)

TTTTGTAATACGACTCACTATAGGGCGGCCGGAATTCGTCGACTGGATCCGGTACCGAGGAGATCTGCC
GCC**CGATCGCC**

ATGTCGGGAGGTGGTGTGATTTCGTGGCCCCGAGGAACAACGATTGCCGCATCTACGTGGGTAACCTTAC
CTCCAGACATCCGAACCAAGGACATTGAGGACGTGTTCTACAAATACGGCGCTATCCGCGACATCGACCT
CAAGAATCGCCGCGGGGACCGCCCTTCGCCTTCGTTGAGTTCGAGGACCCGCGAGACCGGAAGACGCG
GTGTATGGTCCGACGGCTATGATTACGATGGTACCGTCTGCGGGTGGAGTTTCTCGAAGCGGCCGTG
GAACAGGCCGAGGCGGCGGGGTGGAGGTGGCGGAGCTCCCGAGGTCGCTATGGCCCCCATCCAG
GCGGTCTGAAAACAGAGTGGTTGTCTCTGGACTGCCTCCAAGTGAAGTTGGCAGGATTTAAAGGATCAC
ATGCGTGAAGCAGGTGATGATGTTATGCTGATGTTTACCAGATGGCACTGGTGTGCTGGAGTTTGTAC
GGAAAGAAGATATGACCTATGCAGTTTCGAAAACGGATAACACTAAGTTTAGATCTCATGAGGGAGAAAAC
TGCTTACATCCGGTTAAAGTTGATGGGCCAGAAAGTCCAAGTTATGGAAGATCTCGATCTCGAAGCCGT
AGTCGTAGCAGAAGCCGTAGCAGAAGCAACAGCAGGAGTCGCAGTTACTCCCAAGGAGAAGCAGAGGAT
CACCACGCTATTCTCCCGTCATAGCAGATCTCGCTCTCGTACA

ACGCGTACGCGGCCGCTCGAGCAGAAACTCATCTCAGAAGAGGATCTGGCAGCAAATGATATCCTGGATT
ACAAGGATGACGACGATAAGGTTTAA



[View online »](#)

Protein Sequence: >RC201636 protein sequence
 Red=Cloning site Green=Tags(s)

MSGGGVIRGPAGNDCRIYVGNLPPDIRTKDIEDVFYKYGAIRDIDLKRRGGPPFAFVEFEDPRDAEDA
 VYGRDGYDYDGYRLRVEFPRSGRGTGRGGGGGGGGAPRGRYPSPRRSENRRVVVSLPPSGSWQLKDH
 MREAGDVCYADVYRDGTGVVEFVRKEDMTYAVRKL DNTKFRSHEGETAYIRVKVDGPRSPSYGRSRSR
 SRSRSRSRNSRSRSYSPRRSRGSPRYSRHSRSRSRT

TRTRPLEQKLISEEDLAANDILDYKDDDDKV

Chromatograms: https://cdn.origene.com/chromatograms/mk6074_e10.zip

Restriction Sites: SgfI-MluI

Cloning Scheme:

Cloning sites used for ORF Shuttling:



* The last codon before the Stop codon of the ORF

ACCN: NM_006924

ORF Size: 744 bp

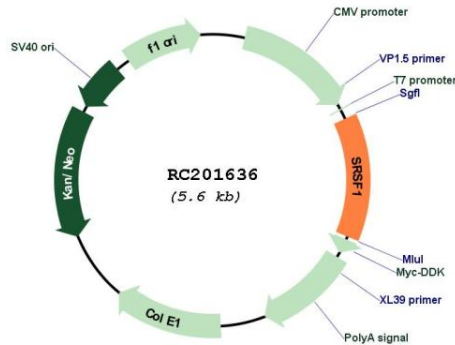
OTI Disclaimer: The molecular sequence of this clone aligns with the gene accession number as a point of reference only. However, individual transcript sequences of the same gene can differ through naturally occurring variations (e.g. polymorphisms), each with its own valid existence. This clone is substantially in agreement with the reference, but a complete review of all prevailing variants is recommended prior to use. [More info](#)

OTI Annotation: This clone was engineered to express the complete ORF with an expression tag. Expression varies depending on the nature of the gene.

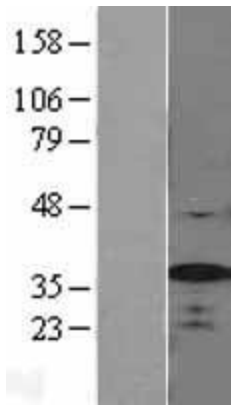
Components: The ORF clone is ion-exchange column purified and shipped in a 2D barcoded Matrix tube containing 10ug of transfection-ready, dried plasmid DNA (reconstitute with 100 ul of water).

Reconstitution Method:	<ol style="list-style-type: none">1. Centrifuge at 5,000xg for 5min.2. Carefully open the tube and add 100ul of sterile water to dissolve the DNA.3. Close the tube and incubate for 10 minutes at room temperature.4. Briefly vortex the tube and then do a quick spin (less than 5000xg) to concentrate the liquid at the bottom.5. Store the suspended plasmid at -20°C. The DNA is stable for at least one year from date of shipping when stored at -20°C.
Note:	Plasmids are not sterile. For experiments where strict sterility is required, filtration with 0.22um filter is required.
RefSeq:	NM_006924.5
RefSeq Size:	5468 bp
RefSeq ORF:	747 bp
Locus ID:	6426
UniProt ID:	Q07955
Cytogenetics:	17q22
Domains:	RRM
Protein Families:	Stem cell - Pluripotency
Protein Pathways:	Spliceosome
MW:	27.7 kDa
Gene Summary:	This gene encodes a member of the arginine/serine-rich splicing factor protein family. The encoded protein can either activate or repress splicing, depending on its phosphorylation state and its interaction partners. Multiple transcript variants have been found for this gene. There is a pseudogene of this gene on chromosome 13. [provided by RefSeq, Jun 2014]

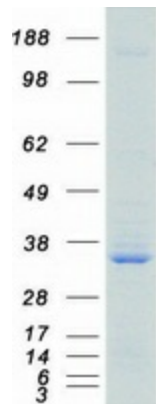
Product images:



Circular map for RC201636



Western blot validation of overexpression lysate (Cat# [LY402060]) using anti-DDK antibody (Cat# [TA50011-100]). Left: Cell lysates from untransfected HEK293T cells; Right: Cell lysates from HEK293T cells transfected with RC201636 using transfection reagent MegaTran 2.0 (Cat# [TT210002]).



Coomassie blue staining of purified SRSF1 protein (Cat# [TP301636]). The protein was produced from HEK293T cells transfected with SRSF1 cDNA clone (Cat# RC201636) using MegaTran 2.0 (Cat# [TT210002]).