

Product datasheet for RC201634

PPP1R7 (NM_002712) Human Tagged ORF Clone

Product data:

Product Type: Expression Plasmids
Product Name: PPP1R7 (NM_002712) Human Tagged ORF Clone
Tag: Myc-DDK
Symbol: PPP1R7
Synonyms: SDS22
Mammalian Cell Selection: Neomycin
Vector: pCMV6-Entry (PS100001)
E. coli Selection: Kanamycin (25 ug/mL)
ORF Nucleotide Sequence: >RC201634 ORF sequence
 Red=Cloning site Blue=ORF Green=Tags(s)

TTTTGTAATACGACTCACTATAGGGCGGCCGGAATTCGTCGACTGGATCCGGTACCGAGGAGATCTGCC
 GCC**CGATCGC**C

ATGGCGCGGAACGCGCGCGGGCAGCAACAGTCGCAGGAGATGATGGAGGTTGACAGGCGGGTCGAGT
 CTGAAGAATCCGGCGATGAAGAAGGGAAGAAACACAGCAGTGGCATCGTGGCCGACCTCAGTGAACAGAG
 CCTGAAGGATGGGAGGAGCGGGGGAGGAGGCCAGAAGAAGAACATGAGCTGCCTGTGGACATGGAA
 ACCATCAACCTGGACAGAGATGCAGAGGATGTTGATTTGAATCACTATCGCATAGGAAGATTGAAGGAT
 TTGAGGTACTGAAGAAAGTGAAGACTCTCTGCCTCCGCCAAAATTTAATTAATGCATTGAGAATCTGGA
 GGAGCTACAGAGTCTTCGAGAGCTGGATCTTTACGACAACCAGATCAAGAAGATTGAGAATCTGGAGGCG
 CTAACAGAGCTGGAGATTCTAGATATTTCTTTAATCTGCTGAGAAACATCGAAGGGTTGACAAGTTGA
 CACGACTGAAAAAATCTTCTTGGTCAACAATAAAATCAGTAAAAATTGAGAACTTAAGCAACTTACATCA
 ACTACAGATGCTAGAGCTGGGATCTAACCCGATCCGGGCAATCGAAAATATCGACACCTTAACCAACCTG
 GAGAGTTGTTTTGGGAAAAACAAAATTAATAAATTCAGAACCTGGATGCGCTACCAACCTGACAG
 TCCTCAGTATGCAGAGCAACCGGCTGACCAAGATCGAGGGTCTGCAGAACCTGGTGAACCTGCGGGAGCT
 GTACCTTAGCCACAATGGCATCGAGGTCATCGAGGGCTTGAGAAACAATAACAACTCACGATGTTGGAC
 ATTGCATCAAATAGAATCAAAAAGATTGAAAATATCAGCCATCTAACAGAGCTGCAAGAGTCTGGATGA
 ACGACAATCTCCTTGAGAGCTGGAGCGACCTCGACGAGCTGAAGGGAGCCAGGAGCTGGAGACAGTGTA
 CCTGGAGCGGAACCCCTTGCAGAAGGACCCCACTACCGCGGAAGGTCATGCTCGCCCTCCCCTCCGTG
 CGGCAGATCGATGCCACGTTCTGTCAGGTTT

ACGCGTACGCGGCCGCTCGAGCAGAAACTCATCTCAGAAGAGGATCTGGCAGCAAATGATATCCTGGATT
 ACAAGGATGACGACGATAAGGTTTAA



[View online »](#)

Protein Sequence: >RC201634 protein sequence
Red=Cloning site Green=Tags(s)

MAAERGAGQQSQEMMEVDRRVESEESGDDEEGKKHSSGI VADLSEQSLKDGEERGEEDPEEEHEL PVDME
 TINLDRDAEDVDLNHYRIGKIEGFEVLKKVKTLC LRQNL IKCIENLEELQSLRELDLYDNQIKKIENLEA
 L TELEILD ISFNLLRNIEGVDKLTRLKKLFLVNNKISKIENLSNLHQLQMLELGSNRIRAIENIDTLTNL
 ESLFLGKNKITKLQNL DALTNLTVLSMQSNRLTKIEGLQNLVNLREL YLSHNGIEVIEGLENNNKL TMLD
 IASNRICKIENISHLTELQEFWMNDNLLESWSDLDELKGARSLETVYLERNPLQKDPQYRRKVMLALPSV
 RQIDATFVRP

TRTRPLEQKLISEEDLAANDILDYKDDDDKV

Chromatograms: https://cdn.origene.com/chromatograms/mk6004_a07.zip

Restriction Sites: SgfI-MluI

Cloning Scheme:



ACCN: NM_002712

ORF Size: 1080 bp

OTI Disclaimer: The molecular sequence of this clone aligns with the gene accession number as a point of reference only. However, individual transcript sequences of the same gene can differ through naturally occurring variations (e.g. polymorphisms), each with its own valid existence. This clone is substantially in agreement with the reference, but a complete review of all prevailing variants is recommended prior to use. [More info](#)

OTI Annotation: This clone was engineered to express the complete ORF with an expression tag. Expression varies depending on the nature of the gene.

Components: The ORF clone is ion-exchange column purified and shipped in a 2D barcoded Matrix tube containing 10ug of transfection-ready, dried plasmid DNA (reconstitute with 100 ul of water).

Reconstitution Method:

1. Centrifuge at 5,000xg for 5min.
2. Carefully open the tube and add 100ul of sterile water to dissolve the DNA.
3. Close the tube and incubate for 10 minutes at room temperature.
4. Briefly vortex the tube and then do a quick spin (less than 5000xg) to concentrate the liquid at the bottom.
5. Store the suspended plasmid at -20°C. The DNA is stable for at least one year from date of shipping when stored at -20°C.

RefSeq: [NM_002712.3](#)

RefSeq Size: 2761 bp

RefSeq ORF: 1083 bp

Locus ID: 5510

UniProt ID: [Q15435](#)

Cytogenetics: 2q37.3

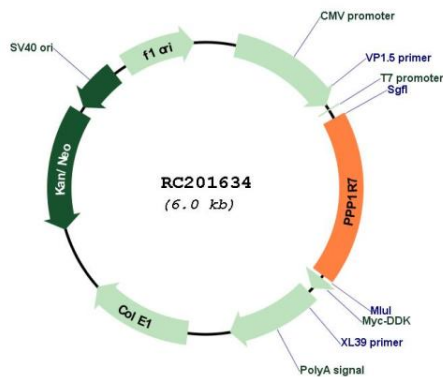
Domains: LRR, LRR_TYP, LRRcap, LRR_SD22

Protein Families: Druggable Genome, Phosphatase

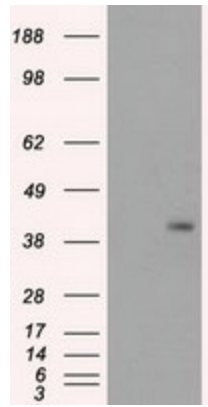
MW: 41.6 kDa

Gene Summary: This gene encodes a protein subunit that regulates the activity of the serine/threonine phosphatase, protein phosphatase-1. The encoded protein is required for completion of the mitotic cycle and for targeting protein phosphatase-1 to mitotic kinetochores. Alternate splicing results in multiple transcript variants. [provided by RefSeq, Sep 2013]

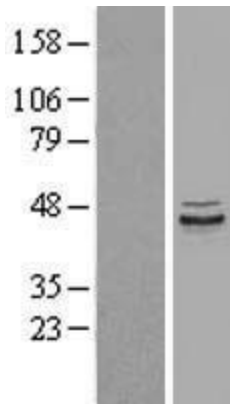
Product images:



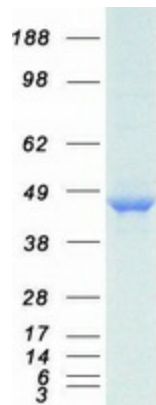
Circular map for RC201634



HEK293T cells were transfected with the pCMV6-ENTRY control (Cat# [PS100001], Left lane) or pCMV6-ENTRY PPP1R7 (Cat# RC201634, Right lane) cDNA for 48 hrs and lysed. Equivalent amounts of cell lysates (5 ug per lane) were separated by SDS-PAGE and immunoblotted with anti-PPP1R7(Cat# [TA500614]). Positive lysates [LY400956] (100ug) and [LC400956] (20ug) can be purchased separately from OriGene.



Western blot validation of overexpression lysate (Cat# [LY400956]) using anti-DDK antibody (Cat# [TA50011-100]). Left: Cell lysates from untransfected HEK293T cells; Right: Cell lysates from HEK293T cells transfected with RC201634 using transfection reagent MegaTran 2.0 (Cat# [TT210002]).



Coomassie blue staining of purified PPP1R7 protein (Cat# [TP301634]). The protein was produced from HEK293T cells transfected with PPP1R7 cDNA clone (Cat# RC201634) using MegaTran 2.0 (Cat# [TT210002]).