

Product datasheet for RC201633

SCAMP3 (NM_005698) Human Tagged ORF Clone

Product data:

Product Type:	Expression Plasmids
Product Name:	SCAMP3 (NM_005698) Human Tagged ORF Clone
Tag:	Myc-DDK
Symbol:	SCAMP3
Synonyms:	C1orf3
Mammalian Cell Selection:	Neomycin
Vector:	pCMV6-Entry (PS100001)
E. coli Selection:	Kanamycin (25 ug/mL)
ORF Nucleotide Sequence:	>RC201633 ORF sequence Red=Cloning site Blue=ORF Green=Tags(s)

TTTTGTAATACGACTCACTATAGGGCGGCCGGAATTCGTCGACTGGATCCGGTACCGAGGAGATCTGCC
GCC**CGATCGCC**

ATGGCTCAGAGCAGAGACGGCGGAAACCCGTTCCGCCGAGCCAGCGAGCTTGACAACCCCTTTCAGGACC
CAGCTGTGATCCAGCACCGACCCAGCCGGCAGTATGCCACGCTTGACGTCTACAACCCCTTTGAGACCCG
GGAGCCACCACCAGCCTATGAGCCTCCAGCCCTGCCCATTCCTCCACCCTCAGCTCCCTCCTTGAC
CCCTCGAGAAAGCTCAGCCCACAGAACCTAAGAACTATGGCTCATAACAGCACTCAGGCCTCAGTCGAC
CAGCCACAGCTGAGCTGCTGAAGAAACAGGAGGAGCTCAACCGGAAGGCAGAGGAGTTGGACCGAAGGGA
GCGAGAGCTGCAGCATGCTGCCCTGGGGGACAGCTACTCGACAGAACAATTGGCCCCCTACCTTCT
TTTTGTCCAGTTCAGCCCTGCTTTTCCAGGACATCTCCATGGAGATCCCCAAGAATTTAGAAGACTG
TATCCACCATGTACTACCTCTGGATGTGCAGCAGCTGGCTCTTCTCCTGAACTTCTCGCCTGCCTGGC
CAGTTTCTGTGTGAAACCAACAATGGCGCAGGCTTTGGGCTTTCTATCCTCTGGGTCTCCTTTTCACT
CCCTGCTCCTTTGTCTGCTGGTACCGCCCCATGTATAAGGCTTTCCGGAGTGACAGTTCAATTTCT
TCGTTTTCTTCTCATTTTCTTCGTCCAGGATGTGCTCTTTGTCTCCAGGCCATTGGTATCCCAGGTTG
GGGATTCAGTGGCTGGATCTCTGCTCTGGTGGTGCCGAAGGGCAACACAGCAGTATCCGTGCTCATGCTG
CTGGTCGCCCTGCTTTCAGTGGCATTGCTGTGCTAGGAATTGTCATGCTGAAACGGATCCACTCCTTAT
ACGCGCCGACAGGTGCCAGCTTTCAGAAGGCCAGCAAGAATTTGCTGCTGGTGTCTTCCAACCCCTGC
GGTGCAACCGCAGCTGCCAATGCAGCCGCTGGGGCTGCTGAAAATGCCTTCCGGGCCCCG

ACGCGTACGCGGCCGCTCGAGCAGAAACTCATCTCAGAAGAGGATCTGGCAGCAATGATATCCTGGATT
ACAAGGATGACGACGATAAGGTTTAA



[View online »](#)

Protein Sequence: >RC201633 protein sequence
Red=Cloning site Green=Tags(s)

MAQSRDGGNPF AEPSELNPFQDP AVIQHRPSRQYATLDVYNPFETREPPPAYEPPAPAPLPPPSAPSLQ
 PSRKLSPTEPKNYGSYSTQASAAAATAELLKKQEELNRKAEELDRRERELQHAALGGTATRQNNWPPLPS
 FCPVQPCFFQDISMEIPQEFQKT VSTMYLWMCSTLALLLNFLACLASFVETNNGAGFGLSILWVLLFT
 PCSFVCWYRPMYKAFRSDSSFNFFVFFF IFFVQDVL FVLQAIGIPGWGFSGWISALVVPKNTAVSVLML
 LVALLFTGI AVLGI VMLKRIHSLYRRRTGAS FQKAQ QEF AAGVFSNP AVRTAAANAAAGAAENAFRAP

TRTRPLEQKLISEEDLAANDILDYKDDDDKV

Chromatograms: https://cdn.origene.com/chromatograms/mk6001_b04.zip

Restriction Sites: SgfI-MluI

Cloning Scheme:



ACCN: NM_005698

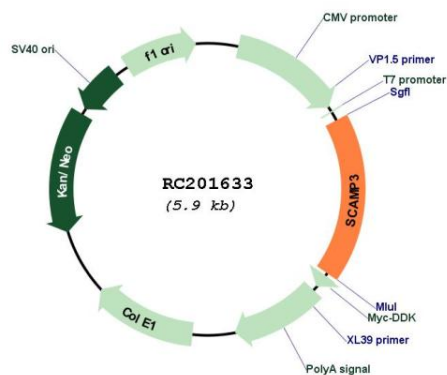
ORF Size: 1041 bp

OTI Disclaimer: Due to the inherent nature of this plasmid, standard methods to replicate additional amounts of DNA in E. coli are highly likely to result in mutations and/or rearrangements. Therefore, OriGene does not guarantee the capability to replicate this plasmid DNA. Additional amounts of DNA can be purchased from OriGene with batch-specific, full-sequence verification at a reduced cost. Please contact our customer care team at custsupport@origene.com or by calling 301.340.3188 option 3 for pricing and delivery.

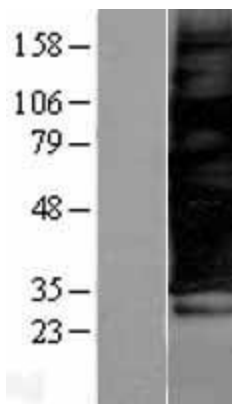
The molecular sequence of this clone aligns with the gene accession number as a point of reference only. However, individual transcript sequences of the same gene can differ through naturally occurring variations (e.g. polymorphisms), each with its own valid existence. This clone is substantially in agreement with the reference, but a complete review of all prevailing variants is recommended prior to use. [More info](#)

OTI Annotation:	This clone was engineered to express the complete ORF with an expression tag. Expression varies depending on the nature of the gene.
Components:	The ORF clone is ion-exchange column purified and shipped in a 2D barcoded Matrix tube containing 10ug of transfection-ready, dried plasmid DNA (reconstitute with 100 ul of water).
Reconstitution Method:	<ol style="list-style-type: none">1. Centrifuge at 5,000xg for 5min.2. Carefully open the tube and add 100ul of sterile water to dissolve the DNA.3. Close the tube and incubate for 10 minutes at room temperature.4. Briefly vortex the tube and then do a quick spin (less than 5000xg) to concentrate the liquid at the bottom.5. Store the suspended plasmid at -20°C. The DNA is stable for at least one year from date of shipping when stored at -20°C.
Note:	Plasmids are not sterile. For experiments where strict sterility is required, filtration with 0.22um filter is required.
RefSeq:	NM_005698.4
RefSeq Size:	1595 bp
RefSeq ORF:	1044 bp
Locus ID:	10067
UniProt ID:	O14828
Cytogenetics:	1q22
Domains:	SCAMP
Protein Families:	Transmembrane
MW:	38.3 kDa
Gene Summary:	This gene encodes an integral membrane protein that belongs to the secretory carrier membrane protein family. The encoded protein functions as a carrier to the cell surface in post-golgi recycling pathways. This protein is also involved in protein trafficking in endosomal pathways. Two transcript variants encoding different isoforms have been found for this gene. [provided by RefSeq, May 2011]

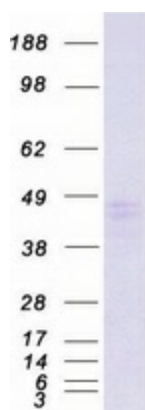
Product images:



Circular map for RC201633



Western blot validation of overexpression lysate (Cat# [LY401740]) using anti-DDK antibody (Cat# [TA50011-100]). Left: Cell lysates from untransfected HEK293T cells; Right: Cell lysates from HEK293T cells transfected with RC201633 using transfection reagent MegaTran 2.0 (Cat# [TT210002]).



Coomassie blue staining of purified SCAMP3 protein (Cat# [TP301633]). The protein was produced from HEK293T cells transfected with SCAMP3 cDNA clone (Cat# RC201633) using MegaTran 2.0 (Cat# [TT210002]).