

Product datasheet for **RC201629L4V**

Beclin 1 (BECN1) (NM_003766) Human Tagged ORF Clone Lentiviral Particle

Product data:

Product Type:	Lentiviral Particles
Product Name:	Beclin 1 (BECN1) (NM_003766) Human Tagged ORF Clone Lentiviral Particle
Symbol:	Beclin 1
Synonyms:	ATG6; beclin1; VPS30
Mammalian Cell Selection:	Puromycin
Vector:	pLenti-C-mGFP-P2A-Puro (PS100093)
Tag:	mGFP
ACCN:	NM_003766
ORF Size:	1350 bp
ORF Nucleotide Sequence:	The ORF insert of this clone is exactly the same as(RC201629).
OTI Disclaimer:	The molecular sequence of this clone aligns with the gene accession number as a point of reference only. However, individual transcript sequences of the same gene can differ through naturally occurring variations (e.g. polymorphisms), each with its own valid existence. This clone is substantially in agreement with the reference, but a complete review of all prevailing variants is recommended prior to use. More info
OTI Annotation:	This clone was engineered to express the complete ORF with an expression tag. Expression varies depending on the nature of the gene.
RefSeq:	NM_003766.2
RefSeq Size:	2144 bp
RefSeq ORF:	1353 bp
Locus ID:	8678
UniProt ID:	Q14457
Cytogenetics:	17q21.31
Domains:	APG6
Protein Families:	Druggable Genome



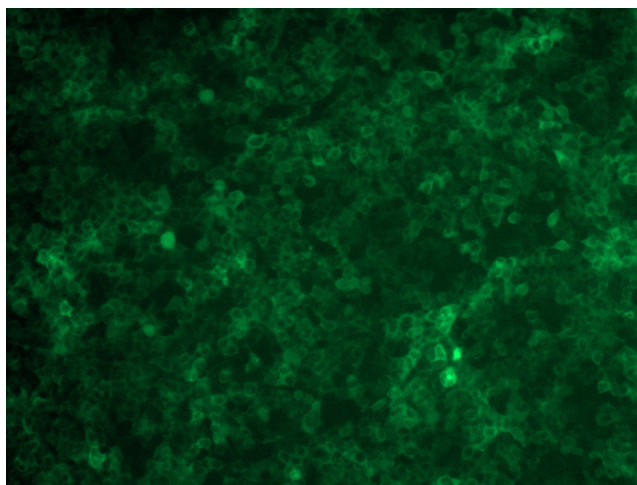
[View online »](#)

Protein Pathways: Regulation of autophagy

MW: 51.7 kDa

Gene Summary: This gene encodes a protein that regulates autophagy, a catabolic process of degradation induced by starvation. The encoded protein is a component of the phosphatidylinositol-3-kinase (PI3K) complex which mediates vesicle-trafficking processes. This protein is thought to play a role in multiple cellular processes, including tumorigenesis, neurodegeneration and apoptosis. Alternative splicing results in multiple transcript variants. [provided by RefSeq, Sep 2015]

Product images:



[RC201629L4] was used to prepare Lentiviral particles using [TR30037] packaging kit. HEK293T cells were transduced with RC201629L4V particle to overexpress human BECN1-mGFP fusion protein.