

Product datasheet for RC201624

BET1 (NM_005868) Human Tagged ORF Clone

Product data:

Product Type: Expression Plasmids
Product Name: BET1 (NM_005868) Human Tagged ORF Clone
Tag: Myc-DDK
Symbol: BET1
Synonyms: HBET1
Mammalian Cell Selection: Neomycin
Vector: pCMV6-Entry (PS100001)
E. coli Selection: Kanamycin (25 ug/mL)
ORF Nucleotide Sequence: >RC201624 ORF sequence
Red=Cloning site Blue=ORF Green=Tags(s)

TTTTGTAATACGACTCACTATAGGGCGCCGGGAATTCGTCGACTGGATCCGGTACCGAGGAGATCTGCC
GCC**CGATCGCC**

ATGAGGCGTGCAGGCCTGGGTGAAGGAGTACCTCCTGGCAACTATGGAACTATGGCTATGCTAATAGTG
GGTATAGTGCCTGTGAAGAAGAAAATGAGAGGCTCACTGAAAGTCTGAGAAGCAAAGTAAGTCTATAAA
ATCTCTTTCCATTGAAATAGGCCATGAAGTTAAAACCCAGAATAAATTATTAGCTGAAATGGATTACAA
TTTGATTCCACAAGTGGATTTCTAGGTAAGTAACTATGGGCAAACTGAAGATTTTATCCAGAGGGAGCCAA
CAAAGCTGCTGTGCTATATGATGCTGTTTTCTTTATTTGTCTTTTTATCATTATTGGATTATTAAGT
GAGG

ACGCGTACGCGGCCGCTCGAGCAGAACTCATCTCAGAAGAGGATCTGGCAGCAAATGATATCCTGGATT
ACAAGGATGACGACGATAAGGTTTAA

Protein Sequence: >RC201624 protein sequence
Red=Cloning site Green=Tags(s)

MRRAGLGEGVPPGNYGNYGYANSYSACEEENERLTESLSKVTAIKSLSIEIGHEVKTQNKLLAEMDSQ
FDSTTGFLGKTMGKLIKLSRGSQTKLLCYMMLFSLFVFFIIYWIILKLR

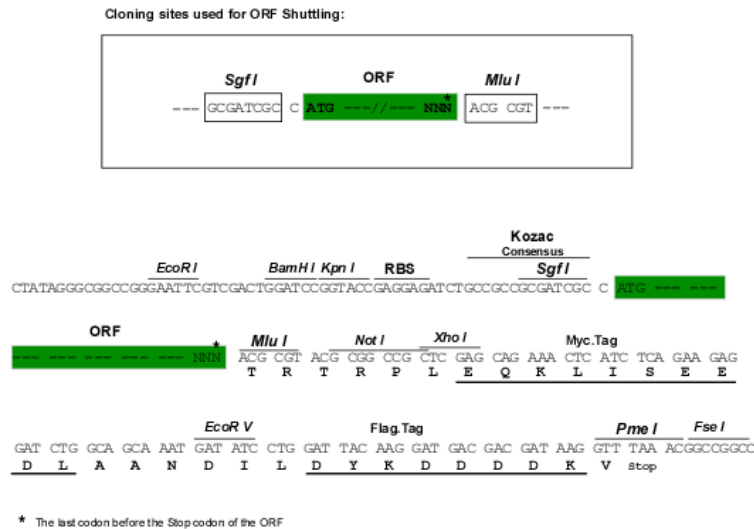
TRTRPLEQKLISEEDLAANDILDYKDDDDKV

Chromatograms: https://cdn.origene.com/chromatograms/mk6299_e10.zip

Restriction Sites: Sgfl-MluI



[View online »](#)

Cloning Scheme:


ACCN: NM_005868

ORF Size: 354 bp

OTI Disclaimer: The molecular sequence of this clone aligns with the gene accession number as a point of reference only. However, individual transcript sequences of the same gene can differ through naturally occurring variations (e.g. polymorphisms), each with its own valid existence. This clone is substantially in agreement with the reference, but a complete review of all prevailing variants is recommended prior to use. [More info](#)

OTI Annotation: This clone was engineered to express the complete ORF with an expression tag. Expression varies depending on the nature of the gene.

Components: The ORF clone is ion-exchange column purified and shipped in a 2D barcoded Matrix tube containing 10ug of transfection-ready, dried plasmid DNA (reconstitute with 100 ul of water).

Reconstitution Method:

1. Centrifuge at 5,000xg for 5min.
2. Carefully open the tube and add 100ul of sterile water to dissolve the DNA.
3. Close the tube and incubate for 10 minutes at room temperature.
4. Briefly vortex the tube and then do a quick spin (less than 5000xg) to concentrate the liquid at the bottom.
5. Store the suspended plasmid at -20°C. The DNA is stable for at least one year from date of shipping when stored at -20°C.

RefSeq: [NM_005868.6](#)

RefSeq Size: 3061 bp

RefSeq ORF: 357 bp

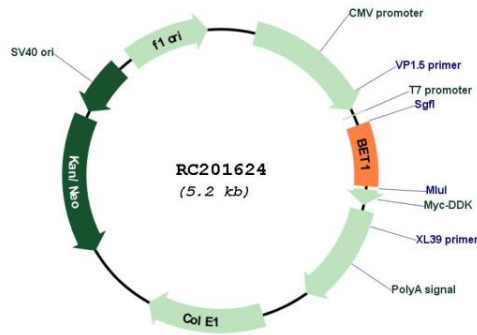
Locus ID: 10282

UniProt ID: [O15155](#)

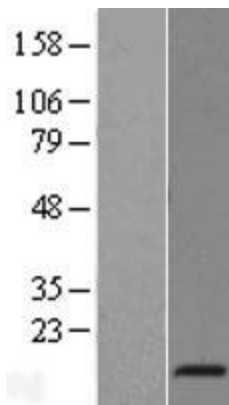
Cytogenetics: 7q21.3
Domains: t_SNARE
Protein Families: Druggable Genome, Transmembrane
Protein Pathways: SNARE interactions in vesicular transport
MW: 13.3 kDa

Gene Summary: This gene encodes a golgi-associated membrane protein that participates in vesicular transport from the endoplasmic reticulum (ER) to the Golgi complex. The encoded protein functions as a soluble N-ethylmaleimide-sensitive factor attachment protein receptor and may be involved in the docking of ER-derived vesicles with the cis-Golgi membrane. Alternative splicing results in multiple transcript variants. [provided by RefSeq, Dec 2015]

Product images:



Circular map for RC201624



Western blot validation of overexpression lysate (Cat# [LY417010]) using anti-DDK antibody (Cat# [TA50011-100]). Left: Cell lysates from untransfected HEK293T cells; Right: Cell lysates from HEK293T cells transfected with RC201624 using transfection reagent MegaTran 2.0 (Cat# [TT210002]).