

Product datasheet for **RC201616**

S100A4 (NM_019554) Human Tagged ORF Clone

Product data:

Product Type: Expression Plasmids
Product Name: S100A4 (NM_019554) Human Tagged ORF Clone
Tag: Myc-DDK
Symbol: S100A4
Synonyms: 18A2; 42A; CAPL; FSP1; MTS1; P9KA; PEL98
Mammalian Cell Selection: Neomycin
Vector: pCMV6-Entry (PS100001)
E. coli Selection: Kanamycin (25 ug/mL)
ORF Nucleotide Sequence: >RC201616 ORF sequence
Red=Cloning site Blue=ORF Green=Tags(s)

TTTTGTAATACGACTCACTATAGGGCGGCCGGAATTCGTCGACTGGATCCGGTACCGAGGAGATCTGCC
GCC**CGGATCGCC**

ATGGCGTGCCTCTGGAGAAGGCCCTGGATGTGATGGTGTCCACCTTCCACAAGTACTCGGGCAAAGAGG
GTGACAAGTTCAAGCTCAACAAGTCAGAGCTAAAGGAGCTGTGACCCGGGAGCTGCCAGCTTCTTGGG
GAAAAGGACAGATGAAGCTGCTTCCAGAAGCTGATGAGCAACTGGACAGCAACAGGGACAACGAGGTG
GACTTCCAAGAGTACTGTGTCTTCTGTCTGCATCGCCATGATGTGTAACGAATCTTTGAAGGCTTCC
CAGATAAGCAGCCAGGAAGAAA

ACGCGTACGCGGCCGCTCGAGCAGAACTCATCTCAGAAGAGGATCTGGCAGCAAATGATATCCTGGATT
ACAAGGATGACGACGATAAGGTTTAA

Protein Sequence: >RC201616 protein sequence
Red=Cloning site Green=Tags(s)
MACPLEKALDVMVSTFHKYSGKEGDKFKLNKSELKELLTRELPSFLGKRTDEAAFQKLMSNLDNSRDNEV
DFQEYCVFLSCIAMMCNEFFEGFPDKQPRKK

TRTRPLEQKLISEEDLAANDILDYKDDDDKV

Chromatograms: https://cdn.origene.com/chromatograms/mk6055_c10.zip

Restriction Sites: SgfI-MluI



[View online »](#)

Cloning Scheme:


ACCN: NM_019554

ORF Size: 303 bp

OTI Disclaimer: The molecular sequence of this clone aligns with the gene accession number as a point of reference only. However, individual transcript sequences of the same gene can differ through naturally occurring variations (e.g. polymorphisms), each with its own valid existence. This clone is substantially in agreement with the reference, but a complete review of all prevailing variants is recommended prior to use. [More info](#)

OTI Annotation: This clone was engineered to express the complete ORF with an expression tag. Expression varies depending on the nature of the gene.

Components: The ORF clone is ion-exchange column purified and shipped in a 2D barcoded Matrix tube containing 10ug of transfection-ready, dried plasmid DNA (reconstitute with 100 ul of water).

Reconstitution Method:

1. Centrifuge at 5,000xg for 5min.
2. Carefully open the tube and add 100ul of sterile water to dissolve the DNA.
3. Close the tube and incubate for 10 minutes at room temperature.
4. Briefly vortex the tube and then do a quick spin (less than 5000xg) to concentrate the liquid at the bottom.
5. Store the suspended plasmid at -20°C. The DNA is stable for at least one year from date of shipping when stored at -20°C.

RefSeq: [NM_019554.3](#)

RefSeq Size: 564 bp

RefSeq ORF: 306 bp

Locus ID: 6275

UniProt ID: [P26447](#)

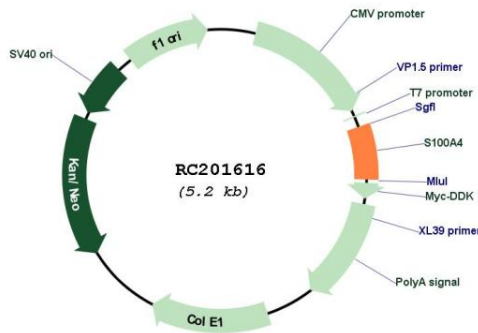
Cytogenetics: 1q21.3

Domains: S_100, EFh

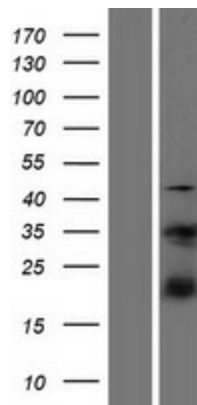
MW: 11.7 kDa

Gene Summary: The protein encoded by this gene is a member of the S100 family of proteins containing 2 EF-hand calcium-binding motifs. S100 proteins are localized in the cytoplasm and/or nucleus of a wide range of cells, and involved in the regulation of a number of cellular processes such as cell cycle progression and differentiation. S100 genes include at least 13 members which are located as a cluster on chromosome 1q21. This protein may function in motility, invasion, and tubulin polymerization. Chromosomal rearrangements and altered expression of this gene have been implicated in tumor metastasis. Multiple alternatively spliced variants, encoding the same protein, have been identified. [provided by RefSeq, Jul 2008]

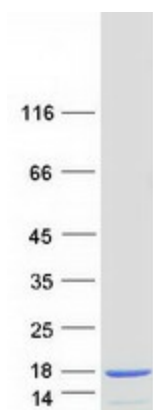
Product images:



Circular map for RC201616



Western blot validation of overexpression lysate (Cat# [LY418991]) using anti-DDK antibody (Cat# [TA50011-100]). Left: Cell lysates from untransfected HEK293T cells; Right: Cell lysates from HEK293T cells transfected with [RC203035] using transfection reagent MegaTran 2.0 (Cat# [TT210002]).



Coomassie blue staining of purified S100A4 protein (Cat# [TP301616]). The protein was produced from HEK293T cells transfected with S100A4 cDNA clone (Cat# RC201616) using MegaTran 2.0 (Cat# [TT210002]).