

Product datasheet for **RC201613**

RPL10 (NM_006013) Human Tagged ORF Clone

Product data:

Product Type: Expression Plasmids
Product Name: RPL10 (NM_006013) Human Tagged ORF Clone
Tag: Myc-DDK
Symbol: RPL10
Synonyms: AUTSX5; DXS648; DXS648E; L10; MRXS35; NOV; QM
Mammalian Cell Selection: Neomycin
Vector: pCMV6-Entry (PS100001)
E. coli Selection: Kanamycin (25 ug/mL)
ORF Nucleotide Sequence: >RC201613 ORF sequence
Red=Cloning site Blue=ORF Green=Tags(s)

TTTTGTAATACGACTCACTATAGGGCGGCCGGAATTCGTCGACTGGATCCGGTACCGAGGAGATCTGCC
GCC**CGATCGCC**

ATGGGCCGCCGCCGCCGTTGTTACCGGTATTGTAAGAACAAGCCGTACCCAAAGTCTCGTTCTGCC
GAGGTGTCCCTGATGCCAAGATTCGATTTTTGACCTGGGGCGGAAAAAGGCAAAAGTGGATGAGTTTCC
GCTTTGTGGCCACATGGTGTGATGAATATGAGCAGCTGTCCTCTGAAGCCCTGGAGGCTGCCGAATT
TGTGCAATAAGTACATGGTAAAAAGTTGTGGCAAAGATGGCTTCCATATCCGGGTGCGGCTCCACCCT
TCCACGTCATCCGCATCAACAAGATGTTGTCTGTGCTGGGGCTGACAGGCTCCAACAGGCATGCGAGG
TGCTTTGGAAAGCCCCAGGGCACTGTGGCCAGGGTTCACATTGGCCAAGTTATCATGTCCATCCGCACC
AAGCTGCAGAACAAGGAGCATGTGATTGAGGCCCTGCGCAGGGCCAAGTTCAAGTTTCTGGCCGCCAGA
AGATCCACATCTCAAAGAAGTGGGGCTTACCAAGTTCAATGCTGATGAATTTGAAGACATGGTGGCTGA
AAAGCGGCTCATCCCAGATGGCTGTGGGGTCAAGTACATCCCCAGTCGTGGCCCTCTGGACAAGTGGCGG
GCCCTGCACTCA

ACGCGTACGCGGGCGCTCGAGCAGAACTCATCTCAGAAGAGGATCTGGCAGCAATGATATCTGGATT
ACAAGGATGACGACGATAAGGTTTAA



[View online »](#)

Reconstitution Method:

1. Centrifuge at 5,000xg for 5min.
2. Carefully open the tube and add 100ul of sterile water to dissolve the DNA.
3. Close the tube and incubate for 10 minutes at room temperature.
4. Briefly vortex the tube and then do a quick spin (less than 5000xg) to concentrate the liquid at the bottom.
5. Store the suspended plasmid at -20°C. The DNA is stable for at least one year from date of shipping when stored at -20°C.

Note: Plasmids are not sterile. For experiments where strict sterility is required, filtration with 0.22um filter is required.

RefSeq: [NM_006013.5](#)

RefSeq Size: 2335 bp

RefSeq ORF: 645 bp

Locus ID: 6134

UniProt ID: [P27635](#)

Cytogenetics: Xq28

Domains: Ribosomal_L10e

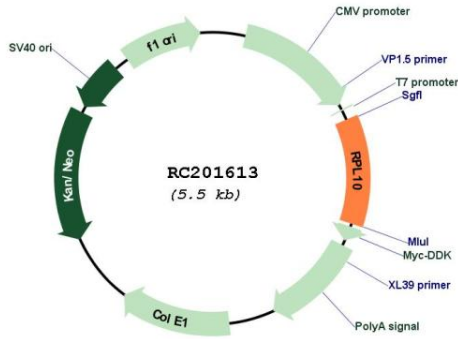
Protein Families: Druggable Genome

Protein Pathways: Ribosome

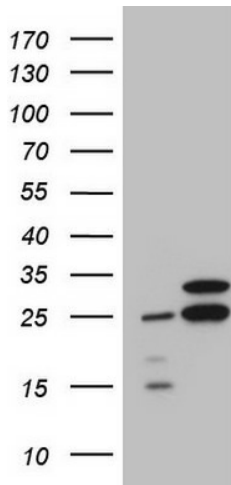
MW: 24.6 kDa

Gene Summary: This gene encodes a ribosomal protein that is a component of the 60S ribosome subunit. The related protein in chicken can bind to c-Jun and can repress c-Jun-mediated transcriptional activation. Some studies have detected an association between variation in this gene and autism spectrum disorders, though others do not detect this relationship. There are multiple pseudogenes of this gene dispersed throughout the genome. Alternative splicing results in multiple transcript variants. [provided by RefSeq, Jan 2015]

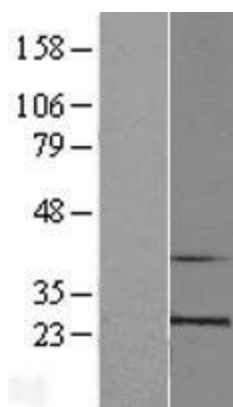
Product images:



Circular map for RC201613



HEK293T cells were transfected with the pCMV6-ENTRY control (Cat# [PS100001], Left lane) or pCMV6-ENTRY RPL10 (Cat# RC201613, Right lane) cDNA for 48 hrs and lysed. Equivalent amounts of cell lysates (5 ug per lane) were separated by SDS-PAGE and immunoblotted with anti-RPL10 (Cat# [TA807662])(1:2000). Positive lysates [LY416926] (100ug) and [LC416926] (20ug) can be purchased separately from OriGene.



Western blot validation of overexpression lysate (Cat# [LY416926]) using anti-DDK antibody (Cat# [TA50011-100]). Left: Cell lysates from untransfected HEK293T cells; Right: Cell lysates from HEK293T cells transfected with RC201613 using transfection reagent MegaTran 2.0 (Cat# [TT210002]).