

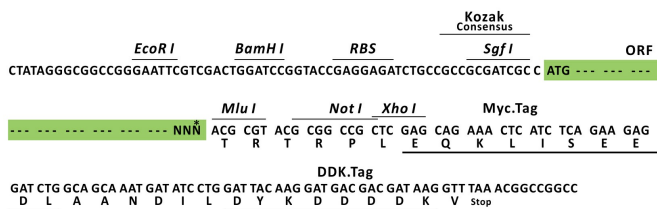
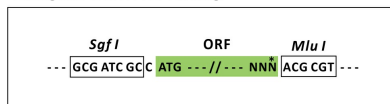
Product datasheet for RC201611L1

c-Myc (MYC) (NM_002467) Human Tagged ORF Clone

Product data:

Product Type:	Expression Plasmids
Product Name:	c-Myc (MYC) (NM_002467) Human Tagged ORF Clone
Tag:	Myc-DDK
Symbol:	MYC
Synonyms:	bHLHe39; c-Myc; MRTL; MYCC
Vector:	pLenti-C-Myc-DDK (PS100064)
E. coli Selection:	Chloramphenicol (34 ug/mL)
Cell Selection:	None
ORF Nucleotide Sequence:	The ORF insert of this clone is exactly the same as(RC201611).
Restriction Sites:	SgfI-MluI
Cloning Scheme:	

Cloning sites used for ORF Shuttling:



* The last codon before the Stop codon of the ORF.

ACCN:	NM_002467
ORF Size:	1362 bp



View online »

OTI Disclaimer:	The molecular sequence of this clone aligns with the gene accession number as a point of reference only. However, individual transcript sequences of the same gene can differ through naturally occurring variations (e.g. polymorphisms), each with its own valid existence. This clone is substantially in agreement with the reference, but a complete review of all prevailing variants is recommended prior to use. More info
OTI Annotation:	This clone was engineered to express the complete ORF with an expression tag. Expression varies depending on the nature of the gene.
RefSeq:	NM_002467.3 , NP_002458.2
RefSeq Size:	2379 bp
RefSeq ORF:	1365 bp
Locus ID:	4609
Cytogenetics:	8q24.21
Domains:	HLH, Myc_N_term, Myc-LZ
Protein Families:	Druggable Genome, Embryonic stem cells, Induced pluripotent stem cells, Stem cell - Pluripotency, Stem cell relevant signaling - JAK/STAT signaling pathway, Stem cell relevant signaling - TGFb/BMP signaling pathway, Stem cell relevant signaling - Wnt Signaling pathway, Transcription Factors
Protein Pathways:	Acute myeloid leukemia, Bladder cancer, Cell cycle, Chronic myeloid leukemia, Colorectal cancer, Endometrial cancer, ErbB signaling pathway, Jak-STAT signaling pathway, MAPK signaling pathway, Pathways in cancer, Small cell lung cancer, TGF-beta signaling pathway, Thyroid cancer, Wnt signaling pathway
MW:	50.5 kDa
Gene Summary:	This gene is a proto-oncogene and encodes a nuclear phosphoprotein that plays a role in cell cycle progression, apoptosis and cellular transformation. The encoded protein forms a heterodimer with the related transcription factor MAX. This complex binds to the E box DNA consensus sequence and regulates the transcription of specific target genes. Amplification of this gene is frequently observed in numerous human cancers. Translocations involving this gene are associated with Burkitt lymphoma and multiple myeloma in human patients. There is evidence to show that translation initiates both from an upstream, in-frame non-AUG (CUG) and a downstream AUG start site, resulting in the production of two isoforms with distinct N-termini. [provided by RefSeq, Aug 2017]