

Product datasheet for RC201605

Proteasome 20S beta 6 (PSMB6) (NM_002798) Human Tagged ORF Clone

Product data:

Product Type:	Expression Plasmids
Product Name:	Proteasome 20S beta 6 (PSMB6) (NM_002798) Human Tagged ORF Clone
Tag:	Myc-DDK
Symbol:	Proteasome 20S beta 6
Synonyms:	DELTA; LMPY; Y
Mammalian Cell Selection:	Neomycin
Vector:	pCMV6-Entry (PS100001)
E. coli Selection:	Kanamycin (25 ug/mL)
ORF Nucleotide Sequence:	>RC201605 ORF sequence Red=Cloning site Blue=ORF Green=Tags(s)

TTTTGTAATACGACTCACTATAGGGCGGCCGGAATTCGTCGACTGGATCCGGTACCGAGGAGATCTGCC
GCC**CGATCGCC**

ATGGCGGCTACCTTACTAGCTGCTCGGGGAGCCGGGCCAGCACCCGGCTTGGGGGCCGGAGGCGTTCCTC
CAGACTGGGAAAGCCGAGAAGTTTCCACTGGGACCACTATCATGGCCGTGCAGTTTGACGGGGCGTGGT
TCTGGGGCGGACTCCAGAACAACCACTGGGTCTACATCGCCAATCGAGTGACTGACAAGCTGACACCT
ATTCACGACCGCATTTTCTGCTGCTCGCTCAGGCTCAGCTGCTGATACCCAGGCAGTAGCTGATGCTGTCA
CCTACCAGCTCGTTTTCCACAGCATTGAACTGAATGAGCCTCCACTGGTCCACACAGCAGCCAGCCTCTT
TAAGGAGATGTGTACCGATACCGGAAGACCTGATGGCGGGAATCATCATCGCAGGCTGGGACCCCAA
GAAGGAGGGCAGGTGTAAGTACTAGTGCCTATGGGGGTATGATGGTAAGGCAGTCCTTTGCCATTGGAGGCT
CCGGGAGCTCCTACATCTATGGCTATGTTGATGCTACCTACCGGGAAGGCATGACCAAGGAAGAGTGTCT
GCAATTCAGTCCAATGCTCTCGCTTTGGCCATGGAGCGGGATGGCTCCAGTGGAGGAGTGATCCGCCTG
GCAGCCATTGCAGAGTCAGGGGTAGAGCGGCAAGTACTTTGGGAGACCAGATACCCAAATTCGCCGTTG
CCACTTTACCACCCGCC

ACGCGTACGCGGCCGCTCGAGCAGAACTCATCTCAGAAGAGGATCTGGCAGCAAATGATATCCTGGATT
ACAAGGATGACGACGATAAGGTTTAA



[View online »](#)

Reconstitution Method:

1. Centrifuge at 5,000xg for 5min.
2. Carefully open the tube and add 100ul of sterile water to dissolve the DNA.
3. Close the tube and incubate for 10 minutes at room temperature.
4. Briefly vortex the tube and then do a quick spin (less than 5000xg) to concentrate the liquid at the bottom.
5. Store the suspended plasmid at -20°C. The DNA is stable for at least one year from date of shipping when stored at -20°C.

RefSeq: [NM_002798.3](#)

RefSeq Size: 869 bp

RefSeq ORF: 720 bp

Locus ID: 5694

UniProt ID: [P28072](#)

Cytogenetics: 17p13.2

Domains: proteasome

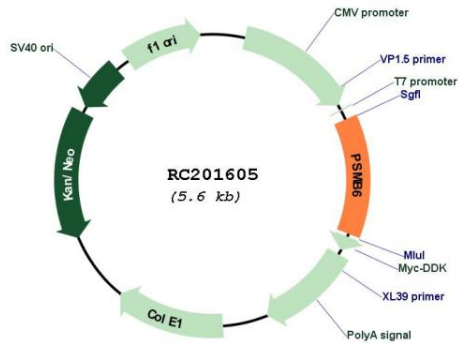
Protein Families: Druggable Genome, Protease

Protein Pathways: Proteasome

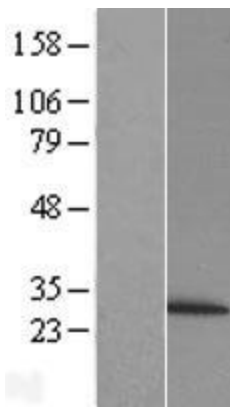
MW: 25.4 kDa

Gene Summary: The proteasome is a multicatalytic proteinase complex with a highly ordered ring-shaped 20S core structure. The core structure is composed of 4 rings of 28 non-identical subunits; 2 rings are composed of 7 alpha subunits and 2 rings are composed of 7 beta subunits. Proteasomes are distributed throughout eukaryotic cells at a high concentration and cleave peptides in an ATP/ubiquitin-dependent process in a non-lysosomal pathway. The encoded protein is a member of the proteasome B-type family, also known as the T1B family, and is a 20S core beta subunit in the proteasome. Alternatively spliced transcript variants encoding multiple isoforms have been observed for this gene. [provided by RefSeq, Jul 2012]

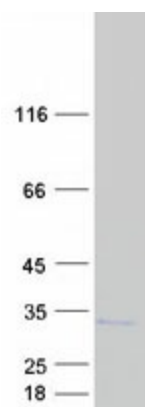
Product images:



Circular map for RC201605



Western blot validation of overexpression lysate (Cat# [LY419101]) using anti-DDK antibody (Cat# [TA50011-100]). Left: Cell lysates from untransfected HEK293T cells; Right: Cell lysates from HEK293T cells transfected with RC201605 using transfection reagent MegaTran 2.0 (Cat# [TT210002]).



Coomassie blue staining of purified PSMB6 protein (Cat# [TP301605]). The protein was produced from HEK293T cells transfected with PSMB6 cDNA clone (Cat# RC201605) using MegaTran 2.0 (Cat# [TT210002]).