

## Product datasheet for **RC201604**

### Lamin B1 (LMNB1) (NM\_005573) Human Tagged ORF Clone

#### Product data:

Product Type:	Expression Plasmids
Product Name:	Lamin B1 (LMNB1) (NM_005573) Human Tagged ORF Clone
Tag:	Myc-DDK
Symbol:	Lamin B1
Synonyms:	ADLD; LMN; LMN2; LMNB; MCPH26
Mammalian Cell Selection:	Neomycin
Vector:	pCMV6-Entry (PS100001)
E. coli Selection:	Kanamycin (25 ug/mL)



[View online »](#)

**ORF Nucleotide Sequence:**

>RC201604 ORF sequence  
 Red=Cloning site Blue=ORF Green=Tags(s)

TTTTGTAATACGACTCACTATAGGGCGGCCGGGAATTCGTCGACTGGATCCGGTACCGAGGAGATCTGCC  
 GCC**CGGATCGCC**

ATGGCGACTGCGACCCCCGTGCCCGCGGATGGCGACCCGCGTGGCGGCCACCACGCCGTGAGCC  
 CCACGCGCTGTCGCGGCTCCAGGAGAAGGAGGAGCTGCCGAGCTCAATGACCGGCTGGCGGTGTACAT  
 CGACAAGGTGCGCAGCCTGGAGACGGAACAGCGCGCTGCAGCTGCAGGTGACGGAGCGGAGGAGGTG  
 CGCGGCCGTGAGCTCACCGCCTCAAGCGCTCTACGAGACCGAGCTGGCCGACGCGCAGCGCGCTCG  
 ACGACACGGCCCGCAGCGCCCAAGCTGCAGATCGAGCTGGCAAGTGAAGGCGGAACACGACCAGCT  
 GCTCCTCAACTATGCTAAGAAGGAATCTGATCTTAATGGCGCCAGATCAAGCTTCGAGAATATGAAGCA  
 GCACTGAATTCGAAAGATGCAGCTCTTGCTACTGCACTTGGTGACAAAAAAGTTTAGAGGGAGATTTGG  
 AGGATCTGAAGGATCAGATTGCCAGTTGGAAGCCTCCTAGCTGCAGCCAAAAACAGTTAGCAGATGA  
 AACTTTACTTAAAGTAGATTTGGAGAATCGTTGTGAGGCCTTACTGAGGACTTGGAGTTTCGAAAAAGC  
 ATGTATGAAGAGGAGATTAACGAGACCAGAAGGAAGCATGAAACGCGCTTGGTAGAGGTGGATTCTGGGC  
 GTCAAATTGAGTATGAGTACAAGCTGGCGCAAGCCCTTCATGAGATGAGAGAGCAACATGATGCCAAAGT  
 GAGGCTGTATAAGGAGGAGCTGGAGCAGACTTACCATGCCAACTTGAGAATGCCAGACTGTCATCAGAG  
 ATGAATACTTCTACTGTCAACAGTGCCAGGGAAGAAGTATGAAAGCCGCATGAGAATTGAGAGCCTTT  
 CATCCCAGCTTTCTAATCTACAGAAAGAGTCTAGAGCATGTTTGGAAAGGATTCAAGAATTAGAGGACTT  
 GCTTGCTAAAGAAAAAGACAACCTCTCGTCGCATGCTGACAGACAAAGAGAGAGAGATGGCGGAAATAAGG  
 GATCAAATGCAGCAACAGCTGAATGACTATGAACAGCTTCTTGATGTAAGTTAGCCCTGGACATGGAAA  
 TCAGTCTTACAGGAACTTTACAAGGCGAAGAAGAGAGGTTGAAGCTGTCTCCAAGCCTTCTTCCC  
 GTGACAGTATCCCGAGCATCCTCAAGTCGTAGGTACGTACAACCTAGAGGAAAGCGGAAGAGGTTGAT  
 GTGGAAGAATCAGAGGCGAGTAGTAGTGTAGCATCTCTCATTCCGCCTCAGCCACTGGAATGTTTGCA  
 TCGAAGAAATTGATGTTGATGGGAAATTTATCCGCTTGAAGAACACTTCTGAACAGGATCAACCAATGGG  
 AGGCTGGGAGATGATCAGAAAAATTGGAGACACATCAGTCAGTTATAAATATACCTCAAGATATGTGCTG  
 AAGGCAGGCCAGACTGTTACAATTTGGGCTGCAAACGCTGGTGTACAGCCAGCCCCCAACTGACCTCA  
 TCTGGAAGAACCAGAACCTGTGGGCACTGGCGAAGATGTGAAGTTATATTGAAAAATTCTCAGGGAGA  
 GGAGTTGCTCAAAGAAGTACAGTCTTTAAAACAACCATACCTGAAGAAGAGGAGGAGGAAGAAGCA  
 GCTGGAGTGGTTGTTGAGGAAGAACTTTCCACCAGCAGGGAACCCCAAGAGCATCCAATAGAAGCTGTG  
 CAATTATG

**ACGCGT**ACGCGGCCGCTCGAGCAGAAACTCATCTCAGAAGAGGATCTGGCAGCAAATGATATCCTGGATT  
 ACAAGGATGACGACGATAAGGTTTAA

**Protein Sequence:**

>RC201604 protein sequence  
 Red=Cloning site Green=Tags(s)

MATATPVPPRMSRAGGPTTPLSPTRL SRLQEKEELRELNDR LAYVIDKVRSL ETENSALQLQVTEREEV  
 RGREL TGLKALYETELADARRALDDTARERAKLQIELGKCKAEHDQLLLNYAKKESDLNGAQIKLREYEA  
 ALNSKDAALATALGDKKSLEGLDLDKQIAQLEASLAAAKQLADETL LKVDLENRCQSLTEDLEFRKS  
 MYEEEEINETRRKHETRLVEVD SGRQIEEYKLAQALHEMREQHDAQVRLYKEELEQTYHAKLENARLSSE  
 MNTSTVNSAREELMESRMRIESLSSQLSNLQKESRACLERIQELEDLLAKEKDNSRRMLTDKEREMAEIR  
 DQMQQQLNDYEQLLDVKLALDMEISAYRKLLQGEERLKLSPSPSSRVTVSRASSRSVRTTRGKRKRVD  
 VESEASSSVSISHSASATGNVICIEIDVDGKFI RLKNTSEQDQPMGGWEMIRKIGDTSVSYKYTSRYVL  
 KAGQVTIWAANAGVTASPP TDLIWKNNQNSWGTGEDVKVILKNSQGEVAQRSTVFKTTIPEEEEEEEE  
 AGVVVEEELFHQQGTPRASNRSCAIM

**TR**TRPLEQKLISEEDLAANDILDYKDDDDKV

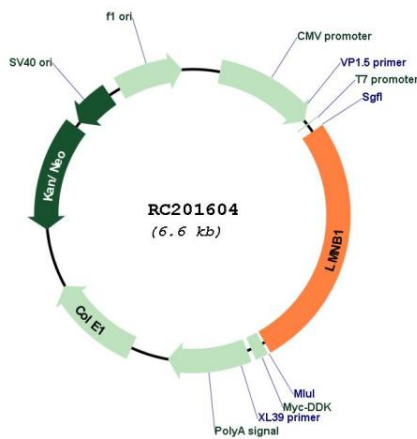
**Chromatograms:**

[https://cdn.origene.com/chromatograms/mk6770\\_d07.zip](https://cdn.origene.com/chromatograms/mk6770_d07.zip)

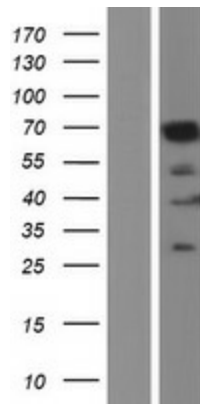


**Locus ID:** 4001  
**UniProt ID:** [P20700](#)  
**Cytogenetics:** 5q23.2  
**Domains:** IF\_tail, filament  
**MW:** 66.4 kDa  
**Gene Summary:** This gene encodes one of the two B-type lamin proteins and is a component of the nuclear lamina. A duplication of this gene is associated with autosomal dominant adult-onset leukodystrophy (ADLD). Alternative splicing results in multiple transcript variants. [provided by RefSeq, Dec 2015]

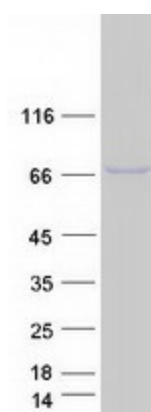
**Product images:**



Circular map for RC201604



Western blot validation of overexpression lysate (Cat# [LY417217]) using anti-DDK antibody (Cat# [TA50011-100]). Left: Cell lysates from untransfected HEK293T cells; Right: Cell lysates from HEK293T cells transfected with RC201604 using transfection reagent MegaTran 2.0 (Cat# [TT210002]).



Coomassie blue staining of purified LMNB1 protein (Cat# [TP301604]). The protein was produced from HEK293T cells transfected with LMNB1 cDNA clone (Cat# RC201604) using MegaTran 2.0 (Cat# [TT210002]).