

Product datasheet for RC201600

SSX1 (NM_005635) Human Tagged ORF Clone

Product data:

Product Type: Expression Plasmids
Product Name: SSX1 (NM_005635) Human Tagged ORF Clone
Tag: Myc-DDK
Symbol: SSX1
Synonyms: CT5.1; SSRC
Mammalian Cell Selection: Neomycin
Vector: pCMV6-Entry (PS100001)
E. coli Selection: Kanamycin (25 ug/mL)
ORF Nucleotide Sequence: >RC201600 ORF sequence
 Red=Cloning site Blue=ORF Green=Tags(s)

TTTTGTAATACGACTCACTATAGGGCGGCCGGAATTCGTCGACTGGATCCGGTACCGAGGAGATCTGCC
 GCC**CGATCGCC**

ATGAACGGAGACGACACCTTTGCAAAGAGACCCAGGGATGATGCTAAAGCATCAGAGAAGAGAAGCAAGG
 CCTTTGATGATATTGCCACATACTTCTCTAAGAAAGAGTGGAAAAAGATGAAATACTCGGAGAAAATCAG
 CTATGTGTATATGAAGAGAACTATAAGGCCATGACTAACTAGGTTTCAAAGTCACCCTCCACCTTTT
 ATGTGTAATAAACAGGCCACAGACTTCCAGGGGAATGATTTTGATAATGACCATAACCGCAGGATTCAGG
 TTGAACATCCTCAGATGACTTTTCGGCAGGCTCCACAGAATCATCCGAAGATCATGCCAAGAAGCCAGC
 AGAGGACGAAAAATGATTGGAAGGAGTGTGAGAAGCATCTGGCCACAAAACGATGGGAAACAATGCAC
 CCCCCAGGAAAAGCAAATATTTCTGAGAAGATTAATAAGAGATCTGGACCCAAAAGGGGGAAACATGCCT
 GGACCCACAGACTGCGTGAGAGAAAAGCAGCTGGTGATTTATGAAGAGATCAGCGACCCTGAGGAAGATGA
 CGAG

ACGCGTACGCGGCCGCTCGAGCAGAACTCATCTCAGAAGAGGATCTGGCAGCAAATGATATCCTGGATT
 ACAAGGATGACGACGATAAGGTTTAA

Protein Sequence: >RC201600 protein sequence
 Red=Cloning site Green=Tags(s)

MNGDDTFAKRPRDDAKASEKRSKAFDDIATYFSKKEWKKMKYSEKISYVYMKRNYKAMTKLGFKVTLPF
 MCNKQATDFQGNDFDNDHNRRIQVEHPQMTFGRHLHRIIPKIMPKKPAEDENDSKGVSEASGPQNDGKQLH
 PPGKANISEKINKRSGPKRKGHAWTHRLRERKQLVIYEEISDPEEDDE

TRTRPLEQKLISEEDLAANDILDYKDDDDKV



Chromatograms: https://cdn.origene.com/chromatograms/mk6299_f04.zip

Restriction Sites: SgfI-MluI

Cloning Scheme:



ACCN: NM_005635

ORF Size: 564 bp

OTI Disclaimer: The molecular sequence of this clone aligns with the gene accession number as a point of reference only. However, individual transcript sequences of the same gene can differ through naturally occurring variations (e.g. polymorphisms), each with its own valid existence. This clone is substantially in agreement with the reference, but a complete review of all prevailing variants is recommended prior to use. [More info](#)

OTI Annotation: This clone was engineered to express the complete ORF with an expression tag. Expression varies depending on the nature of the gene.

Components: The ORF clone is ion-exchange column purified and shipped in a 2D barcoded Matrix tube containing 10ug of transfection-ready, dried plasmid DNA (reconstitute with 100 ul of water).

Reconstitution Method:

1. Centrifuge at 5,000xg for 5min.
2. Carefully open the tube and add 100ul of sterile water to dissolve the DNA.
3. Close the tube and incubate for 10 minutes at room temperature.
4. Briefly vortex the tube and then do a quick spin (less than 5000xg) to concentrate the liquid at the bottom.
5. Store the suspended plasmid at -20°C. The DNA is stable for at least one year from date of shipping when stored at -20°C.

RefSeq: [NM_005635.4](#)

RefSeq Size: 1316 bp

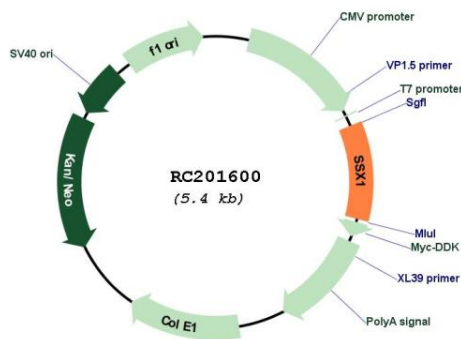
RefSeq ORF: 567 bp

Locus ID: 6756

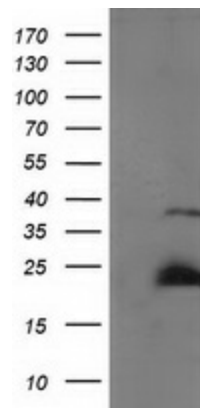
UniProt ID: [Q16384](#)
Cytogenetics: Xp11.23
Protein Families: Transcription Factors
MW: 21.9 kDa

Gene Summary: The product of this gene belongs to the family of highly homologous synovial sarcoma X (SSX) breakpoint proteins. These proteins may function as transcriptional repressors. They are also capable of eliciting spontaneous humoral and cellular immune responses in cancer patients, and are potentially useful targets in cancer vaccine-based immunotherapy. This gene, and also the SSX2 and SSX4 family members, have been involved in t(X;18)(p11.2;q11.2) translocations that are characteristically found in all synovial sarcomas. This translocation results in the fusion of the synovial sarcoma translocation gene on chromosome 18 to one of the SSX genes on chromosome X. The encoded hybrid proteins are likely responsible for transforming activity. Alternative splicing of this gene results in multiple transcript variants. A related pseudogene has been identified on chromosome X. [provided by RefSeq, Jul 2013]

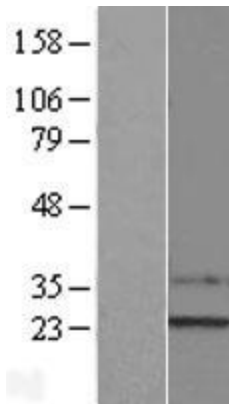
Product images:



Circular map for RC201600



HEK293T cells were transfected with the pCMV6-ENTRY control (Cat# [PS100001], Left lane) or pCMV6-ENTRY SSX1 (Cat# RC201600, Right lane) cDNA for 48 hrs and lysed. Equivalent amounts of cell lysates (5 ug per lane) were separated by SDS-PAGE and immunoblotted with anti-SSX1 (Cat# [TA502730]). Positive lysates [LY417166] (100ug) and [LC417166] (20ug) can be purchased separately from OriGene.



Western blot validation of overexpression lysate (Cat# [LY417166]) using anti-DDK antibody (Cat# [TA50011-100]). Left: Cell lysates from untransfected HEK293T cells; Right: Cell lysates from HEK293T cells transfected with RC201600 using transfection reagent MegaTran 2.0 (Cat# [TT210002]).



Coomassie blue staining of purified SSX1 protein (Cat# [TP301600]). The protein was produced from HEK293T cells transfected with SSX1 cDNA clone (Cat# RC201600) using MegaTran 2.0 (Cat# [TT210002]).