

Product datasheet for RC201591

CIB1 (NM_006384) Human Tagged ORF Clone

Product data:

Product Type: Expression Plasmids
Product Name: CIB1 (NM_006384) Human Tagged ORF Clone
Tag: Myc-DDK
Symbol: CIB1
Synonyms: CIB; CIBP; KIP1; PRKDCIP; SIP2-28
Mammalian Cell Selection: Neomycin
Vector: pCMV6-Entry (PS100001)
E. coli Selection: Kanamycin (25 ug/mL)
ORF Nucleotide Sequence: >RC201591 ORF sequence
 Red=Cloning site Blue=ORF Green=Tags(s)

TTTTGTAATACGACTCACTATAGGGCGCCGGGAATTCGTCGACTGGATCCGGTACCGAGGAGATCTGCC
GCC**CGATCGCC**

ATGGGGGGCTCGGGCAGTCGCCTGTCCAAGGAGCTGCTGGCCGAGTACCAGGACTTGACGTTCTGACGA
AGCAGGAGATCCTCCTAGCCACAGGCGGTTTTGTGAGCTGCTTCCCAGGAGCAGCGGAGCGTGGAGTC
GTCACTTCGGGCACAAGTGCCCTTCGAGCAGATTCTCAGCCTCCAGAGCTCAAGCCAACCCCTCAAG
GAGCGAATCTGCAGGCTTCTCCACATCCCAGCAAAGACAGCCTTAGCTTTGAGGACTTCTGGATC
TCCTCAGTGTGTTTCAGTGACACAGCCACGCCAGACATCAAGTCCCATTATGCCTTCCGCATCTTTGACTT
TGATGATGACGGAACCTTGAACAGAGAAGACCTGAGCCGGCTGGTGAACCTGCCTCACGGGAGAGGGCGAG
GACACACGGCTTAGTGCCTGAGATGAAGCAGCTCATCGACAACATCCTGGAGGAGTCTGACATTGACA
GGGATGGAACCATCAACCTCTCTGAGTTCAGCAGCTCATCTCCCGTTCTCCAGACTTTGCCAGCTCCTT
TAAGATTGTCCTG

ACGCGTACGCGGCCGCTCGAGCAGAACTCATCTCAGAAGAGGATCTGGCAGCAATGATATCCTGGATT
ACAAGGATGACGACGATAAGGTTTAA

Protein Sequence: >RC201591 protein sequence
 Red=Cloning site Green=Tags(s)

MGGSGSRLSKELLAEQDLTFLTKQEILLAHRRFCCELLPQEQRSVESLRAQVPFEQILSLPELKANPFK
ERICRVFSTSPAKDSLSEDFLDLLSVFSDTATPDIKSHYAFRIFDFDDDGTLNREDLSRLVNCLTGEGE
DTRLSASEMKQLIDNILEESDIDRDGTINLSEFQHVISRSPDFASSFKIVL

TRTRPLEQKLISEEDLAANDILDYKDDDDKV



[View online »](#)

Chromatograms: https://cdn.origene.com/chromatograms/mk6073_a08.zip

Restriction Sites: SgfI-MluI

Cloning Scheme:



ACCN: NM_006384

ORF Size: 573 bp

OTI Disclaimer: The molecular sequence of this clone aligns with the gene accession number as a point of reference only. However, individual transcript sequences of the same gene can differ through naturally occurring variations (e.g. polymorphisms), each with its own valid existence. This clone is substantially in agreement with the reference, but a complete review of all prevailing variants is recommended prior to use. [More info](#)

OTI Annotation: This clone was engineered to express the complete ORF with an expression tag. Expression varies depending on the nature of the gene.

Components: The ORF clone is ion-exchange column purified and shipped in a 2D barcoded Matrix tube containing 10ug of transfection-ready, dried plasmid DNA (reconstitute with 100 ul of water).

Reconstitution Method:

1. Centrifuge at 5,000xg for 5min.
2. Carefully open the tube and add 100ul of sterile water to dissolve the DNA.
3. Close the tube and incubate for 10 minutes at room temperature.
4. Briefly vortex the tube and then do a quick spin (less than 5000xg) to concentrate the liquid at the bottom.
5. Store the suspended plasmid at -20°C. The DNA is stable for at least one year from date of shipping when stored at -20°C.

Note: Plasmids are not sterile. For experiments where strict sterility is required, filtration with 0.22um filter is required.

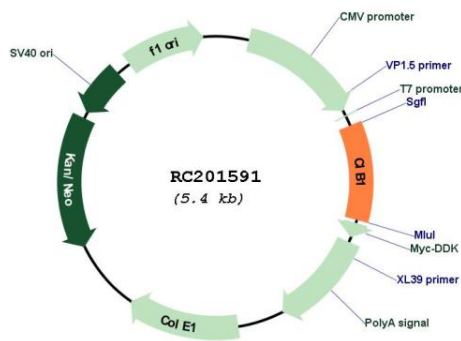
RefSeq: [NM_006384.4](#)

RefSeq Size: 995 bp

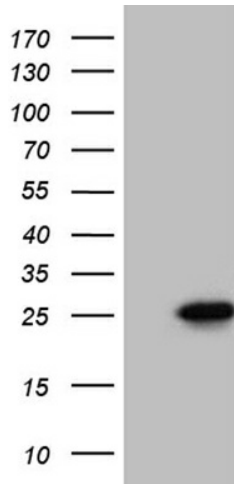
RefSeq ORF: 576 bp
Locus ID: 10519
UniProt ID: [Q99828](#)
Cytogenetics: 15q26.1
Domains: EFh
MW: 21.7 kDa

Gene Summary: This gene encodes a member of the EF-hand domain-containing calcium-binding superfamily. The encoded protein interacts with many other proteins, including the platelet integrin alpha-IIb-beta-3, DNA-dependent protein kinase, presenilin-2, focal adhesion kinase, p21 activated kinase, and protein kinase D. The encoded protein may be involved in cell survival and proliferation, and is associated with several disease states including cancer and Alzheimer's disease. Alternative splicing results in multiple transcript variants. [provided by RefSeq, Apr 2013]

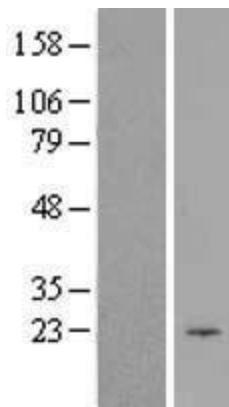
Product images:



Circular map for RC201591



HEK293T cells were transfected with the pCMV6-ENTRY control (Cat# [PS100001], Left lane) or pCMV6-ENTRY CIB1 (Cat# RC201591, Right lane) cDNA for 48 hrs and lysed. Equivalent amounts of cell lysates (5 ug per lane) were separated by SDS-PAGE and immunoblotted with anti-CIB1 (1:2000) (Cat# [TA811147]). Positive lysates [LY401918] (100ug) and [LC401918] (20ug) can be purchased separately from OriGene.



Western blot validation of overexpression lysate (Cat# [LY401918]) using anti-DDK antibody (Cat# [TA50011-100]). Left: Cell lysates from untransfected HEK293T cells; Right: Cell lysates from HEK293T cells transfected with RC201591 using transfection reagent MegaTran 2.0 (Cat# [TT210002]).



Coomassie blue staining of purified CIB1 protein (Cat# [TP301591]). The protein was produced from HEK293T cells transfected with CIB1 cDNA clone (Cat# RC201591) using MegaTran 2.0 (Cat# [TT210002]).