

Product datasheet for RC201590

NFIB (NM_005596) Human Tagged ORF Clone

Product data:

Product Type:	Expression Plasmids
Product Name:	NFIB (NM_005596) Human Tagged ORF Clone
Tag:	Myc-DDK
Symbol:	NFIB
Synonyms:	CTF; HMGIC/NFIB; MACID; NF-I/B; NF1-B; NFI-B; NFI-RED; NFIB2; NFIB3
Mammalian Cell Selection:	Neomycin
Vector:	pCMV6-Entry (PS100001)
E. coli Selection:	Kanamycin (25 ug/mL)
ORF Nucleotide Sequence:	>RC201590 ORF sequence Red=Cloning site Blue=ORF Green=Tags(s)

TTTTGTAATACGACTCACTATAGGGCGGCCGGAATTCGTCGACTGGATCCGGTACCGAGGAGATCTGCC
GCC**CGATCGCC**

ATGATGTATTCTCCCATCTGTCTCACTCAGGATGAATTCACCCATTCATCGAGGCACTTCTCCACATG
TCCGTGCAATTGCCTATACTTGGTTCAACCTGCAGGCTCGAAAACGCAAGTACTTTAAAAAGCATGAGAA
GCGAATGTCAAAGGATGAAGAAAGAGCAGTCAAAGATGAGCTTCTCAGTAAAAGCCTGAAATCAAACAG
AAGTGGGCATCCAGGCTCCTTGCCAAATGCGCAAAGATATTCGCCAGGAGTATCGAGAGGACTTTGTGC
TCACCGTACTGGCAAGAAGCACCGTGTGTCTTATCCAATCCCGACCAGAAGGGTAAGATTAGGAG
AATCGACTGCCTGCGACAGGCAGACAAAGTCTGGCGTCTGGATCTAGTCATGGTATCCTGTTCAAAGGC
ATCCCCCTTGAAAAGTACCGATGGAGAGCGGCTCATGAAATCCCCACATTGCACAAACCCAGCACTTTGTG
TCCAGCCACATCATATCACAGTATCAGTTAAGGAGCTTGATTTGTTTTGGCATACTACGTGCAGGAGCA
AGATTCTGGACAATCAGGAAGTCCAAGCCACAATGATCCTGCCAAGAATCCTCCAGGTTACCTTGAGGAT
AGTTTTGTAAAATCTGGAGTCTTCAATGTATCAGAAGTGAAGAGTATCCAGAACGCCATAACCCAGG
GAACTGGAGTCAACTTCCAATTGGAGAAATCCAAGCCAACCACTACTATCATGACATGAACTCGGGGT
CAATCTTCAGAGTCTCTGTCTTCTCCACCAAGCAGCAAAAGACCCAAAACATAATCCATAGATGAAAT
ATGGAACCAAGTCTACAGGAGACTTTTACCCCTCTCCAAGTTCACCAGTCTGGAAGTGAACATGCG
ACGAAAGAGATCAAGATATGTCTTCTCCGACTACTATGAAGAAGCCTGAAAAGCCATTGTTCAAGCTCTGC
ATCTCCACAGGATTCTTCCCAAGACTGAGCACTTTCCCCAGCACCACCATCCCGAATACCTGGAGTT
GCACACAGTGTACTCTCAACTCGAACTCCACCTCCACCTTACCAGTTGCCATTTCCAACACAAGCTATCC
TTCCTCCAGCCCATCGAGCTACTTTTCTCATCCAACAATCAGATATCCTCCCACTGAATCCTCAGGA
TACTCTGAAGAACTATGTACTTCTTATGACCCATCCAGTCCACAACCAGCCAGTCTGGTACCTGGGC

ACGGTACGGCGCGCTCGAGCAGAACTCATCTCAGAAGAGGATCTGGCAGCAATGATATCCTGGATT
ACAAGGATGACGACGATAAGGTTTAA



[View online >](#)

Protein Sequence: >RC201590 protein sequence
 Red=Cloning site Green=Tags(s)

MMYSPICLTQDEFHPFIEALLPHVRAIAYTWFNLQARKRKYFKKHEKRM SKDEERAVKDELLSEKPEIKQ
 KWASRL LAKLRKDIRQEYREDFVLTVTGKKHPCCVLSNPDQKGI RRIDCLRQADKVRWLDLVMVILFKG
 IPLESTDGERLMKSPHCN PALCVQPHHITVSVKELDLFLAYYYQE QDSGQSGSPSHNDPAKNPPGYLED
 SFVKSGVFNVSELVRVSRTPITQGTGVNFPIGEIPSQPYHDMNSGVNLQRSLSSPPSSKRPKTISIDEN
 MEPSPTGDFYPSPPSPAAGSRTWHERDQDMSSPTTMKKPEKPLFSSASPDSSPRLSTFPQHHPGIPGV
 AHSVISTRTPPPSPLPFPTQAILPPAPSSYFSHTPIRYPPHLNPQDTLKNYVPSYDPSSPQTSQSWYLG

TRTRPLEQKLISEEDLAANDILDYKDDDDKV

Chromatograms: https://cdn.origene.com/chromatograms/mk6232_d11.zip

Restriction Sites: SgfI-MluI

Cloning Scheme:

Cloning sites used for ORF Shuttling:



* The last codon before the Stop codon of the ORF

ACCN: NM_005596

ORF Size: 1260 bp

OTI Disclaimer: The molecular sequence of this clone aligns with the gene accession number as a point of reference only. However, individual transcript sequences of the same gene can differ through naturally occurring variations (e.g. polymorphisms), each with its own valid existence. This clone is substantially in agreement with the reference, but a complete review of all prevailing variants is recommended prior to use. [More info](#)

OTI Annotation: This clone was engineered to express the complete ORF with an expression tag. Expression varies depending on the nature of the gene.

Components: The ORF clone is ion-exchange column purified and shipped in a 2D barcoded Matrix tube containing 10ug of transfection-ready, dried plasmid DNA (reconstitute with 100 ul of water).

Reconstitution Method:

1. Centrifuge at 5,000xg for 5min.
2. Carefully open the tube and add 100ul of sterile water to dissolve the DNA.
3. Close the tube and incubate for 10 minutes at room temperature.
4. Briefly vortex the tube and then do a quick spin (less than 5000xg) to concentrate the liquid at the bottom.
5. Store the suspended plasmid at -20°C. The DNA is stable for at least one year from date of shipping when stored at -20°C.

RefSeq: [NM_005596.3](#)

RefSeq Size: 8285 bp

RefSeq ORF: 1263 bp

Locus ID: 4781

UniProt ID: [O00712](#)

Cytogenetics: 9p23-p22.3

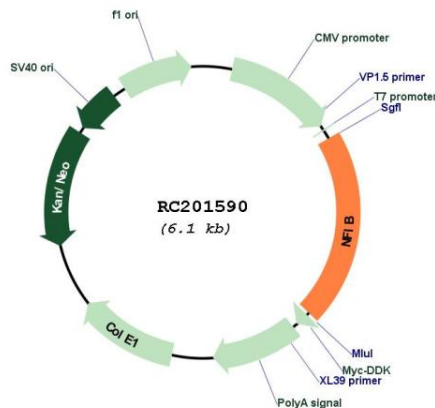
Domains: CTF_NFI, DWA

Protein Families: Druggable Genome, Transcription Factors

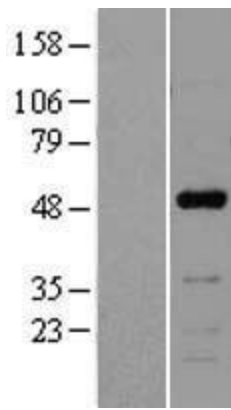
MW: 47.4 kDa

Gene Summary: Recognizes and binds the palindromic sequence 5'-TTGGCNNNNNGCCAA-3' present in viral and cellular promoters and in the origin of replication of adenovirus type 2. These proteins are individually capable of activating transcription and replication.[UniProtKB/Swiss-Prot Function]

Product images:



Circular map for RC201590



Western blot validation of overexpression lysate (Cat# [LY417203]) using anti-DDK antibody (Cat# [TA50011-100]). Left: Cell lysates from untransfected HEK293T cells; Right: Cell lysates from HEK293T cells transfected with RC201590 using transfection reagent MegaTran 2.0 (Cat# [TT210002]).



Coomassie blue staining of purified NFIB protein (Cat# [TP301590]). The protein was produced from HEK293T cells transfected with NFIB cDNA clone (Cat# RC201590) using MegaTran 2.0 (Cat# [TT210002]).