

## Product datasheet for RC201581

### CFDP1 (NM\_006324) Human Tagged ORF Clone

#### Product data:

|                           |   |
|---------------------------|---|
| Product Type:             | Expression Plasmids   |
| Product Name:             | CFDP1 (NM_006324) Human Tagged ORF Clone                          |
| Tag:                      | Myc-DDK   |
| Symbol:                   | CFDP1   |
| Synonyms:                 | BCNT; BUCENTAUR; CENP-29; CP27; p97; SWC5; Yeti                   |
| Mammalian Cell Selection: | Neomycin  |
| Vector:                   | pCMV6-Entry (PS100001)  |
| E. coli Selection:        | Kanamycin (25 ug/mL)  |
| ORF Nucleotide Sequence:  | >RC201581 ORF sequence<br>Red=Cloning site Blue=ORF Green=Tags(s) |

TTTTGTAATACGACTCACTATAGGGCGGCCGGAATTCGTCGACTGGATCCGGTACCGAGGAGATCTGCC  
GCC**CGATCGCC**

ATGGAGGAATTCGACTCCGAAGACTTCTCTACGTCGGAGGAGGACGAGGACTACGTGCCGTCGGGTGGAG  
AGTATAGTGAAGATGATGTAATGAATTAGTGAAGGAAGATGAAGTGGATGGTGAAGAGCAGACACAGAA  
AACCCAAAGGGAAAAAGAAAGGCCAGAGCATTCCAGCCAGGAAGAGAAGACAAGGTGGCCTCTCATT  
GAAGAAGAGGAAGAGGAGGATGCCAATTCAGAATCTGAGGGAAGCAGTAGTGAGGAGGAAGATGACGCTG  
CAGAGCAGGAAAAAGGCATTGGATCAGAGGATGCCAGAAAAAGAGGAGGACGAACTCTGGCCAGCTT  
CCTCAATGATGTGGACCAAAATCAAAAGTGCCCAAGTACACAAGTTAAGAAAAGGAGAGGAGACTGAA  
GAGACAAGTTCAAGTAAATTGTTGGTAAAAGCAGAAGAGCTAGAGAAACCTAAAGAAACAGAAAAAGTTA  
AAATCACCAAGGTGTTTGTGTTGCTGGTGAAGAAGTAAGGGTAACTAAGGAAGTGGATGCTACATCTAA  
AGAGGCCAAATCCTTCTCAAGCAGAAATGAGAAAGAAAAACCACAGGCTAATGTTCTTCAGCTCTGCCA  
TCACTCCCTGCCGGTCCAGGGTAAAAAGATCAAGTGGCATGAGCAGCCTTTTGGGAAAAATTGGTGCCA  
AGAAGCAGAAAAAGACCCCTTGAGAAGTCAAAGTGGACTGGGAGAGCTTCAAGGAGGAAGAGGGGAT  
TGGTGAAGAACTGGCCATCCATAATCGAGGGAAGAGGGGTACATTGAACGGAAGCCTTCTCGACCGA  
GTGGATCACAGGCAGTTTGAAATTGAGCGAGATCTCAGGCTGAGCAAAATGAAACCT

**ACGCGT**ACGCGGCCGCTCGAGCAGAAACTCATCTCAGAAGAGGATCTGGCAGCAAATGATATCCTGGATT  
ACAAGGATGACGACGATAAGGTTTAA



[View online »](#)

**Protein Sequence:** >RC201581 protein sequence  
Red=Cloning site Green=Tags(s)

MEEFDSEDFSTSEEDDYVPSGGEYSEDDVNELVKEDEVGEEQTQKTQGGKKAQSIPARKRRQGGLSL  
 EEEEEEDANSESEGSSSEEDDAAEQEKIGISEDARKKKEDELWASFLNDVGPVSKVPPSTQVKKGEETE  
 ETSSSKLLVKAEELEKPKETEKVKITKVFDFAGEEVRVTKEVDATSKAKSFFKQNEKEKPQANVPSALP  
 SLPAGSGLKRSSGMSLLGKIGAKKQKMTLEKSKLDWESFKEEEGIGEELAIHNRGKEGYIERKAFLDR  
 VDRHQFEIERDLRLSKMKP

TRTRPLEQKLISEEDLAANDILDYKDDDDKV

**Chromatograms:** [https://cdn.origene.com/chromatograms/mk6299\\_h06.zip](https://cdn.origene.com/chromatograms/mk6299_h06.zip)

**Restriction Sites:** SgfI-MluI

**Cloning Scheme:**



**ACCN:** NM\_006324

**ORF Size:** 897 bp

**OTI Disclaimer:** The molecular sequence of this clone aligns with the gene accession number as a point of reference only. However, individual transcript sequences of the same gene can differ through naturally occurring variations (e.g. polymorphisms), each with its own valid existence. This clone is substantially in agreement with the reference, but a complete review of all prevailing variants is recommended prior to use. [More info](#)

**OTI Annotation:** This clone was engineered to express the complete ORF with an expression tag. Expression varies depending on the nature of the gene.

**Components:** The ORF clone is ion-exchange column purified and shipped in a 2D barcoded Matrix tube containing 10ug of transfection-ready, dried plasmid DNA (reconstitute with 100 ul of water).

**Reconstitution Method:**

1. Centrifuge at 5,000xg for 5min.
2. Carefully open the tube and add 100ul of sterile water to dissolve the DNA.
3. Close the tube and incubate for 10 minutes at room temperature.
4. Briefly vortex the tube and then do a quick spin (less than 5000xg) to concentrate the liquid at the bottom.
5. Store the suspended plasmid at -20°C. The DNA is stable for at least one year from date of shipping when stored at -20°C.

**RefSeq:** [NM\\_006324.1](#)

**RefSeq Size:** 1281 bp

**RefSeq ORF:** 900 bp

**Locus ID:** 10428

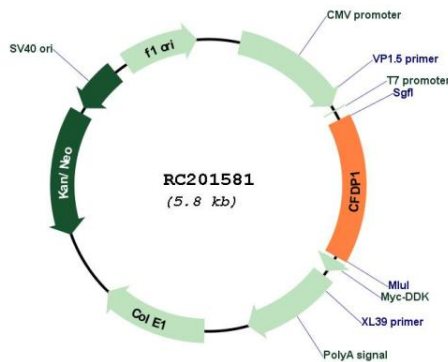
**UniProt ID:** [Q9UEE9](#)

**Cytogenetics:** 16q23.1

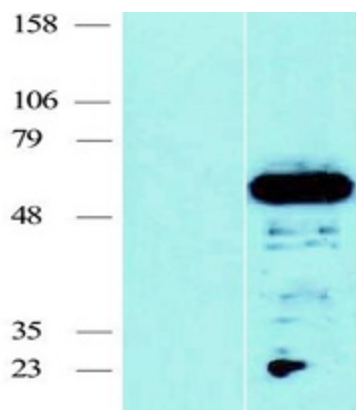
**MW:** 33.6 kDa

**Gene Summary:** May play a role during embryogenesis.[UniProtKB/Swiss-Prot Function]

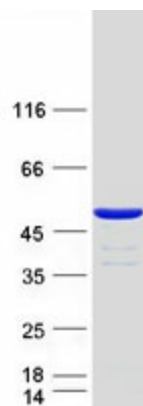
**Product images:**



Circular map for RC201581



Western blot validation of overexpression lysate (Cat# [LY416717]) using anti-DDK antibody (Cat# [TA50011-100]). Left: Cell lysates from untransfected HEK293T cells; Right: Cell lysates from HEK293T cells transfected with RC201581 using transfection reagent MegaTran 2.0 (Cat# [TT210002]).



Coomassie blue staining of purified CFDP1 protein (Cat# [TP301581]). The protein was produced from HEK293T cells transfected with CFDP1 cDNA clone (Cat# RC201581) using MegaTran 2.0 (Cat# [TT210002]).