

## Product datasheet for **RC201579**

### **IRF6 (NM\_006147) Human Tagged ORF Clone**

#### **Product data:**

Product Type:	Expression Plasmids
Product Name:	IRF6 (NM_006147) Human Tagged ORF Clone
Tag:	Myc-DDK
Symbol:	IRF6
Synonyms:	LPS; OFC6; PIT; PPS; PPS1; VWS; VWS1
Mammalian Cell Selection:	Neomycin
Vector:	pCMV6-Entry (PS100001)
E. coli Selection:	Kanamycin (25 ug/mL)



[View online »](#)

**ORF Nucleotide Sequence:**

>RC201579 ORF sequence  
 Red=Cloning site Blue=ORF Green=Tags(s)

TTTTGTAATACGACTCACTATAGGGCGGCCGGAATTCGTCGACTGGATCCGGTACCGAGGAGATCTGCC  
 GCC**CGGATCGCC**

ATGGCCCTCCACCCCGCAGAGTCCGGCTAAAGCCCTGGTGGTGGCCAGGTGGATAGTGGCCTCTACC  
 CTGGGCTCATCTGGCTACACAGGACTCTAAACGCTTCCAGATTCCTGGAAACATGCCACCCGGCATAG  
 CCCTCAACAAGAAGAGGAAAATACCATTTTTAAGGCCTGGGCTGTAGAGACAGGGAAGTACCAGGAAGGG  
 GTGGATGACCCTGACCCAGCTAAATGGAAGGCCAGCTGCGCTGTGCTCTCAATAAGAGCAGAGAATTCA  
 ACCTGATGTATGATGGCACCAAGGAGGTGCCATGAACCCAGTGAAGATATCAAGTGTGTGACATCCC  
 TCAGCCCCAGGGCTCGATCATTAAACCCAGGATCCACAGGGTCTGCTCCCTGGGATGAGAAGGATAATGAT  
 GTGGATGAAGAAGATGAGGAAGATGAGCTGGATCAGTCGCAGCACCATGTTCCCATCCAGGACACCTTCC  
 CCTTCTGAACATCAATGGTTCTCCCATGGCGCCAGCCAGTGTGGCAATTGCAGTGTGGCAACTGCAG  
 CCCGGAGGCAGTGTGGCCAAAACCTGAACCCCTGGAGATGGAAGTACCCAGGCACCTATACAGCCCTTC  
 TATAGCTCTCCAGAACTGTGGATCAGCTCTCTCCAATGACTGACCTGGACATCAAGTTTTCAGTACCGTG  
 GGAAGGAGTACGGGCAGACCATGACCGTGAACCCCTCAGGGCTGCCGACTCTTCTATGGGGACCTGGG  
 TCCCATGCCTGACCAGGAGGAGCTTTTGGTCCCGTCAGCCTGGAGCAGGTCAAATTCACAGTCTGAG  
 CATATTACCAATGAGAAGCAGAAGCTGTTCACTAGCAAGCTGCTGGACGTCATGGACAGAGGACTGATCC  
 TGGAGGTGAGCGGTGATGCCATTTATGCCATCAGGCTGTGCCAGTGAAGGTGACTGGTCTGGGCCATG  
 TGCCCCATCACTTGTGTCCCAACCTGATTGAGAGACAAAAGAAGGTCAAGCTATTTGTCTGGAACA  
 TTCCTTAGCGATCTATTGCCACCAGAAAGGACAGATAGAGAAGCAGCCACCGTTTGGATCTACTTAT  
 GCTTTGGGAAGAATGGCCAGATGGGAAACCTTGGAAAGGAACTCATCTTGGTTCAGTTCATCCAGT  
 AGTGGCTCGGATGATCTACGAGATGTTTTCTGGTGATTTACACAGATCCTTTGATAGTGGCAGTGTCCGC  
 CTGCAGATCTCAACCCAGACATCAAGGATAACATCGTTGCTCAGCTGAAGCAGCTGTACCGCATCCTTC  
 AAACCCAGGAGAGCTGGCAGCCATGCAGCCACCCCCAGCATGCAACTGCCCTGCCCTGCCCTCCCA  
 G

**ACGCGT**ACGCGGCCGCTCGAGCAGAAACTCATCTCAGAAGAGGATCTGGCAGCAAATGATATCCTGGATT  
 ACAAGGATGACGACGATAAGGTTTAA

**Protein Sequence:**

>RC201579 protein sequence  
 Red=Cloning site Green=Tags(s)

MALHPRRVRLKPWLVAQVDSGLYPGLIWLHRDSKRFQIPWKHATRHSPQQEEENTIFKAWAVETGKYQEG  
 VDDPDPKWKQAQLRCALNKSREFNLMYDGTKEVPMNPVKIYQVCDIPQPQGSIIINPGSTGSAPWDEKDN  
 VDEEDEDELDSQHHPV IQDTFPFLNINGSMPAPASVGNCSVGNCSPEAVWPKTEPLEMEVPQAPIQPF  
 YSSPELWISSLPMTDLDIKFQYRGKEYGQTMVSNPQGCRIFYGDLGPMPDQEELFGPVSLEQVKFPGPE  
 HITNEKQKLFSTKLLDVMDRGLILEVSGHAIYAIRLCQCKVYWSGPCAPSLVAPNLIERQKVKLFCLET  
 FLSDLIAHQKQIEKQPPFEIYLCFGEWPDGKPLERKILVQVIPVARMYEMFSGDFTRSFDSGSRV  
 LQISTPDIKDNIVAQLKQLYRILQTTQESWQPMQPTPSMQLPPALPPQ

**TR**TRPLEQKLISEEDLAANDILDYKDDDDKV

**Chromatograms:**

[https://cdn.origene.com/chromatograms/mk6139\\_d09.zip](https://cdn.origene.com/chromatograms/mk6139_d09.zip)

**Restriction Sites:**

Sgfl-Mlul

**Cloning Scheme:**


**ACCN:** NM\_006147

**ORF Size:** 1401 bp

**OTI Disclaimer:** Due to the inherent nature of this plasmid, standard methods to replicate additional amounts of DNA in E. coli are highly likely to result in mutations and/or rearrangements. Therefore, OriGene does not guarantee the capability to replicate this plasmid DNA. Additional amounts of DNA can be purchased from OriGene with batch-specific, full-sequence verification at a reduced cost. Please contact our customer care team at [custsupport@origene.com](mailto:custsupport@origene.com) or by calling 301.340.3188 option 3 for pricing and delivery.

The molecular sequence of this clone aligns with the gene accession number as a point of reference only. However, individual transcript sequences of the same gene can differ through naturally occurring variations (e.g. polymorphisms), each with its own valid existence. This clone is substantially in agreement with the reference, but a complete review of all prevailing variants is recommended prior to use. [More info](#)

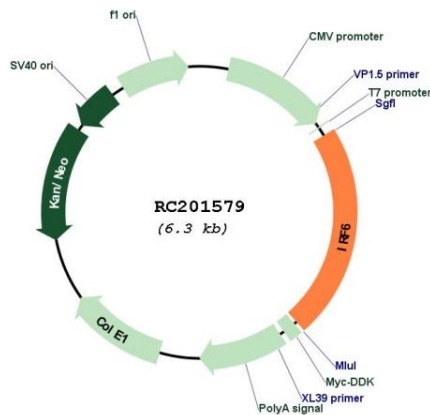
**OTI Annotation:** This clone was engineered to express the complete ORF with an expression tag. Expression varies depending on the nature of the gene.

**Components:** The ORF clone is ion-exchange column purified and shipped in a 2D barcoded Matrix tube containing 10ug of transfection-ready, dried plasmid DNA (reconstitute with 100 ul of water).

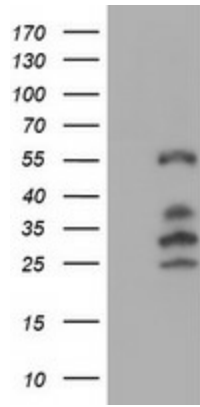
- Reconstitution Method:**
1. Centrifuge at 5,000xg for 5min.
  2. Carefully open the tube and add 100ul of sterile water to dissolve the DNA.
  3. Close the tube and incubate for 10 minutes at room temperature.
  4. Briefly vortex the tube and then do a quick spin (less than 5000xg) to concentrate the liquid at the bottom.
  5. Store the suspended plasmid at -20°C. The DNA is stable for at least one year from date of shipping when stored at -20°C.

<b>Note:</b>	Plasmids are not sterile. For experiments where strict sterility is required, filtration with 0.22um filter is required.
<b>RefSeq:</b>	<a href="#">NM_006147.4</a>
<b>RefSeq Size:</b>	4505 bp
<b>RefSeq ORF:</b>	1404 bp
<b>Locus ID:</b>	3664
<b>UniProt ID:</b>	<a href="#">O14896</a>
<b>Cytogenetics:</b>	1q32.2
<b>Domains:</b>	IRF
<b>Protein Families:</b>	ES Cell Differentiation/IPS, Transcription Factors
<b>MW:</b>	53.1 kDa
<b>Gene Summary:</b>	This gene encodes a member of the interferon regulatory transcription factor (IRF) family. Family members share a highly-conserved N-terminal helix-turn-helix DNA-binding domain and a less conserved C-terminal protein-binding domain. The encoded protein may be a transcriptional activator. Mutations in this gene can cause van der Woude syndrome and popliteal pterygium syndrome. Mutations in this gene are also associated with non-syndromic orofacial cleft type 6. Alternate splicing results in multiple transcript variants.[provided by RefSeq, May 2011]

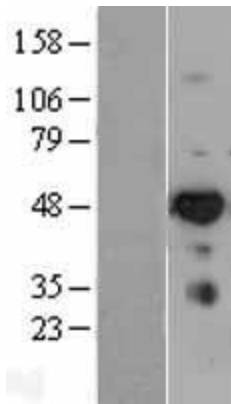
### Product images:



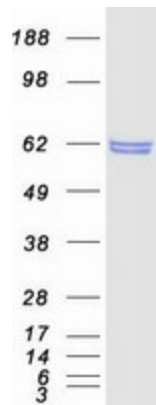
Circular map for RC201579



HEK293T cells were transfected with the pCMV6-ENTRY control (Cat# [PS100001], Left lane) or pCMV6-ENTRY IRF6 (Cat# RC201579, Right lane) cDNA for 48 hrs and lysed. Equivalent amounts of cell lysates (5 ug per lane) were separated by SDS-PAGE and immunoblotted with anti-IRF6 (Cat# [TA503159]). Positive lysates [LY401852] (100ug) and [LC401852] (20ug) can be purchased separately from OriGene.



Western blot validation of overexpression lysate (Cat# [LY401852]) using anti-DDK antibody (Cat# [TA50011-100]). Left: Cell lysates from untransfected HEK293T cells; Right: Cell lysates from HEK293T cells transfected with RC201579 using transfection reagent MegaTran 2.0 (Cat# [TT210002]).



Coomassie blue staining of purified IRF6 protein (Cat# [TP301579]). The protein was produced from HEK293T cells transfected with IRF6 cDNA clone (Cat# RC201579) using MegaTran 2.0 (Cat# [TT210002]).