

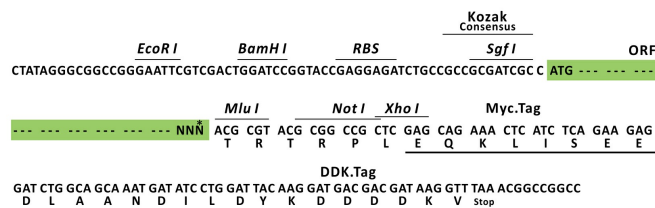
Product datasheet for RC201576L1

RAD1 (NM_133377) Human Tagged Lenti ORF Clone

Product data:

Product Type:	Expression Plasmids
Product Name:	RAD1 (NM_133377) Human Tagged Lenti ORF Clone
Tag:	Myc-DDK
Symbol:	RAD1
Synonyms:	cell cycle checkpoint protein Hrad1; checkpoint control protein HRAD1; DNA repair exonuclease REC1; exonuclease homolog RAD1; HRAD1; OTTHUMP00000115992; RAD1 homolog; RAD1 homolog (S. pombe); Rad1-like DNA damage checkpoint; REC1; REC1, HRAD1
Mammalian Cell Selection:	None
Vector:	pLenti-C-Myc-DDK (PS100064)
E. coli Selection:	Chloramphenicol (34 ug/mL)
ORF Nucleotide Sequence:	The ORF insert of this clone is exactly the same as(RC201576).
Restriction Sites:	SgfI-MluI
Cloning Scheme:	

Cloning sites used for ORF Shuttling:



* The last codon before the Stop codon of the ORF.

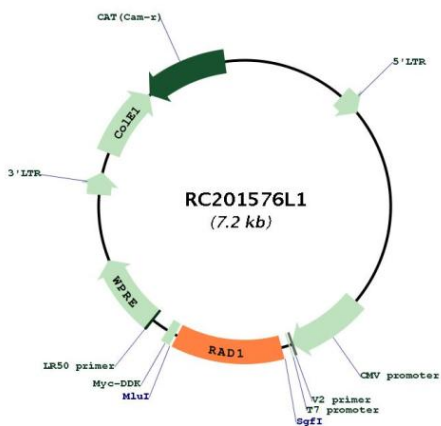
ACCN: NM_133377



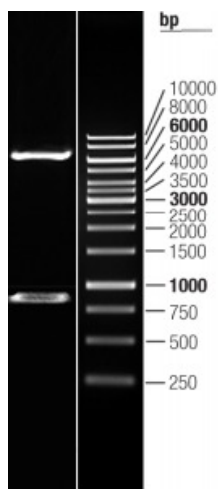
[View online >](#)

ORF Size:	846 bp
OTI Disclaimer:	The molecular sequence of this clone aligns with the gene accession number as a point of reference only. However, individual transcript sequences of the same gene can differ through naturally occurring variations (e.g. polymorphisms), each with its own valid existence. This clone is substantially in agreement with the reference, but a complete review of all prevailing variants is recommended prior to use. More info
OTI Annotation:	This clone was engineered to express the complete ORF with an expression tag. Expression varies depending on the nature of the gene.
Components:	The ORF clone is ion-exchange column purified and shipped in a 2D barcoded Matrix tube containing 10ug of transfection-ready, dried plasmid DNA (reconstitute with 100 ul of water).
Reconstitution Method:	<ol style="list-style-type: none">1. Centrifuge at 5,000xg for 5min.2. Carefully open the tube and add 100ul of sterile water to dissolve the DNA.3. Close the tube and incubate for 10 minutes at room temperature.4. Briefly vortex the tube and then do a quick spin (less than 5000xg) to concentrate the liquid at the bottom.5. Store the suspended plasmid at -20°C. The DNA is stable for at least one year from date of shipping when stored at -20°C.
RefSeq:	NM_133377.2 , NP_596868.1
RefSeq Size:	4765 bp
RefSeq ORF:	848 bp
Locus ID:	5810
Cytogenetics:	5p13.2
Domains:	Rad1
Protein Families:	Druggable Genome
MW:	31.8 kDa
Gene Summary:	This gene encodes a component of a heterotrimeric cell cycle checkpoint complex, known as the 9-1-1 complex, that is activated to stop cell cycle progression in response to DNA damage or incomplete DNA replication. The 9-1-1 complex is recruited by RAD17 to affected sites where it may attract specialized DNA polymerases and other DNA repair effectors. Alternatively spliced transcript variants of this gene have been described. [provided by RefSeq, Jan 2009]

Product images:



Circular map for RC201576L1



Double digestion of RC201576L1 using SgfI and MluI