

Product datasheet for RC201575

PRSS23 (NM_007173) Human Tagged ORF Clone

Product data:

| | |
|---------------------------|---|
| Product Type: | Expression Plasmids |
| Product Name: | PRSS23 (NM_007173) Human Tagged ORF Clone |
| Tag: | Myc-DDK |
| Symbol: | PRSS23 |
| Synonyms: | SIG13; SPUVE; ZSIG13 |
| Mammalian Cell Selection: | Neomycin |
| Vector: | pCMV6-Entry (PS100001) |
| E. coli Selection: | Kanamycin (25 ug/mL) |
| ORF Nucleotide Sequence: | >RC201575 ORF sequence Red=Cloning site Blue=ORF Green=Tags(s) |

TTTTGTAATACGACTCACTATAGGGCGGCCGGAATTCGTCGACTGGATCCGGTACCGAGGAGATCTGCC
GCC**CGATCGC**C

ATGGCAGGGATTCCAGGGCTCCTCTTCTCTCTTTCTGCTCTGTGCTGTTGGGCAAGTGAGCCCTT
ACAGTGCCCCCTGGAAACCCACTTGGCCTGCATACCGCTCCCTGTCGTCTTGCCCCAGTCTACCCTCAA
TTTAGCCAAGCCAGACTTTGGAGCCGAAGCCAAATAGAAGTATCTTCTTCATGTGGACCCAGTGCAT
AAGGGAATCCACTGCCACTTACGAAGAGGCCAAGCAATATCTGTCTTATGAAACGCTCTATGCCAATG
GCAGCCGCACAGAGACGCAGGTGGGCATCTACATCCTCAGCAGTAGTGGAGATGGGGCCCAACCCGAGA
CTCAGGGTCTTCAGGAAAGTCTCGAAGGAAGCGGCAGATTTATGGCTATGACAGCAGGTTACGATTTTT
GGGAAGGACTTCCTGCTCAACTACCCTTCTCAACATCAGTGAAGTTATCCACGGGCTGCACCGCACCC
TGGTGGCAGAGAAGCATGTCCTCACAGCTGCCACTGCATACAGATGGAAAAACCTATGTGAAAGGAAC
CCAGAAGCTTCGAGTGGGCTTCTAAAGCCCAAGTTTAAAGATGGTGGTCGAGGGGCCAACGACTCCACT
TCAGCCATGCCCGAGCAGATGAAATTCAGTGGATCCGGGTGAAACGCACCCATGTGCCAAGGGTTGGA
TCAAGGCAATGCCAATGACATCGGCATGGATTATGATTATGCCCTCCTGGAACCAAAAAGCCCCACAA
GAGAAAAATTTAAGATTGGGGTGAGCCCTCTGCTAAGCAGCTGCCAGGGGCCAGAATCACTTCTCT
GGTTATGACAATGACCGACCGCAATTTGGTGTATCGCTTCTGTGACGTCAAAGACGAGACCTATGACT
TGCTTACCAGCAATGCGATGCCAGCCAGGGGCCAGCGGTCTGGGGTCTATGTGAGGATGTGGAAGAG
ACAGCAGCAGAAGTGGGAGCGAAAAATTATTGGCATTTTTTCAGGGCACCAAGTGGGTGGACATGAATGGT
TCCCCACAGGATTTCAACGTGGCTGTCAGAATCACTCCTCTCAAATATGCCCAGATTTGCTATTGGATTA
AAGGAACTACCTGGATTGTAGGGAGGG

ACGCGTACGCGGCCGCTCGAGCAGAACTCATCTCAGAAGAGGATCTGGCAGCAATGATATCCTGGATT
ACAAGGATGACGACGATAAGGTTTAA



[View online »](#)

Protein Sequence: >RC201575 protein sequence
 Red=Cloning site Green=Tags(s)

MAGIPGLLFLFFLLCAVGQVSPYSAPWKPTWPAYRLPVVLPQSTLNLAKPDFGAEAKLEVSSSCGPQCH
 KGTPLPITYEEAKQYLSYETLYANGSRTETQVGIYILSSSGDGAQHRDSGSSGKSRKRQIYGYDSRFSIF
 GKDFLLNYPFSTSVKLSGTCTGLVAEKHVL TAAHCIHDGKTYVKGTKQLRVGFLKPKFKDGGRGANDST
 SAMPEQMKFQWIRVKRTHVPKGIWIKGNANDIGMDYDYLLELKKPHKRKFMKIGVSPPAKQLPGGRIHFS
 GYDNDRPGNLVYRFCDVKDETYDLLYQQCDAQPGASGSGVYVRMWRKQQKWERKIIIGIFSGHQWVDMNG
 SPQDFNVAVRITPLKYAQICYWIKGNLYLDCREG

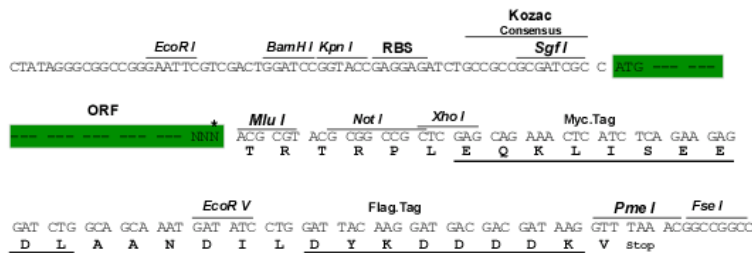
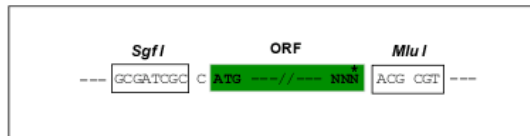
TRTRPLEQKLISEEDLAANDILDYKDDDDKV

Chromatograms: https://cdn.origene.com/chromatograms/mk6018_f10.zip

Restriction Sites: SgfI-MluI

Cloning Scheme:

Cloning sites used for ORF Shuttling:



* The last codon before the Stop codon of the ORF

ACCN: NM_007173

ORF Size: 1149 bp

OTI Disclaimer: The molecular sequence of this clone aligns with the gene accession number as a point of reference only. However, individual transcript sequences of the same gene can differ through naturally occurring variations (e.g. polymorphisms), each with its own valid existence. This clone is substantially in agreement with the reference, but a complete review of all prevailing variants is recommended prior to use. [More info](#)

OTI Annotation: This clone was engineered to express the complete ORF with an expression tag. Expression varies depending on the nature of the gene.

Components: The ORF clone is ion-exchange column purified and shipped in a 2D barcoded Matrix tube containing 10ug of transfection-ready, dried plasmid DNA (reconstitute with 100 ul of water).

Reconstitution Method:

1. Centrifuge at 5,000xg for 5min.
2. Carefully open the tube and add 100ul of sterile water to dissolve the DNA.
3. Close the tube and incubate for 10 minutes at room temperature.
4. Briefly vortex the tube and then do a quick spin (less than 5000xg) to concentrate the liquid at the bottom.
5. Store the suspended plasmid at -20°C. The DNA is stable for at least one year from date of shipping when stored at -20°C.

RefSeq: [NM_007173.6](#)

RefSeq Size: 4015 bp

RefSeq ORF: 1152 bp

Locus ID: 11098

UniProt ID: [O95084](#)

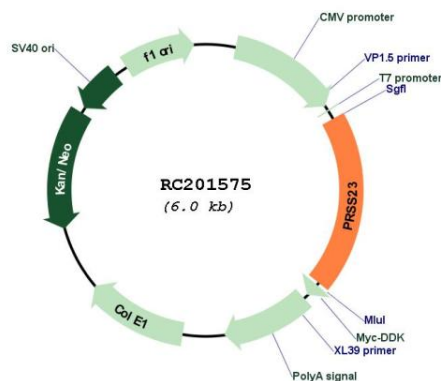
Cytogenetics: 11q14.2

Protein Families: Druggable Genome, Protease, Secreted Protein

MW: 43 kDa

Gene Summary: This gene encodes a conserved member of the trypsin family of serine proteases. Mouse studies found a decrease of mRNA levels of this gene after ovulation was induced. Alternative splicing results in multiple transcript variants. [provided by RefSeq, Jun 2014]

Product images:



Circular map for RC201575