

## Product datasheet for RC201573L3

### PFKFB4 (NM\_004567) Human Tagged Lenti ORF Clone

#### Product data:

Product Type:	Expression Plasmids
Product Name:	PFKFB4 (NM_004567) Human Tagged Lenti ORF Clone
Tag:	Myc-DDK
Symbol:	PFKFB4
Mammalian Cell Selection:	Puromycin
Vector:	pLenti-C-Myc-DDK-P2A-Puro (PS100092)
E. coli Selection:	Chloramphenicol (34 ug/mL)
ORF Nucleotide Sequence:	The ORF insert of this clone is exactly the same as(RC201573).
Restriction Sites:	Sgfl-MluI
Cloning Scheme:	

Cloning sites used for ORF Shuttling:



\* The last codon before the Stop codon of the ORF.

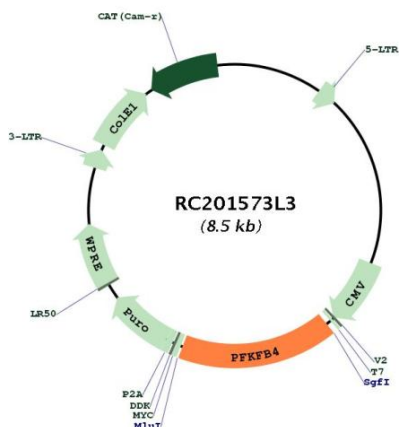
ACCN:	NM_004567
ORF Size:	1407 bp



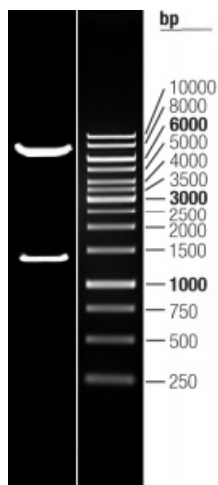
[View online »](#)

<b>OTI Disclaimer:</b>	The molecular sequence of this clone aligns with the gene accession number as a point of reference only. However, individual transcript sequences of the same gene can differ through naturally occurring variations (e.g. polymorphisms), each with its own valid existence. This clone is substantially in agreement with the reference, but a complete review of all prevailing variants is recommended prior to use. <a href="#">More info</a>
<b>OTI Annotation:</b>	This clone was engineered to express the complete ORF with an expression tag. Expression varies depending on the nature of the gene.
<b>Components:</b>	The ORF clone is ion-exchange column purified and shipped in a 2D barcoded Matrix tube containing 10ug of transfection-ready, dried plasmid DNA (reconstitute with 100 ul of water).
<b>Reconstitution Method:</b>	<ol style="list-style-type: none"><li>1. Centrifuge at 5,000xg for 5min.</li><li>2. Carefully open the tube and add 100ul of sterile water to dissolve the DNA.</li><li>3. Close the tube and incubate for 10 minutes at room temperature.</li><li>4. Briefly vortex the tube and then do a quick spin (less than 5000xg) to concentrate the liquid at the bottom.</li><li>5. Store the suspended plasmid at -20°C. The DNA is stable for at least one year from date of shipping when stored at -20°C.</li></ol>
<b>RefSeq:</b>	<a href="#">NM_004567.2</a>
<b>RefSeq Size:</b>	3503 bp
<b>RefSeq ORF:</b>	1410 bp
<b>Locus ID:</b>	5210
<b>UniProt ID:</b>	<a href="#">Q16877</a>
<b>Cytogenetics:</b>	3p21.31
<b>Domains:</b>	PGAM, 6PF2K
<b>Protein Families:</b>	Druggable Genome
<b>Protein Pathways:</b>	Fructose and mannose metabolism
<b>MW:</b>	54 kDa
<b>Gene Summary:</b>	The protein encoded by this gene is one of four bifunctional kinase/phosphatases that regulate the concentration of the glycolytic byproduct fructose-2,6-bisphosphate (F2,6BP). The encoded protein is highly expressed in cancer cells and is induced by hypoxia. This protein is essential to the survival of cancer cells under conditions of hypoxia, because it increases the amount of F2,6BP and ATP at a time when the cell cannot produce much of them. This finding suggests that this protein may be a good target for disruption in cancer cells, hopefully imperiling their survival. Several transcript variants encoding different isoforms have been found for this gene. [provided by RefSeq, Nov 2015]

Product images:



Circular map for RC201573L3



Double digestion of RC201573L3 using SgfI and MluI