

Product datasheet for **RC201569**

Annexin A1 (ANXA1) (NM_000700) Human Tagged ORF Clone

Product data:

Product Type:	Expression Plasmids
Product Name:	Annexin A1 (ANXA1) (NM_000700) Human Tagged ORF Clone
Tag:	Myc-DDK
Symbol:	Annexin A1
Synonyms:	ANX1; LPC1
Mammalian Cell Selection:	Neomycin
Vector:	pCMV6-Entry (PS100001)
E. coli Selection:	Kanamycin (25 ug/mL)
ORF Nucleotide Sequence:	>RC201569 ORF sequence Red=Cloning site Blue=ORF Green=Tags(s)

TTTTGTAATACGACTCACTATAGGGCGGCCGGAATTCGTCGACTGGATCCGGTACCGAGGAGATCTGCC
GCC**CGATCGCC**

ATGGCAATGGTATCAGAATTCCTCAAGCAGGCCTGGTTTATTGAAAATGAAGAGCAGGAATATGTTCAA
CTGTGAAGTCATCAAAGGTGGTCCCGGATCAGCGGTGAGCCCTATCCTACCTCAATCCATCCTCGGA
TGTCGCTGCCTTGATAAGGCCATAATGGTTAAAGGTGTGGATGAAGCAACCATCATTGACATTCTAACT
AAGCGAAACAATGCACAGCGTCAACAGATCAAAGCAGCATATCTCCAGGAAACAGGAAAGCCCTGGATG
AAACACTGAAGAAAGCCCTTACAGGTACCTTGAGGAGTTGTTTTAGCTCTGCTAAAACTCCAGCGCA
ATTTGATGCTGATGAACTTCGTGCTGCCATGAAGGCCTTGGAAGTATGATGAAGATACTCTAATTGAGATT
TTGGCATCAAGAACTAACAAGAAATCAGAGACATTAACAGGGTCTACAGAGAGGAACTGAAGAGAGATC
TGGCCAAAGACATAACCTCAGACACATCTGGAGATTTTCGGAACGCTTTGCTTTCTCTTGCTAAGGGTGA
CCGATCTGAGGACTTTGGTGTGAATGAAGACTTGGCTGATTGAGATGCCAGGGCCTTGATGAAGCAGGA
GAAAGGAGAAAGGGGACAGACGTAACGTGTTCAATACCATCCTTACCACCAGAAGCTATCCACAACCTC
GCAGAGTGTTCAGAAAACACCAAGTACAGTAAGCATGACATGAACAAAGTTCTGGACCTGGAGTTGAA
AGGTGACATTGAGAAATGCCTCACAGCTATCGTGAAGTGCGCCACAAGCAAACAGCTTTCTTTGCAGAG
AAGCTTCATCAAGCCATGAAAGGTGTTGGAAGTGCCTAAGGCATTGATCAGGATTATGGTTTCCCGTT
CTGAAATTGACATGAATGATATCAAAGCATTCTATCAGAAGATGTATGGTATCTCCCTTTGCCAAGCCAT
CCTGGATGAAACCAAAGGAGATTATGAGAAAATCCTGGTGGCTCTTTGTGGAGGAAAC

ACGCGTACGCGGCCGCTCGAGCAGAAACTCATCTCAGAAGAGGATCTGGCAGCAAATGATATCCTGGATT
ACAAGGATGACGACGATAAGGTTTAA



[View online »](#)

Protein Sequence: >RC201569 protein sequence
Red=Cloning site Green=Tags(s)

MAMVSEFLKQAWFIENEEQEYVQTVKSSKGGPGSAVSPYPTFNPSSDVAALHKAIMVKGVDEATIIDILT
 KRNNARQQIKAAYLQETGKPLDETLKKALTGHLEEVVLLALLKTPAQFDADELRAAMKGLGTDEDTLIEI
 LASRTNKEIRDINRVYREELKRDLAKDITSDTSGDFRNALLSLAKGDRSEDFGVNEDLADSDARALYEAG
 ERRKGTDVNVFNTILTTRSYPQLRRVFQKYTKYSKHDMNKVLDLELKGDIKCLTAIVKCATSKPAFFAE
 KLHQAMKGVGTRHKALIRIMVSRSEIDMNDIKAFYQKMYGISLCQAILDETKGDYKILVALCGGN

TRTRPLEQKLISEEDLAANDILDYKDDDDKV

Chromatograms: https://cdn.origene.com/chromatograms/mk6286_c11.zip

Restriction Sites: SgfI-MluI

Cloning Scheme:

Cloning sites used for ORF Shuttling:



* The last codon before the Stop codon of the ORF

ACCN: NM_000700

ORF Size: 1038 bp

OTI Disclaimer: The molecular sequence of this clone aligns with the gene accession number as a point of reference only. However, individual transcript sequences of the same gene can differ through naturally occurring variations (e.g. polymorphisms), each with its own valid existence. This clone is substantially in agreement with the reference, but a complete review of all prevailing variants is recommended prior to use. [More info](#)

OTI Annotation: This clone was engineered to express the complete ORF with an expression tag. Expression varies depending on the nature of the gene.

Components: The ORF clone is ion-exchange column purified and shipped in a 2D barcoded Matrix tube containing 10ug of transfection-ready, dried plasmid DNA (reconstitute with 100 ul of water).

Reconstitution Method:

1. Centrifuge at 5,000xg for 5min.
2. Carefully open the tube and add 100ul of sterile water to dissolve the DNA.
3. Close the tube and incubate for 10 minutes at room temperature.
4. Briefly vortex the tube and then do a quick spin (less than 5000xg) to concentrate the liquid at the bottom.
5. Store the suspended plasmid at -20°C. The DNA is stable for at least one year from date of shipping when stored at -20°C.

RefSeq: [NM_000700.3](#)

RefSeq Size: 1399 bp

RefSeq ORF: 1041 bp

Locus ID: 301

UniProt ID: [P04083](#)

Cytogenetics: 9q21.13

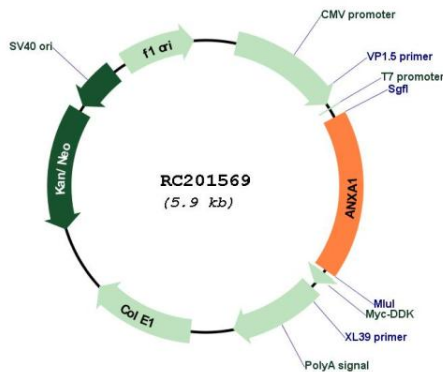
Domains: annexin

Protein Families: Druggable Genome

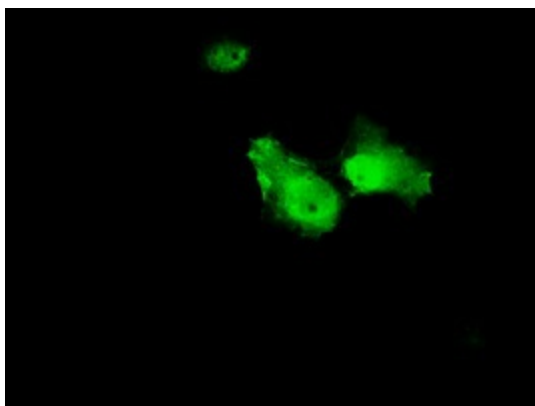
MW: 38.7 kDa

Gene Summary: This gene encodes a membrane-localized protein that binds phospholipids. This protein inhibits phospholipase A2 and has anti-inflammatory activity. Loss of function or expression of this gene has been detected in multiple tumors. [provided by RefSeq, Dec 2014]

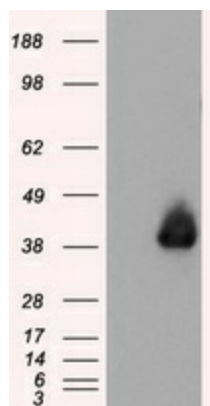
Product images:



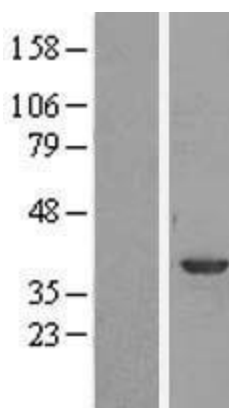
Circular map for RC201569



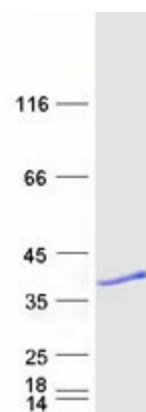
Anti-ANXA1 mouse monoclonal antibody ([TA500967]) immunofluorescent staining of COS7 cells transiently transfected by pCMV6-ENTRY ANXA1 (RC201569).



HEK293T cells were transfected with the pCMV6-ENTRY control (Cat# [PS100001], Left lane) or pCMV6-ENTRY ANXA1 (Cat# RC201569, Right lane) cDNA for 48 hrs and lysed. Equivalent amounts of cell lysates (5 ug per lane) were separated by SDS-PAGE and immunoblotted with anti-ANXA1 (Cat# [TA500967]). Positive lysates [LY424560] (100ug) and [LC424560] (20ug) can be purchased separately from OriGene.



Western blot validation of overexpression lysate (Cat# [LY424560]) using anti-DDK antibody (Cat# [TA50011-100]). Left: Cell lysates from untransfected HEK293T cells; Right: Cell lysates from HEK293T cells transfected with RC201569 using transfection reagent MegaTran 2.0 (Cat# [TT210002]).



Coomassie blue staining of purified ANXA1 protein (Cat# [TP301569]). The protein was produced from HEK293T cells transfected with ANXA1 cDNA clone (Cat# RC201569) using MegaTran 2.0 (Cat# [TT210002]).