

Product datasheet for RC201567

CEBP gamma (CEBPG) (NM_001806) Human Tagged ORF Clone

Product data:

Product Type:	Expression Plasmids
Product Name:	CEBP gamma (CEBPG) (NM_001806) Human Tagged ORF Clone
Tag:	Myc-DDK
Symbol:	CEBP gamma
Synonyms:	GPE1BP; IG/EBP-1
Mammalian Cell Selection:	Neomycin
Vector:	pCMV6-Entry (PS100001)
E. coli Selection:	Kanamycin (25 ug/mL)
ORF Nucleotide Sequence:	>RC201567 ORF sequence Red=Cloning site Blue=ORF Green=Tags(s)

TTTTGTAATACGACTCACTATAGGGCGGCCGGAATTCGTCGACTGGATCCGGTACCGAGGAGATCTGCC
 GCCCGCATCGCC

ATGAGCAAGATATCGCAGCAAAACAGCACTCCAGGGGTGAACGGAATTAGTGTTATCCATACCCAGGCAC
 ATGCCAGCGGCTTACAGCAGGTTCTCAGCTGGTGCCTGCTGGCCCTGGGGAGGAGGCAAAGCTGTGGC
 TCCCAGCAAGCAGAGCAAAAAGAGTTCGCCATGGATCGAAACAGTGACGAGTATCGGCAACGCCGAGAG
 AGGAACAACATGGCTGTAAAAAGAGCCGTTGAAAAGCAAGCAGAAAGCACAAGACACACTGCAGAGAG
 TCAATCAGCTCAAAGAAGAGAATGAACGGTTGGAAGCAAAAATCAAATTGCTGACCAAGGAATTAAGTGT
 ACTCAAAGATTTGTTTCTTGAGCATGCACACAACCTTGACAGCAACGTACAGTCCATTAGCACTGAAAAAT
 ACGACAGCAGATGGCGACAATGCAGGACAG

ACGCGTACGCGGCCGCTCGAGCAGAACTCATCTCAGAAGAGGATCTGGCAGCAAATGATATCCTGGATT
 ACAAGGATGACGACGATAAGGTTTAA

Protein Sequence:	>RC201567 protein sequence Red=Cloning site Green=Tags(s)
-------------------	--

MSKISQQNSTPGVNGISVIHTQAHASGLQQVPQLVPAGPGGGKAVAPSKQSKKSSPMDRNSDEYRQRRE
 RNNMAVKSRKSKQKAQDTLQRVNQLKEENERLEAKIKLLTKELSVLKDLFLEHAHNLDNVQSISTEN
 TTADGDNAGQ

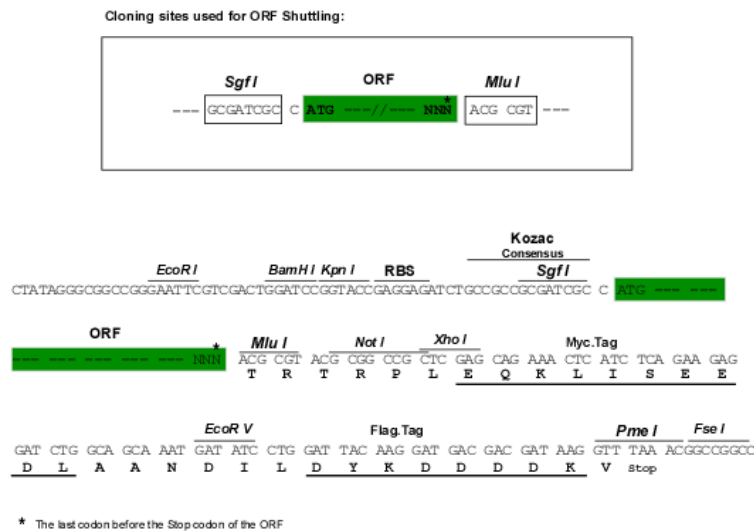
TRTRPLEQKLISEEDLAANDILDYKDDDDKV

Chromatograms:	https://cdn.origene.com/chromatograms/mk6074_b01.zip
----------------	---


[View online »](#)

Restriction Sites: SgfI-MluI

Cloning Scheme:



ACCN: NM_001806

ORF Size: 450 bp

OTI Disclaimer: Due to the inherent nature of this plasmid, standard methods to replicate additional amounts of DNA in E. coli are highly likely to result in mutations and/or rearrangements. Therefore, OriGene does not guarantee the capability to replicate this plasmid DNA. Additional amounts of DNA can be purchased from OriGene with batch-specific, full-sequence verification at a reduced cost. Please contact our customer care team at custsupport@origene.com or by calling 301.340.3188 option 3 for pricing and delivery.

The molecular sequence of this clone aligns with the gene accession number as a point of reference only. However, individual transcript sequences of the same gene can differ through naturally occurring variations (e.g. polymorphisms), each with its own valid existence. This clone is substantially in agreement with the reference, but a complete review of all prevailing variants is recommended prior to use. [More info](#)

OTI Annotation: This clone was engineered to express the complete ORF with an expression tag. Expression varies depending on the nature of the gene.

Components: The ORF clone is ion-exchange column purified and shipped in a 2D barcoded Matrix tube containing 10ug of transfection-ready, dried plasmid DNA (reconstitute with 100 ul of water).

Reconstitution Method:

1. Centrifuge at 5,000xg for 5min.
2. Carefully open the tube and add 100ul of sterile water to dissolve the DNA.
3. Close the tube and incubate for 10 minutes at room temperature.
4. Briefly vortex the tube and then do a quick spin (less than 5000xg) to concentrate the liquid at the bottom.
5. Store the suspended plasmid at -20°C. The DNA is stable for at least one year from date of shipping when stored at -20°C.

Note: Plasmids are not sterile. For experiments where strict sterility is required, filtration with 0.22um filter is required.

RefSeq: [NM_001806.4](#)

RefSeq Size: 3784 bp

RefSeq ORF: 453 bp

Locus ID: 1054

UniProt ID: [P53567](#)

Cytogenetics: 19q13.11

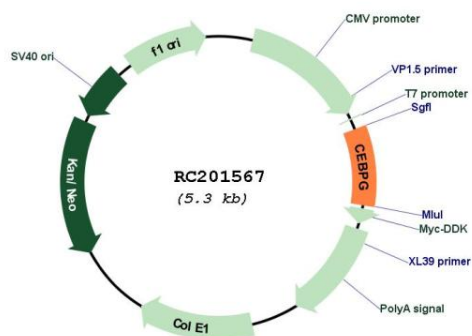
Domains: BRLZ

Protein Families: Druggable Genome, Transcription Factors

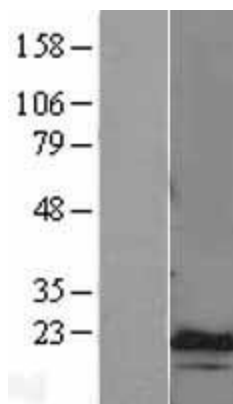
MW: 16.4 kDa

Gene Summary: The C/EBP family of transcription factors regulates viral and cellular CCAAT/enhancer element-mediated transcription. C/EBP proteins contain the bZIP region, which is characterized by two motifs in the C-terminal half of the protein: a basic region involved in DNA binding and a leucine zipper motif involved in dimerization. The C/EBP family consist of several related proteins, C/EBP alpha, C/EBP beta, C/EBP gamma, and C/EBP delta, that form homodimers and that form heterodimers with each other. CCAAT/enhancer binding protein gamma may cooperate with Fos to bind PRE-I enhancer elements. Two transcript variants encoding the same protein have been found for this gene. [provided by RefSeq, Nov 2011]

Product images:



Circular map for RC201567



Western blot validation of overexpression lysate (Cat# [LY400686]) using anti-DDK antibody (Cat# [TA50011-100]). Left: Cell lysates from untransfected HEK293T cells; Right: Cell lysates from HEK293T cells transfected with RC201567 using transfection reagent MegaTran 2.0 (Cat# [TT210002]).